

Datasheet for 000-001-498**Hus1B Peptide****Overview**

Description:	Hus1B Peptide - 000-001-498
Item No.:	000-001-498
Size:	50 µg
Applications:	WB
Origin:	Human

Product Details

Background:	Hus1B Control peptide is for use with Rabbit Anti-HUS1B antibody (p/n 600-401-498).
Synonyms:	HUS1B, Control Peptide, Blocking Peptide, checkpoint protein, Hus1B control peptide
Species of Origin:	Human
Type:	Peptide

Application Details

Tested Applications:	WB
Application Note:	Hus1B Control peptide has been tested in western blot and should be used with 1.0 µg peptide per 1.0 µg of affinity purified antibody per assay.
Assay Dilutions:	All assays should be optimized by the user. Recommended dilutions (if any) may be listed below.

Formulation

Physical State:	Liquid
Concentration:	1.0 mg/mL by dry weight
Buffer:	0.02 M Potassium Phosphate, 0.15 M Sodium Chloride, pH 7.2
Preservative:	None

Stabilizer: None

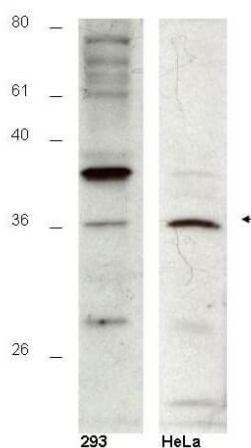
Shipping & Handling

Shipping Condition: Dry Ice

Storage Condition: Store vial at -20 °C prior to opening. Aliquot contents and freeze at -20 °C or below for extended storage. Avoid cycles of freezing and thawing. Centrifuge product if not completely clear after standing at room temperature. This product is stable for several weeks at 4 °C as an undiluted liquid. Dilute only prior to immediate use.

Expiration: Expiration date is six (6) months from date of receipt.

Images



Western Blot

Western blot using Rockland's affinity purified anti-Hus1B antibody shows detection of a 36kDa band corresponding to Hus1B in a HeLa cell lysate (p/n W09-000-364) (arrowhead). The staining pattern in 293 cells (p/n W09-000-365) is less clear, showing a predominant band at 39kDa. Personal Communication, A-Lien Lu-Chang, U. Maryland, Baltimore, MD

Disclaimer

This product is for research use only and is not intended for therapeutic or diagnostic applications. Please contact a technical service representative for more information. All products of animal origin manufactured by Rockland Immunochemicals are derived from starting materials of North American origin. Collection was performed in United States Department of Agriculture (USDA) inspected facilities and all materials have been inspected and certified to be free of disease and suitable for exportation. All properties listed are typical characteristics and are not specifications. All suggestions and data are offered in good faith but without guarantee as conditions and methods of use of our products are beyond our control. All claims must be made within 30 days following the date of delivery. The prospective user must determine the suitability of our materials before adopting them on a commercial scale. Suggested uses of our products are not recommendations to use our products in violation of any patent or as a license under any patent of Rockland Immunochemicals, Inc. If you require a commercial license to use this material and do not have one, then return this material, unopened to: Rockland Inc., P.O. BOX 5199, Limerick, Pennsylvania, USA.

