

Datasheet for 010-001-V27-1000**rMouse IL-2 Protein****Overview**

Description:	Mouse Interleukin-2 Recombinant Protein - 010-001-V27-1000
Item No.:	010-001-V27-1000
Size:	1 mg
Applications:	SDS-PAGE, Cellular Assay
Origin:	Mouse

Product Details

Background:	Interleukin-2 (IL-2) is an immuno-modulatory cytokine produced by stimulated T cells. IL-2 signals through the IL-2R receptor to induce proliferation of activated T cells. IL-2 also stimulates proliferation and differentiation of B cells, natural killer cells, monocytes and macrophages. Recombinant mouse IL-2 is a non-glycosylated protein, containing 149 amino acids, with a molecular weight of 17.2 kDa.
Synonyms:	T cell growth factor, TCGF, Aldesleukin
Species of Origin:	Mouse
Type:	Recombinant Protein
Low Endotoxin:	Yes

Target Details

Gene Name:	IL2
Purity/Specificity:	Interleukin-2 purity was determined to be greater than 98% as determined by HPLC, analysis by UV-Spectroscopy at 280nm, and by reducing and non-reducing SDS-pAGE.
Relevant Links:	<ul style="list-style-type: none">• UniProtKB - P04351

Application Details

Tested Applications:	SDS-PAGE
-----------------------------	----------

Suggested Applications:	Cellular Assay (Based on references)
Application Note:	Mouse Interleukin-2 Recombinant Protein has been tested by SDS-PAGE and biological activity and is suitable as a control for polyclonal or monoclonal anti-Mouse Interleukin-2 in immunological assays. Lyophilized in 0.01M sodium citrate, pH 4.0.
Assay Dilutions:	All assays should be optimized by the user. Recommended dilutions (if any) may be listed below.
Other:	Endotoxin Level: Measured by kinetic LAL analysis and is typically ≤ 1 EU/ μ g protein. Biologic Activity: The activity is determined by its ability to induce the proliferation of CTLL-2 cells and is typically 0.1-0.4 ng/mL.

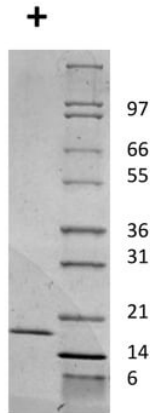
Formulation

Physical State:	Lyophilized
Buffer:	See application note.
Preservative:	None
Stabilizer:	None
Reconstitution Volume:	1.0 mL
Reconstitution Buffer:	Restore with deionized water (or equivalent)

Shipping & Handling

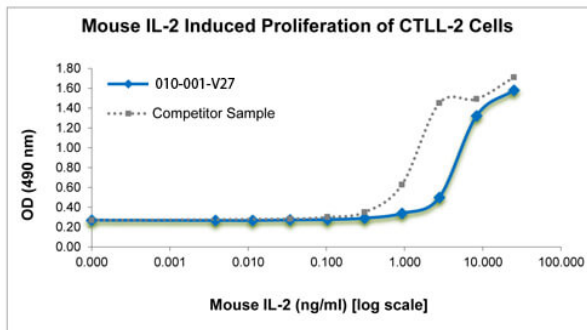
Shipping Condition:	Ambient
Storage Condition:	Store vial at -20° C prior to restoration. Dilute only prior to immediate use. Maintain sterility. This product DOES NOT contain preservative. DO NOT VORTEX. We recommend adding a carrier protein such as HSA or BSA to 0.1% (i.e. 1.0 mg/mL). For best results aliquot contents and freeze at -20° C or colder. Avoid cycles of freezing and thawing. Centrifuge vial before each opening to dislodge contents from the cap and to clarify if contents are not clear after standing at room temperature.
Expiration:	Expiration date is six (6) months from date of receipt.

Images



SDS-PAGE

SDS-PAGE of Mouse Interleukin-2 Recombinant Protein. Lane 1: 1 µg Mouse IL-2 in reducing conditions (+). Lane 2: Molecular weight marker. Mouse IL-2 has a predicted MW of 17.2 kDa.



SDS-PAGE

Bioactivity of Mouse Interleukin-2 Recombinant Protein. CTLL-2 cells were cultured with 0 to 25 ng/mL Mouse IL-2. Cell proliferation was measured after 66 hours and the linear portion of the curve was used to calculate the ED50. The ED50 of Mouse IL-2 is 3.9-5.9 ng/mL.

Disclaimer

This product is for research use only and is not intended for therapeutic or diagnostic applications. Please contact a technical service representative for more information. All products of animal origin manufactured by Rockland Immunochemicals are derived from starting materials of North American origin. Collection was performed in United States Department of Agriculture (USDA) inspected facilities and all materials have been inspected and certified to be free of disease and suitable for exportation. All properties listed are typical characteristics and are not specifications. All suggestions and data are offered in good faith but without guarantee as conditions and methods of use of our products are beyond our control. All claims must be made within 30 days following the date of delivery. The prospective user must determine the suitability of our materials before adopting them on a commercial scale. Suggested uses of our products are not recommendations to use our products in violation of any patent or as a license under any patent of Rockland Immunochemicals, Inc. If you require a commercial license to use this material and do not have one, then return this material, unopened to: Rockland Inc., P.O. BOX 5199, Limerick, Pennsylvania, USA.