

Datasheet for 010-2642

Mouse IgG2b isotype control Allophycocyanin

Overview

Description:	Mouse IgG2b Isotype Control Allophycocyanin Conjugated - 010-2642
Item No.:	010-2642
Size:	1 mg
Applications:	Dot Blot
Origin:	Mouse

Product Details

Background:	Mouse isotype controls are used in flow cytometry, western blot and ELISA and differentiate between immunoglobulin classes and subclasses. Isotype controls allow for the genetic variations or differences in the constant regions of the heavy and light chains. In mouse there are six relevant heavy chain isotypes and two light chain isotypes: heavy chain alpha - IgA, gamma - IgG 1, 2a, 2b, 3 and μ - IgM, light chain kappa and lambda.
Synonyms:	allophycocyanin conjugated Mouse Isotype control, APC control, mouse IgG2b subclass isotype control
Species of Origin:	Mouse
Conjugate:	Allophycocyanine (APC)
Clone ID:	M2B
Format:	IgG2b
Type:	Native Protein
F/P Ratio:	1-2

Target Details

Purity/Specificity:	Mouse Isotype control has been prepared from concentrated cell culture supernatant by immunoaffinity chromatography using protein A. Assay by immunoelectrophoresis resulted in a single precipitin arc against anti-Mouse IgG2b and anti-Mouse serum. Isotyping assay resulted the material is non-reactive with antisera to mouse IgG1, IgG2a, IgG3, IgM, and IgA. Allophycocyanin Conjugated Mouse IgG2b was proven by Dot Blot.
----------------------------	---

Application Details

Tested Applications:	Dot Blot
Application Note:	Mouse IgG2b kappa isotype control has been tested in dot blot and can be utilized as a control or standard reagent in Flow Cytometry, Western Blotting, and ELISA experiments where determination of sample isotype is important.
Assay Dilutions:	All assays should be optimized by the user. Recommended dilutions (if any) may be listed below.
ELISA:	1:2000 - 1:20,000
FC:	1:1000-1:5000
FLISA:	User Optimized
IF:	User Optimized

Formulation

Physical State:	Liquid (sterile filtered)
Concentration:	1.0 mg/mL by UV absorbance at 280 nm
Preservative:	0.01% (w/v) Sodium Azide
Stabilizer:	None

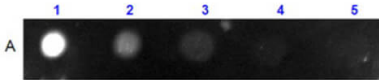
Shipping & Handling

Shipping Condition:	Wet Ice
Storage Condition:	Store vial at 4° C prior to opening. Dilute only prior to immediate use. This product is stable at 4° C as an undiluted liquid. Use subdued lighting during handling and incubation of cells prior to analysis. Store reagent in the dark. DO NOT FREEZE.
Expiration:	Expiration date is one (1) year from date of receipt.

Images

Dot Blot

Dot Blot Results of Mouse IgG2b Isotype Control
Allophycocyanin Conjugated. Mouse IgG2b isotype APC Conj
(1) 100ng, (2) 33.33ng, (3) 11.11ng, (4) 3.70ng, (5) 1.23ng.
Exposure: 1 second with DyLight 650 filter.

**Disclaimer**

This product is for research use only and is not intended for therapeutic or diagnostic applications. Please contact a technical service representative for more information. All products of animal origin manufactured by Rockland Immunochemicals are derived from starting materials of North American origin. Collection was performed in United States Department of Agriculture (USDA) inspected facilities and all materials have been inspected and certified to be free of disease and suitable for exportation. All properties listed are typical characteristics and are not specifications. All suggestions and data are offered in good faith but without guarantee as conditions and methods of use of our products are beyond our control. All claims must be made within 30 days following the date of delivery. The prospective user must determine the suitability of our materials before adopting them on a commercial scale. Suggested uses of our products are not recommendations to use our products in violation of any patent or as a license under any patent of Rockland Immunochemicals, Inc. If you require a commercial license to use this material and do not have one, then return this material, unopened to: Rockland Inc., P.O. BOX 5199, Limerick, Pennsylvania, USA.