

Datasheet for 100-4165N**NFkB p65 Antibody****Overview**

Description:	Anti-NFkB p65 (Rel A) N-TERMINAL SPECIFIC (RABBIT) Antibody - 100-4165N
Item No.:	100-4165N
Size:	100 µL
Applications:	WB
Reactivity:	Human
Host Species:	Rabbit

Product Details

Background:	Anti-NFkB p65 Antibody detects Nfkb p65. NFkB-p65 a subunit of NF-kappa-B transcription complex, which plays a crucial role in inflammatory and immune responses. The inhibitory effect of I-kappa-B upon NF-kappa-B in the cytoplasm is exerted primarily through the interaction with p65. P65 shows a weak DNA-binding site which could contribute directly to DNA binding in the NF-kappa-B complex. There are five NFkB proteins in mammals (RelA/NFkB-p65, RelB, c-Rel, NF- κ B1/NFkB-p105, and NF- κ B2/NFkB-p100). They form a variety of homodimers and heterodimers, each of which activates its own characteristic set of genes. Three splice-variant isoforms have been identified. Anti-NFkB p65 Antibody is ideal for investigators involved in Cell Signaling, Immunology, Cancer, and Signal Transduction research.
Synonyms:	rabbit Anti-NFkB p65 antibody, rabbit Anti-Rel A antibody, NFkB, nfkb, NF-kB, NF-kappaB, NFkappaB
Host Species:	Rabbit
Clonality:	Polyclonal
Format:	Antiserum

Target Details

Gene Name:	NFKB1
Reactivity:	Human
Immunogen Type:	Conjugated Peptide

Immunogen:	Anti-NFkB p65 Antibody was produced by repeated immunizations with a synthetic NFkB p65 peptide corresponding to a region near the N-terminus of the human protein conjugated to Keyhole Limpet Hemocyanin (KLH).
Purity/Specificity:	NFkB p65 Antibody was prepared from monospecific antiserum by delipidation and defibrination. Anti-NFkB p65 (N-terminal specific) may react non-specifically with other proteins.
Relevant Links:	<ul style="list-style-type: none">• NCBI - 223468676• UniProtKB - Q04206• GeneID - 5970

Application Details

Tested Applications:	WB
Application Note:	Anti-NFkB p65 (N-terminal specific) has been tested for the detection of human NFkB p65 (N-terminal specific) by immunoblot. Functionality in supershift assays has not been determined.
Assay Dilutions:	All assays should be optimized by the user. Recommended dilutions (if any) may be listed below.
ELISA:	1:5,000 - 1:25,000
WB:	1:5000 - 1:10,000

Formulation

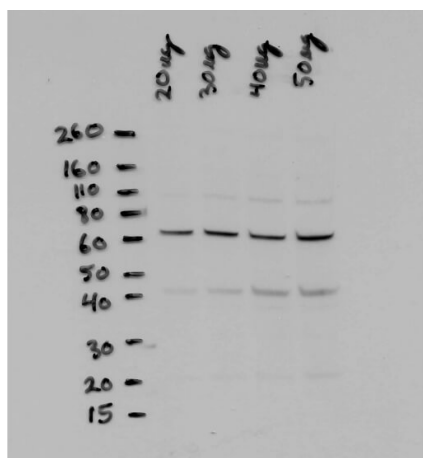
Physical State:	Liquid (sterile filtered)
Concentration:	82 mg/mL by Refractometry
Buffer:	None
Preservative:	0.01% (w/v) Sodium Azide
Stabilizer:	None

Shipping & Handling

Shipping Condition:	Dry Ice
Storage Condition:	Store vial at -20° C prior to opening. Aliquot contents and freeze at -20° C or below for extended storage. Avoid cycles of freezing and thawing. Centrifuge product if not completely clear after standing at room temperature. This product is stable for several weeks at 4° C as an undiluted liquid. Dilute only prior to immediate use.

Expiration: Expiration date is one (1) year from date of receipt.

Images



Western Blot

Western Blot of Rabbit anti-NFkB p65 N term antibody.
 Lane 1-4: PC3 cell lysate (p/n W09-001-GV6). Load: 20, 30, 40, and 50 ug per lane. Primary antibody: NFkB p65 antibody at 1:5000 for overnight at 4°C. Secondary antibody: HRP rabbit secondary antibody at 1:10,000 for 45 min at RT. Block: 5% BLOTTO overnight at 4°C. Predicted/Observed size: ~65kDa for NFkB p65. Other band(s): ~110kDa and ~45kDa.

Disclaimer

This product is for research use only and is not intended for therapeutic or diagnostic applications. Please contact a technical service representative for more information. All products of animal origin manufactured by Rockland Immunochemicals are derived from starting materials of North American origin. Collection was performed in United States Department of Agriculture (USDA) inspected facilities and all materials have been inspected and certified to be free of disease and suitable for exportation. All properties listed are typical characteristics and are not specifications. All suggestions and data are offered in good faith but without guarantee as conditions and methods of use of our products are beyond our control. All claims must be made within 30 days following the date of delivery. The prospective user must determine the suitability of our materials before adopting them on a commercial scale. Suggested uses of our products are not recommendations to use our products in violation of any patent or as a license under any patent of Rockland Immunochemicals, Inc. If you require a commercial license to use this material and do not have one, then return this material, unopened to: Rockland Inc., P.O. BOX 5199, Limerick, Pennsylvania, USA.