

Datasheet for 200-301-AG9**CD4 Antibody [8G1B12]****Overview**

Description:	Anti-CD4 (MOUSE) Antibody - 200-301-AG9
Item No.:	200-301-AG9
Size:	100 µg
Applications:	ELISA, IF, IHC, WB
Reactivity:	Human, Mouse, Rat
Host Species:	Mouse

Product Details

Background:	CD4 is a member of the immunoglobulin superfamily and is implicated as associative recognition element in MHC (Major Histocompatibility Complex) class II-restricted immune response. On T-lymphocytes, it defines the helper/inducer subset. The mature 55 kd CD4 protein consists of a 372 amino acid extracellular segment composed of four tandem immunoglobulin-like VJ regions. The CD4 molecule is a major receptor for human immunodeficiency virus (HIV), binding directly to the envelope glycoprotein gp120 on HIV, with the co-receptors being CCR5 or CXCR4. It has been shown that the V-like domains are critical for binding with HIV envelope gp120.
Synonyms:	CD4 Antibody [8G1B12] , CD4mut
Host Species:	Mouse
Clonality:	Monoclonal
Clone ID:	[8G1B12]
Format:	IgG1

Target Details

Gene Name:	CD4
Reactivity:	Human, Mouse, Rat
Immunogen Type:	Recombinant Protein
Immunogen:	Anti-Mouse monoclonal CD4 antibody was produced by repeated immunizations in mice with a 193 amino acid recombinant protein from near the N-terminus of human CD4.

Purity/Specificity: Anti-CD4 Monoclonal Antibody was Protein A purified. Cross reactivity with CD4 [8G1B12] from other sources has not been determined.

Relevant Links:

- [UniProtKB - P01730](#)
- [GeneID - 920](#)
- [NCBI - NP_000607](#)

Application Details

Tested Applications: ELISA, IF, IHC, WB

Application Note: Anti-CD4 Antibody has been tested for use in ELISA, immunohistochemistry, Immunofluorescence, and Western Blotting. Specific conditions for reactivity should be optimized by the end user. Expect a band at approximately 51 kDa in Western Blots of specific cell lysates and tissues. WB validated in rat samples, IHC/IF validated in human samples. All other applications and species not yet tested.

Assay Dilutions: All assays should be optimized by the user. Recommended dilutions (if any) may be listed below.

ELISA: 1:500 - 1:10,000

IF: User Optimized

IHC: 5µg/mL

WB: 0.5-1 µg/mL

Formulation

Physical State: Liquid (sterile filtered)

Concentration: 1 mg/mL by UV absorbance at 280 nm

Buffer: 0.01 M Sodium Phosphate, 0.25 M Sodium Chloride, pH 7.2

Preservative: 0.02% (w/v) Sodium Azide

Stabilizer: None

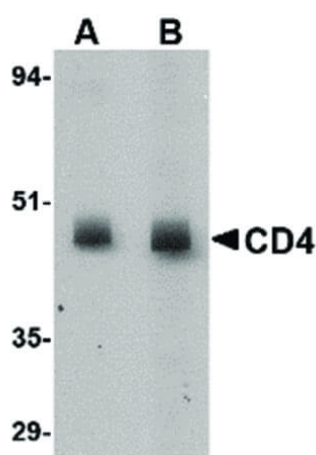
Shipping & Handling

Shipping Condition: Dry Ice

Storage Condition: Store vial at -20° C prior to opening. Aliquot contents and freeze at -20° C or below for extended storage. Avoid cycles of freezing and thawing. Centrifuge product if not completely clear after standing at room temperature. This product is stable for several weeks at 4° C as an undiluted liquid. Dilute only prior to immediate use.

Expiration: Expiration date is one (1) year from date of receipt.

Images



Western Blot

Western Blot of Mouse anti-CD4 antibody. Lane A: rat lung tissue lysate at 0.5 µg/mL. Lane B: rat lung tissue lysate at 1 µg/mL. Primary antibody: CD4 antibody overnight at 4°C. Secondary antibody: Mouse HRP secondary antibody. Block: 5% BLOTTO. Predicted/Observed size: 51 kDa, 49 kDa for CD4.

Disclaimer

This product is for research use only and is not intended for therapeutic or diagnostic applications. Please contact a technical service representative for more information. All products of animal origin manufactured by Rockland Immunochemicals are derived from starting materials of North American origin. Collection was performed in United States Department of Agriculture (USDA) inspected facilities and all materials have been inspected and certified to be free of disease and suitable for exportation. All properties listed are typical characteristics and are not specifications. All suggestions and data are offered in good faith but without guarantee as conditions and methods of use of our products are beyond our control. All claims must be made within 30 days following the date of delivery. The prospective user must determine the suitability of our materials before adopting them on a commercial scale. Suggested uses of our products are not recommendations to use our products in violation of any patent or as a license under any patent of Rockland Immunochemicals, Inc. If you require a commercial license to use this material and do not have one, then return this material, unopened to: Rockland Inc., P.O. BOX 5199, Limerick, Pennsylvania, USA.