

Datasheet for 200-301-F04**CASPR2 Antibody****Overview**

Description:	Anti-CASPR2 (MOUSE) Monoclonal Antibody - 200-301-F04
Item No.:	200-301-F04
Size:	100 µg
Applications:	IHC, WB
Reactivity:	Human, Mouse, Rat
Host Species:	Mouse

Product Details

Background:	Caspr (contactin-associated protein) is a part of the neurexin family. It lies in the paranodal section of the myelin sheath. It's role is for myelin sheath attachment along with contactin in a cis-complex (3). Caspr and Caspr2 regulate the formation of distinct axonal domains around the nodes of Ranvier. Caspr is required for the generation of a membrane barrier at the paranodal junction, whereas Caspr serves as a membrane scaffold that clusters Kv1 channels at the juxtaparanodal region. Both interact with protein 4.1B.
Synonyms:	Cntnap2, CNTP2, Contactin associated protein like 2, Cell recognition molecule Caspr2, CASPR2, KIAA0868
Host Species:	Mouse
Clonality:	Monoclonal
Clone ID:	S67-25
Format:	IgG2a

Target Details

Gene Name:	CNTNAP2
Reactivity:	Human, Mouse, Rat
Immunogen Type:	Recombinant Protein
Immunogen:	CASPR2 Antibody was produced in mice by repeated immunizations with a fusion protein (extracellular domain) of human CASPR2.

Purity/Specificity: Anti-CASPR2 Antibody was purified by Protein G chromatography. A BLAST analysis was used to suggest cross-reactivity with CASPR2 from Mouse, Human, and Rat based on 100% homology with the immunizing sequence. No cross reactivity to CASPR/Paranodin. Cross-reactivity with CASPR2 from other sources has not been determined. Scaffolds research.

Relevant Links:

- [NCBI - NP_054860.1](#)
- [GeneID - 26047](#)
- [UniProtKB - Q9UHC6](#)

Application Details

Tested Applications:	IHC, WB
Application Note:	Anti-CASPR2 Antibody is tested in WB, IP, and IHC. Expect a band approximately ~180kDa on specific lysates. Specific conditions for reactivity should be optimized by the end user.
Assay Dilutions:	All assays should be optimized by the user. Recommended dilutions (if any) may be listed below.
IF:	1.0-10ug/mL
IHC:	0.1-1.0ug/mL
IP:	User Optimized
WB:	1ug/mL

Formulation

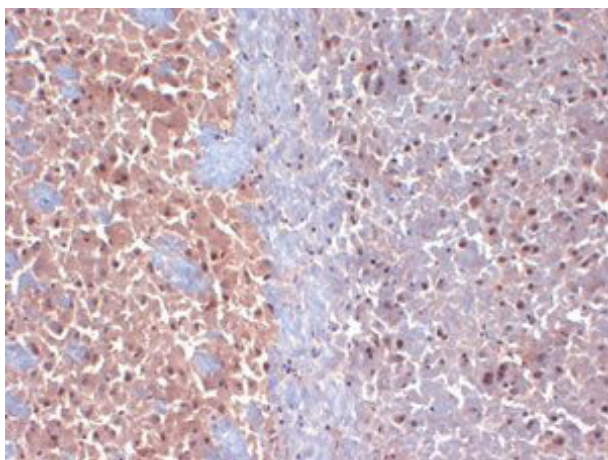
Physical State:	Liquid (sterile filtered)
Concentration:	1.0 mg/ml by UV absorbance at 280 nm
Buffer:	1X PBS, pH 7.4
Preservative:	0.09% (w/v) Sodium Azide
Stabilizer:	50% (v/v) Glycerol

Shipping & Handling

Shipping Condition:	Dry Ice
Storage Condition:	Store vial at -20° C prior to opening. Aliquot contents and freeze at -20° C or below for extended storage. Avoid cycles of freezing and thawing. Centrifuge product if not completely clear after standing at room temperature. This product is stable for several weeks at 4° C as an undiluted liquid. Dilute only prior to immediate use.

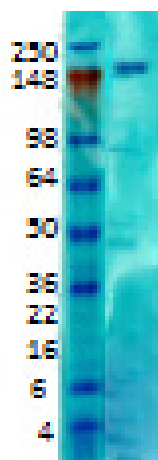
Expiration: Expiration date is one (1) year from date of receipt.

Images



Immunohistochemistry

Immunohistochemistry of Mouse anti-CASPR2 antibody.
 Tissue: mouse brain extract. Fixation: Frozen. Primary
 Antibody: anti-CASPR2 antibody at 1ug/ml for 1h at RT.
 Secondary antibody: Peroxidase mouse secondary at
 1:10,000 for 45 min at RT. Localization: Membrane.
 Staining: CASPR2 as precipitated brown signal.



Western Blot

Western Blot of mouse anti-CASPR2 antibody. Lane 1: Rat
 brain membrane tissues. Load: 10ug. Primary antibody:
 CASPR2 at 1:1000 overnight at 4°C. Secondary antibody:
 Goat anti-mouse IgG HRP at 1:40,000 for 45 min at RT.
 Blocked: 5% Blotto overnight at 4°C. Predicated/observed
 size: 148kDa, 180 kDa for CASPR2.

Disclaimer

This product is for research use only and is not intended for therapeutic or diagnostic applications. Please contact a technical service representative for more information. All products of animal origin manufactured by Rockland Immunochemicals are derived from starting materials of North American origin. Collection was performed in United States Department of Agriculture (USDA) inspected facilities and all materials have been inspected and certified to be free of disease and suitable for exportation. All properties listed are typical characteristics and are not specifications. All suggestions and data are offered in good faith but without guarantee as conditions and methods of use of our products are beyond our control. All claims must be made within 30 days following the date of delivery. The prospective user must determine the suitability of our materials before adopting them on a commercial scale. Suggested uses of our products are not recommendations to use our products in violation of any patent or as a license under any patent of Rockland Immunochemicals, Inc. If you require a commercial license to use this material and do not have one, then return this material, unopened to: Rockland Inc., P.O. BOX 5199, Limerick, Pennsylvania, USA.