

Datasheet for 200-301-G45**SHANK3 Antibody****Overview**

Description:	Anti-SHANK3 (MOUSE) Monoclonal Antibody - 200-301-G45
Item No.:	200-301-G45
Size:	100 µg
Applications:	IF, IHC, IP, WB
Reactivity:	Human, Mouse, Rat
Host Species:	Mouse

Product Details

Background:	Shank proteins make up a family of scaffold proteins identified through their interaction with a variety of membrane and cytoplasmic proteins. Shank proteins at postsynaptic sites of excitatory synapses play roles in signal transmission into the postsynaptic neuron. Shank proteins are also crucial in receptor tyrosine kinase signaling; specifically, Shank3 can mediate Erk-MAPK and P13K signaling which is crucial for tubule formation. Shank3 is also one of the latest genes to be associated with autism. A mutation of a single copy of Shank3 on chromosome 22q13 can result in language and/or social communication disorders.
Synonyms:	Shank3, Prosap2, SH3 and multiple ankyrin repeat domains protein 3, Proline-rich synapse-associated protein 2
Host Species:	Mouse
Clonality:	Monoclonal
Clone ID:	S69
Format:	IgG2b

Target Details

Gene Name:	Shank3
Reactivity:	Human, Mouse, Rat
Immunogen Type:	Conjugated Peptide

Immunogen:	SHANK3 Antibody was produced in mice by repeated immunizations raised against a synthetic peptide corresponding to an internal region of rat Shank3.
Purity/Specificity:	Anti-SHANK3 Antibody was purified by Protein G chromatography. A BLAST analysis was used to suggest cross-reactivity with SHANK3 from human, mouse, and rat based on 100% homology with the immunizing sequence. No cross-reactivity against Shank1 or Shank2. Cross-reactivity with SHANK3 from other sources has not been determined. Scaffolds research.
Relevant Links:	<ul style="list-style-type: none">• NCBI - NP_067708.1• GeneID - 59312• UniProtKB - Q9JLU4

Application Details

Tested Applications:	IF, IHC, IP, WB
Application Note:	Anti-SHANK3 Antibody is tested for use in WB, IHC, IF, and IP. Expect a band approximately ~190kDa on specific lysates. Specific conditions for reactivity should be optimized by the end user.
Assay Dilutions:	All assays should be optimized by the user. Recommended dilutions (if any) may be listed below.
IF:	1.0-10ug/mL
IHC:	0.1-1.0ug/mL
IP:	User Optimized
WB:	1-10ug/mL

Formulation

Physical State:	Liquid (sterile filtered)
Concentration:	1.0 mg/mL by UV absorbance at 280 nm
Buffer:	0.02 M Potassium Phosphate, 0.15 M Sodium Chloride, pH 7.2
Preservative:	0.09% (w/v) Sodium Azide
Stabilizer:	50% (v/v) Glycerol

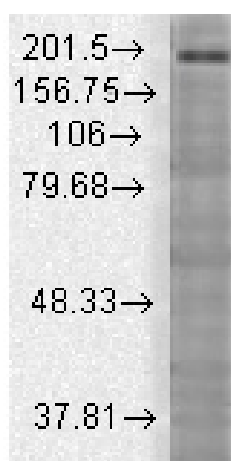
Shipping & Handling

Shipping Condition:	Dry Ice
----------------------------	---------

Storage Condition: Store vial at -20° C prior to opening. Aliquot contents and freeze at -20° C or below for extended storage. Avoid cycles of freezing and thawing. Centrifuge product if not completely clear after standing at room temperature. This product is stable for several weeks at 4° C as an undiluted liquid. Dilute only prior to immediate use.

Expiration: Expiration date is one (1) year from date of receipt.

Images



Western Blot

Western Blot of mouse anti-Shank3 antibody. Lane 1: Rat Brain Membrane lysate. Primary antibody: Shank3 antibody at 1:1000 for overnight at 4°C. Secondary antibody: Goat anti-mouse IgG HRP secondary antibody at 1:10,000 for 45 min at RT. Block: 5% Blotto overnight 4°C. Predicted/Observed size: 193.2 kDa/190kD. Other band(s): none.

Disclaimer

This product is for research use only and is not intended for therapeutic or diagnostic applications. Please contact a technical service representative for more information. All products of animal origin manufactured by Rockland Immunochemicals are derived from starting materials of North American origin. Collection was performed in United States Department of Agriculture (USDA) inspected facilities and all materials have been inspected and certified to be free of disease and suitable for exportation. All properties listed are typical characteristics and are not specifications. All suggestions and data are offered in good faith but without guarantee as conditions and methods of use of our products are beyond our control. All claims must be made within 30 days following the date of delivery. The prospective user must determine the suitability of our materials before adopting them on a commercial scale. Suggested uses of our products are not recommendations to use our products in violation of any patent or as a license under any patent of Rockland Immunochemicals, Inc. If you require a commercial license to use this material and do not have one, then return this material, unopened to: Rockland Inc., P.O. BOX 5199, Limerick, Pennsylvania, USA.