

Datasheet for 200-326-M63**CD4 APC Antibody****Overview**

Description:	Anti-CD4 (MOUSE) Allophycocyanin Conjugated Monoclonal Antibody - 200-326-M63
Item No.:	200-326-M63
Size:	500 µL
Applications:	FC
Reactivity:	Human
Host Species:	Mouse

Product Details

Background:	CD4 is an Immunoglobulin Superfamily protein and an accessory protein for MHC class-II antigen/ T-cell receptor interaction. It may regulate T-cell activation. It plays a more general role in mediating cell recognition events than merely those of cellular immune response. The T4 molecule serves as a receptor for the human immunodeficiency virus. A Type I membrane protein, it is expressed on T lymphocytes, B-cells, macrophages, and granulocytes. It is also expressed in a developmentally regulated manner in specific regions of the brain.
Synonyms:	T-cell surface glycoprotein CD4, T-cell surface antigen T4/Leu-3, CD4, FITC anti-human CD4, RPA-T4, FITC, T4
Host Species:	Mouse
Conjugate:	Allophycocyanine (APC)
Clonality:	Monoclonal
Clone ID:	RPA-T4
Format:	IgG1
F/P Ratio:	1-2

Target Details

Gene Name:	CD4
Reactivity:	Human

Immunogen Type:	Other
Immunogen:	Anti-CD4 Antibody (Monoclonal) was produced by repeated immunizations with PHA-stimulated human peripheral blood mononuclear cells (PBMC).
Purity/Specificity:	Allophycocyanin conjugated CD4 Monoclonal Antibody was Protein G Purified from tissue culture supernatant and is directed against human CD4. Reactivity is observed against human CD4 and chimpanzee. Cross reactivity with CD4 from other sources has not been tested.
Relevant Links:	<ul style="list-style-type: none">• UniProtKB - P01730• NCBI - NP_000607.1• GenelD - 920

Application Details

Tested Applications:	FC
Application Note:	Anti-CD4 is tested for Flow Cytometry (Cell Surface). Researchers should determine optimal titers for applications that are not stated.
Assay Dilutions:	All assays should be optimized by the user. Recommended dilutions (if any) may be listed below.
FC:	10 μ L/ 10^6 cells (0.1 μ g)

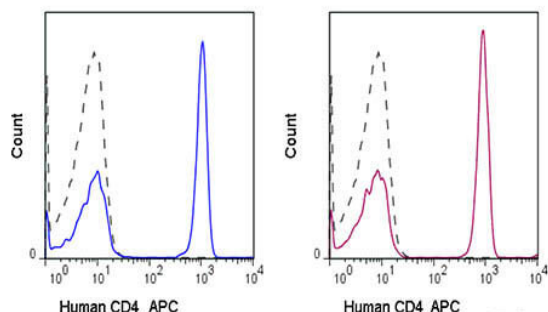
Formulation

Physical State:	Liquid (sterile filtered)
Concentration:	0.1 mg/mL Sufficient to run approximately 100 tests
Buffer:	0.01 M Sodium Phosphate, 0.15 M Sodium Chloride, pH 7.2
Preservative:	0.09% (w/v) Sodium Azide
Stabilizer:	0.1% Gelatin

Shipping & Handling

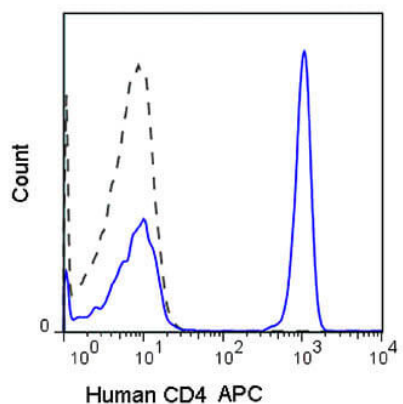
Shipping Condition:	Wet Ice
Storage Condition:	Store vial at 4° C prior to opening. Dilute only prior to immediate use. This product is stable at 4° C as an undiluted liquid. Use subdued lighting during handling and incubation of cells prior to analysis. Store reagent in the dark. DO NOT FREEZE.
Expiration:	Expiration date is six (6) months from date of receipt.

Images



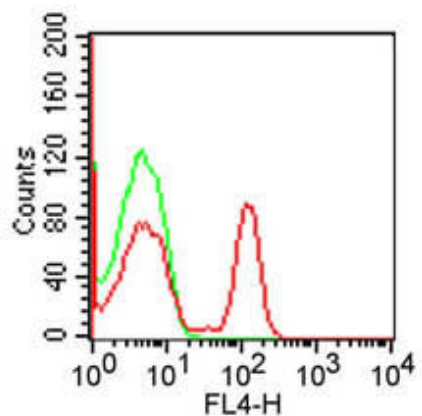
Flow Cytometry

Flow Cytometry of Mouse anti-HUMAN CD4 antibody Allophycocyanin conjugated. Cells: 10^6 Human peripheral blood lymphocytes. Stimulation: none. Antibody: (GRAY) 0.5 μ g of APC Mouse IgG1 isotype control antibody; (BLUE) Rockland Allophycocyanin Anti-CD4 mouse secondary antibody using 5 μ l (0.5 μ g), (ORANGE) Allophycocyanin Anti-CD4 mouse secondary control antibody.



Flow Cytometry

Flow Cytometry of Mouse anti-HUMAN CD4 antibody Allophycocyanin conjugated. Cells: 10^6 Human peripheral blood lymphocytes. Stimulation: none. Antibody: (GRAY) 0.5 μ g of APC Mouse IgG1 isotype control antibody; (BLUE) Allophycocyanin Anti-CD4 mouse secondary antibody using 5 μ l (0.5 μ g).



Flow Cytometry

Cell Surface Flow Cytometry of Mouse anti-HUMAN CD4 antibody Allophycocyanin conjugated. Cells: 10^6 human PBMC. Propidium iodide negative lymphocyte population gated for analysis. Stimulation: none. Antibody: (GREEN) isotype control antibody; (RED) Allophycocyanin Anti-CD4 mouse secondary antibody using 10 μ l (0.1 μ g).

Disclaimer

This product is for research use only and is not intended for therapeutic or diagnostic applications. Please contact a technical service representative for more information. All products of animal origin manufactured by Rockland Immunochemicals are derived from starting materials of North American origin. Collection was performed in United States Department of Agriculture (USDA) inspected facilities and all materials have been inspected and certified to be free of disease and suitable for exportation. All properties listed are typical characteristics and are not specifications. All suggestions and data are offered in good faith but without guarantee as conditions and methods of use of our products are beyond our control. All claims must be made within 30 days following the date of delivery. The prospective user must determine the suitability of our materials before adopting them on a commercial scale. Suggested uses of our products are not recommendations to use our products in violation of any patent or as a license under any patent of Rockland Immunochemicals, Inc. If you require a commercial license to use this material and do not have one, then return this material, unopened to: Rockland Inc., P.O. BOX 5199, Limerick, Pennsylvania, USA.