

**Datasheet for 200-326-N73****CD69 Allophycocyanin Antibody****Overview**

<b>Description:</b>	Anti-CD69 (MOUSE) Allophycocyanin Conjugated Monoclonal Antibody - 200-326-N73
<b>Item No.:</b>	200-326-N73
<b>Size:</b>	500 µL
<b>Applications:</b>	FC
<b>Reactivity:</b>	Human
<b>Host Species:</b>	Mouse

**Product Details**

<b>Background:</b>	CD69 is a 27-33 kD type II transmembrane protein also known as activation inducer molecule (AIM), very early activation antigen (VEA), and MLR3. It is a member of the C-type lectin family, expressed as a disulfide-linked homodimer. Other members of this receptor family include NKG2, NKR-P1 CD94, and Ly49. CD69 is transiently expressed on activated leukocytes including T cells, thymocytes, B cells, NK cells, neutrophils, and eosinophils. CD69 is constitutively expressed by a subset of medullary mature thymocytes, platelets, mantle B cells, and certain CD4+ T cells in germinal centers of normal lymph nodes. CD69 is involved in early events of lymphocyte, monocyte, and platelet activation, and has a functional role in redirected lysis mediated by activated NK cells.
<b>Synonyms:</b>	Early activation antigen CD69, Activation inducer molecule, AIM, BL-AC/P26, C-type lectin domain family 2 member C, EA1, Early T-cell activation antigen p60, GP32/28, Leukocyte surface antigen Leu-23, MLR-3, CD69, CLEC2C
<b>Host Species:</b>	Mouse
<b>Conjugate:</b>	Allophycocyanine (APC)
<b>Clonality:</b>	Monoclonal
<b>Clone ID:</b>	FN50
<b>Format:</b>	IgG1
<b>F/P Ratio:</b>	1-2

**Target Details**

<b>Gene Name:</b>	CD69
<b>Reactivity:</b>	Human
<b>Immunogen:</b>	Anti-CD69 Antibody (Monoclonal) was produced by repeated immunizations with CD69 antigen.
<b>Purity/Specificity:</b>	Allophycocyanin conjugated CD69 Monoclonal Antibody was purified from tissue culture supernatant via affinity chromatography and is directed against human CD69. Reactivity is observed against human CD69. Cross reactivity is observed with Chimpanzee, Baboon, Cynomolgus, Rhesus, and Pigtailed Macaque. Reactivity with CD69 from other sources has not been tested. Anti-CD69 is conjugated with APC under optimal conditions and the solution is free of unconjugated APC.
<b>Relevant Links:</b>	<ul style="list-style-type: none"><li>• <a href="#">UniProtKB - Q07108</a></li><li>• <a href="#">NCBI - NP_001772.1</a></li><li>• <a href="#">GenelD - 969</a></li></ul>

## Application Details

<b>Tested Applications:</b>	FC
<b>Application Note:</b>	Anti-CD69 is tested for Flow Cytometry and is useful in Immunohistochemistry and Immunofluorescence. Researchers should determine optimal titers for applications that are not stated.
<b>Assay Dilutions:</b>	All assays should be optimized by the user. Recommended dilutions (if any) may be listed below.
<b>FC:</b>	5 uL/test/1x10e5 to 1x10e8 cells
<b>IF:</b>	User Optimized
<b>IHC:</b>	User Optimized

## Formulation

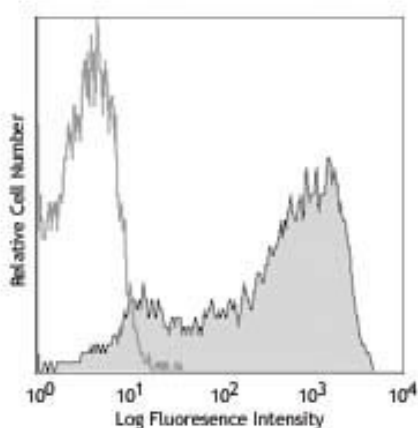
<b>Physical State:</b>	Liquid (sterile filtered)
<b>Buffer:</b>	0.02 M Potassium Phosphate, 0.15 M Sodium Chloride, pH 7.2
<b>Preservative:</b>	0.09% (w/v) Sodium Azide
<b>Stabilizer:</b>	0.2% BSA (w/v)

## Shipping & Handling

<b>Shipping Condition:</b>	Wet Ice
----------------------------	---------

<b>Storage Condition:</b>	Store vial at 4° C prior to opening. Dilute only prior to immediate use. This product is stable at 4° C as an undiluted liquid. Use subdued lighting during handling and incubation of cells prior to analysis. Store reagent in the dark. DO NOT FREEZE.
<b>Expiration:</b>	Expiration date is six (6) months from date of receipt.

## Images



### Flow Cytometry

Flow Cytometry of Mouse anti-CD69 Allophycocyanin Conjugated Monoclonal Antibody. Cells: Human lymphocytes. Stimulation: PMA and ionomycin (6 hrs). Antibody: (Grey dotted) APC Mouse IgG1 isotype control; (Grey Filled) Allophycocyanin Anti-CD69 mouse antibody using 5  $\mu$ l.

## Disclaimer

This product is for research use only and is not intended for therapeutic or diagnostic applications. Please contact a technical service representative for more information. All products of animal origin manufactured by Rockland Immunochemicals are derived from starting materials of North American origin. Collection was performed in United States Department of Agriculture (USDA) inspected facilities and all materials have been inspected and certified to be free of disease and suitable for exportation. All properties listed are typical characteristics and are not specifications. All suggestions and data are offered in good faith but without guarantee as conditions and methods of use of our products are beyond our control. All claims must be made within 30 days following the date of delivery. The prospective user must determine the suitability of our materials before adopting them on a commercial scale. Suggested uses of our products are not recommendations to use our products in violation of any patent or as a license under any patent of Rockland Immunochemicals, Inc. If you require a commercial license to use this material and do not have one, then return this material, unopened to: Rockland Inc., P.O. BOX 5199, Limerick, Pennsylvania, USA.