

Datasheet for 200-401-H95**NFATc1 Antibody****Overview**

Description:	Anti-NFATc1 (RABBIT) Antibody - 200-401-H95
Item No.:	200-401-H95
Size:	100 µg
Applications:	IF, WB
Reactivity:	Human, Mouse
Host Species:	Rabbit

Product Details

Background:	Anti-NFATc1 Antibody detect human NFATc1. NFAT (nuclear factor of activated T cell) transcription factors play critical roles in gene transcription during immune responses. The NFAT complex is made up of NFATc (NFATc1 - 4) and AP-1 transcription factor. NFAT proteins are regulated by Ca ²⁺ . NFATc1 is a substrate protein phosphatase calcineurin, a critical mediator of calcium signals during Tcell activation. NFATc1 activation requires the translocation of the transcription factor into the nucleus, a process that is mediated by calcineurin. Anti-NFATc1 Antibody is ideal for investigators involved in kinase and phosphatase research.
Synonyms:	NFAT2, NFATC, NF-ATc1, NFATc1, NFAT transcription complex cytosolic component, NF-Atc, NFATc
Host Species:	Rabbit
Clonality:	Polyclonal
Format:	IgG

Target Details

Gene Name:	NFATC1
Reactivity:	Human, Mouse
Immunogen Type:	Conjugated Peptide
Immunogen:	NFATc1 Antibody was produced from whole rabbit serum prepared by repeated immunizations with human NFATc1 at internal amino acids.

Purity/Specificity: Anti-NFATc1 Antibody was purified by Protein G chromatography. A BLAST analysis was used to suggest cross-reactivity with Anti-NFATc1 from human and mouse based on 100% homology with the immunizing sequence. Cross-reactivity with Anti-NFATc1 from other sources has not been determined.

Relevant Links:

- [UniProtKB - O95644](#)
- [NCBI - NP_006153.2](#)
- [GenelD - 4772](#)

Application Details

Tested Applications: IF, WB

Application Note: Anti-NFATc1 Antibody is tested for WB and ICC/IF. Expect a band approximately 90-110kDa on specific lysates. Specific conditions for reactivity should be optimized by the end user.

Assay Dilutions: All assays should be optimized by the user. Recommended dilutions (if any) may be listed below.

WB: 1-3 µg/mL

Formulation

Physical State: Liquid

Concentration: 0.5 mg/mL by UV absorbance at 280 nm

Buffer: 0.02 M Potassium Phosphate, 0.15 M Sodium Chloride, pH 7.2

Preservative: 0.05% (w/v) Sodium Azide

Stabilizer: 0.05% BSA

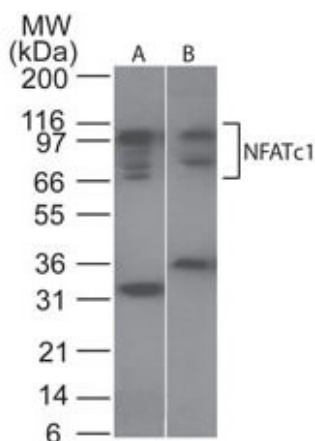
Shipping & Handling

Shipping Condition: Dry Ice

Storage Condition: Store vial at -20° C prior to opening. Aliquot contents and freeze at -20° C or below for extended storage. Avoid cycles of freezing and thawing. Centrifuge product if not completely clear after standing at room temperature. This product is stable for several weeks at 4° C as an undiluted liquid. Dilute only prior to immediate use.

Expiration: Expiration date is one (1) year from date of receipt.

Images



Western Blot

Western Blot of Rabbit Anti-NFATc1 antibody. Lane 1: human Ramos. Lane 2: mouse RAW cell lysate. Primary antibody: NFATc1 at 1 μ g/mL for overnight at 4°C. Secondary antibody: IRDye800™ rabbit secondary antibody at 1:10,000 for 45 min at RT. Block: 5% BLOTTO overnight at 4°C. Predicted/Observed size: ~80 kDa for NFATc1. Other band(s): none.

Disclaimer

This product is for research use only and is not intended for therapeutic or diagnostic applications. Please contact a technical service representative for more information. All products of animal origin manufactured by Rockland Immunochemicals are derived from starting materials of North American origin. Collection was performed in United States Department of Agriculture (USDA) inspected facilities and all materials have been inspected and certified to be free of disease and suitable for exportation. All properties listed are typical characteristics and are not specifications. All suggestions and data are offered in good faith but without guarantee as conditions and methods of use of our products are beyond our control. All claims must be made within 30 days following the date of delivery. The prospective user must determine the suitability of our materials before adopting them on a commercial scale. Suggested uses of our products are not recommendations to use our products in violation of any patent or as a license under any patent of Rockland Immunochemicals, Inc. If you require a commercial license to use this material and do not have one, then return this material, unopened to: Rockland Inc., P.O. BOX 5199, Limerick, Pennsylvania, USA.