

## Datasheet for 200-502-N85

**CD45.1 Fluorescein Antibody****Overview**

<b>Description:</b>	Anti-CD45.1 (MOUSE) Fluorescein Conjugated Monoclonal Antibody - 200-502-N85
<b>Item No.:</b>	200-502-N85
<b>Size:</b>	500 µg
<b>Applications:</b>	FC
<b>Reactivity:</b>	Mouse
<b>Host Species:</b>	Mouse

**Product Details**

<b>Background:</b>	The A20 antibody reacts with mouse CD45.1, also known as Ly5.1, which is a strain-specific allelic form of the CD45 Leukocyte Common Antigen (LCA). Functionally, CD45 is a protein tyrosine phosphatase whose broad cell distribution supports a critical role in many leukocyte functions, including regulation of signal transduction and cell activation associated with the T cell and B cell receptors. The A20 antibody is typically used as a leukocyte marker in Ly5.1 mouse strains: SJL/J, DA, STS/A and RIII. The antibody has been demonstrated to specific for CD45.1 and is not cross-reactive with CD45.2 bearing cells.
<b>Synonyms:</b>	Receptor-type tyrosine-protein phosphatase C, , ukocyte common antigen, L-CA, Lymphocyte antigen 5, Ly-5, T200, CD45, Ptprc, Ly-5
<b>Host Species:</b>	Mouse
<b>Conjugate:</b>	Fluorescein (FITC)
<b>Clonality:</b>	Monoclonal
<b>Clone ID:</b>	A20
<b>Format:</b>	IgG2a
<b>F/P Ratio:</b>	2-8

**Target Details**

<b>Gene Name:</b>	Ptprc
<b>Reactivity:</b>	Mouse

<b>Immunogen:</b>	Anti-CD45.1 Antibody (Monoclonal) was produced by repeated immunizations with CD45.1 antigen.
<b>Purity/Specificity:</b>	Fluorescein conjugated CD45.1 Monoclonal Antibody was purified from tissue culture supernatant via affinity chromatography and is directed against mouse CD45.1. Cross reactivity with CD45.1 from other sources has not been tested. Anti-CD45.1 is conjugated with FITC under optimal conditions and the solution is free of unconjugated FITC.
<b>Relevant Links:</b>	<ul style="list-style-type: none"><li>• <a href="#">UniProtKB - P06800</a></li></ul>

## Application Details

<b>Tested Applications:</b>	FC
<b>Application Note:</b>	Anti-CD45.1 is tested for Flow Cytometry and useful for Immunoprecipitation, and Immunohistochemistry using mouse spleen cells, or an appropriate cell type (where indicated). Researchers should determine optimal titers for applications that are not stated.
<b>Assay Dilutions:</b>	All assays should be optimized by the user. Recommended dilutions (if any) may be listed below.
<b>FC:</b>	10 $\mu$ L/10 <sup>6</sup> cells (0.1 $\mu$ g)
<b>IHC:</b>	User Optimized
<b>IP:</b>	User Optimized

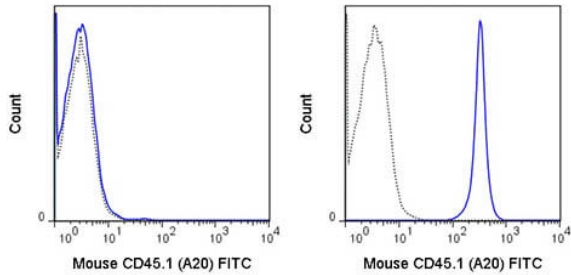
## Formulation

<b>Physical State:</b>	Liquid (sterile filtered)
<b>Concentration:</b>	0.5mg/mL by UV absorbance at 280 nm
<b>Buffer:</b>	0.01 M Sodium Phosphate, 0.15 M Sodium Chloride, pH 7.2
<b>Preservative:</b>	0.09% (w/v) Sodium Azide
<b>Stabilizer:</b>	0.1% Gelatin

## Shipping & Handling

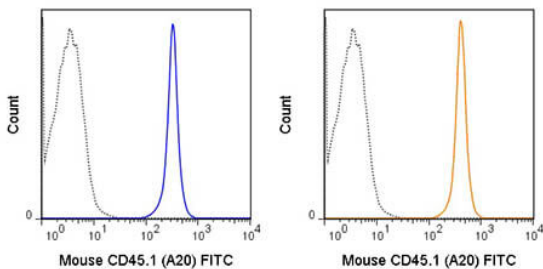
<b>Shipping Condition:</b>	Wet Ice
<b>Storage Condition:</b>	Store vial at 4° C prior to opening. This product is stable for several weeks at 4° C as an undiluted liquid. Dilute only prior to immediate use. DO NOT FREEZE. This product is light sensitive.
<b>Expiration:</b>	Expiration date is six (6) months from date of receipt.

## Images



### Flow Cytometry

Flow Cytometry of anti-CD45.1 Fluorescein Conjugated Monoclonal Antibody. Cells: C57Bl/6 splenocytes (left panel) or SJL splenocytes (right panel). Stimulation: None. Antibody: 0.125 ug Fluorescein Anti-CD45.1 (solid line) or 0.125 ug FITC Mouse IgG2a isotype control (dashed line).



### Flow Cytometry

Flow Cytometry of anti-CD45.1 Fluorescein Conjugated Monoclonal Antibody. Cells: SJL splenocytes. Stimulation: None. Antibody: (Dotted line) 0.125 ug FITC Mouse IgG2a isotype control; (Blue line) 0.125 ug Fluorescein Anti-CD45.1; (Yellow line) FITC Anti-CD45.1 control.

## Disclaimer

This product is for research use only and is not intended for therapeutic or diagnostic applications. Please contact a technical service representative for more information. All products of animal origin manufactured by Rockland Immunochemicals are derived from starting materials of North American origin. Collection was performed in United States Department of Agriculture (USDA) inspected facilities and all materials have been inspected and certified to be free of disease and suitable for exportation. All properties listed are typical characteristics and are not specifications. All suggestions and data are offered in good faith but without guarantee as conditions and methods of use of our products are beyond our control. All claims must be made within 30 days following the date of delivery. The prospective user must determine the suitability of our materials before adopting them on a commercial scale. Suggested uses of our products are not recommendations to use our products in violation of any patent or as a license under any patent of Rockland Immunochemicals, Inc. If you require a commercial license to use this material and do not have one, then return this material, unopened to: Rockland Inc., P.O. BOX 5199, Limerick, Pennsylvania, USA.