

Datasheet for 200-508-N84**CD45R (B220) Phycoerythrin Antibody****Overview**

| | |
|----------------------|--|
| Description: | Anti-CD45R (B220) (RAT) Phycoerythrin Conjugated Monoclonal Antibody - 200-508-N84 |
| Item No.: | 200-508-N84 |
| Size: | 200 µg |
| Applications: | FC |
| Reactivity: | Human, Mouse |
| Host Species: | Rat |

Product Details

| | |
|----------------------|---|
| Background: | CD45R, also known as B220, is an isoform of CD45. It is a member of the protein tyrosine phosphatase (PTP) family with a molecular weight of approximately 180-240 kD. CD45R is expressed on B cells (at all developmental stages from pro-B cells through mature B cells), activated B cells, and subsets of T and NK cells. CD45R (B220) is also expressed on a subset of abnormal T cells involved in the pathogenesis of systemic autoimmunity in MRL-Faslpr and MRL-Fasgld mice. It plays a critical role in TCR and BCR signaling. The primary ligands for CD45 are galectin-1, CD2, CD3, and CD4. CD45R is commonly used as a pan-B cell marker; however, CD19 may be more appropriate for B cell specificity. |
| Synonyms: | Receptor-type tyrosine-protein phosphatase C, , ukocyte common antigen, L-CA, Lymphocyte antigen 5, Ly-5, T200, CD45, Ptpcr, Ly-5 |
| Host Species: | Rat |
| Conjugate: | R-Phycoerythrin (RPE) |
| Clonality: | Monoclonal |
| Clone ID: | RA3-6B2 |
| Format: | IgG2a |
| F/P Ratio: | 1-2 |

Target Details

| | |
|-------------------|-------|
| Gene Name: | Ptpcr |
|-------------------|-------|

| | |
|----------------------------|--|
| Reactivity: | Human, Mouse |
| Immunogen Type: | Other |
| Immunogen: | Anti-CD45R (B220) Antibody (Monoclonal) was produced by repeated immunizations with Abelson murine leukemia virus-induced pre-B tumor cells. |
| Purity/Specificity: | Phycoerythrin conjugated CD45R (B220) Monoclonal Antibody was purified from tissue culture supernatant via affinity chromatography and is directed against mouse CD45R. Cross reactivity is observed with human and Feline. Cross-reactivity with CD45R from other sources has not been tested. Anti-CD45R is conjugated with PE under optimal conditions and the solution is free of unconjugated PE. |
| Relevant Links: | <ul style="list-style-type: none">• UniProtKB - P06800 |

Application Details

| | |
|-----------------------------|---|
| Tested Applications: | FC |
| Application Note: | Anti-CD45R (B220) is tested for Flow Cytometry and useful for Immunoprecipitation and Immunohistochemistry using mouse spleen cells, or an appropriate cell type (where indicated). Researchers should determine optimal titers for applications that are not stated. |
| Assay Dilutions: | All assays should be optimized by the user. Recommended dilutions (if any) may be listed below. |
| FC: | 10 μ L/10 ⁶ cells (0.1 μ g) |
| IHC: | User Optimized |
| IP: | User Optimized |

Formulation

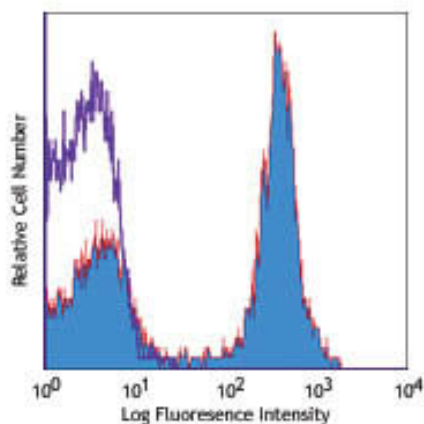
| | |
|------------------------|---|
| Physical State: | Liquid (sterile filtered) |
| Buffer: | 0.01 M Sodium Phosphate, 0.15 M Sodium Chloride, pH 7.2 |
| Preservative: | 0.09% (w/v) Sodium Azide |
| Stabilizer: | None |

Shipping & Handling

| | |
|----------------------------|---------|
| Shipping Condition: | Wet Ice |
|----------------------------|---------|

| | |
|---------------------------|---|
| Storage Condition: | Store vial at 4° C prior to opening. Dilute only prior to immediate use. This product is stable at 4° C as an undiluted liquid. Use subdued lighting during handling and incubation of cells prior to analysis. Store reagent in the dark. DO NOT FREEZE. |
| Expiration: | Expiration date is six (6) months from date of receipt. |

Images



Flow Cytometry

Flow Cytometry of anti-CD45R (B220) Phycoerythrin Conjugated Monoclonal Antibody. Cells: C57BL/6 mouse splenocytes. Stimulation: None. Antibody: (Blue Line) PE Rat IgG2a isotype control; (Filled Line) Phycoerythrin Anti-CD45R antibody.

Disclaimer

This product is for research use only and is not intended for therapeutic or diagnostic applications. Please contact a technical service representative for more information. All products of animal origin manufactured by Rockland Immunochemicals are derived from starting materials of North American origin. Collection was performed in United States Department of Agriculture (USDA) inspected facilities and all materials have been inspected and certified to be free of disease and suitable for exportation. All properties listed are typical characteristics and are not specifications. All suggestions and data are offered in good faith but without guarantee as conditions and methods of use of our products are beyond our control. All claims must be made within 30 days following the date of delivery. The prospective user must determine the suitability of our materials before adopting them on a commercial scale. Suggested uses of our products are not recommendations to use our products in violation of any patent or as a license under any patent of Rockland Immunochemicals, Inc. If you require a commercial license to use this material and do not have one, then return this material, unopened to: Rockland Inc., P.O. BOX 5199, Limerick, Pennsylvania, USA.