

Datasheet for 200-901-Z55

Beta Actin Antibody**Overview**

Description:	Anti-Beta Actin (CHICKEN) Antibody - 200-901-Z55
Item No.:	200-901-Z55
Size:	100 µg
Applications:	ELISA, IHC, WB
Reactivity:	Human, Mouse, Rat
Host Species:	Chicken

Product Details

Background:	Actins are highly conserved proteins that are involved in cell motility, structure and integrity, processes that are crucial for tissue development and the development of organism. The actin cytoskeleton is one of the principal drivers of cell motility and is capable of responding to complex signaling cascades. Recent evidence suggests that it may play key roles in regulating apoptosis and aging. Beta actin is one of six different actin isoforms which have been identified. Like GAPDH, beta-actin is constitutively expressed at high levels in almost all tissues and cell lines making it ideal for use as a loading control marker in immunoblots.
Synonyms:	Beta-actin Antibody, BRWS1, PS1TP5BP1, Actin, cytoplasmic 1, Beta-actin
Host Species:	Chicken
Clonality:	Polyclonal
Format:	IgY

Target Details

Gene Name:	ACTB
Reactivity:	Human, Mouse, Rat
Immunogen Type:	Conjugated Peptide
Immunogen:	Anti-Beta-actin antibody was prepared from chicken egg fractions produced by repeated immunizations with a 16 amino acid synthetic peptide from near the N-terminus of human beta-actin.

Purity/Specificity: Anti-Beta-actin Antibody is an IgY fraction that has been affinity purified by immunoaffinity purification. Cross reactivity with Beta-actin from other sources has not been determined.

Relevant Links:

- [UniProtKB - P60709](#)
- [GeneID - 60](#)
- [NCBI - AAH02409](#)

Application Details

Tested Applications: ELISA, IHC, WB

Application Note: Anti-Beta-actin Antibody has been tested for use in ELISA, Western Blotting, Immunocytochemistry. Specific conditions for reactivity should be optimized by the end user. Expect a band at approximately 42 kDa in Western Blots of specific cell lysates and tissues.

Assay Dilutions: All assays should be optimized by the user. Recommended dilutions (if any) may be listed below.

ELISA: 1:10,000 - 1:20,000

WB: 1 - 2 µg/mL

Formulation

Physical State: Liquid (sterile filtered)

Concentration: 1.0mg/ml by UV absorbance at 280 nm

Buffer: 0.01 M Sodium Phosphate, 0.25 M Sodium Chloride, pH 7.2

Preservative: 0.02% (w/v) Sodium Azide

Stabilizer: None

Shipping & Handling

Shipping Condition: Dry Ice

Storage Condition: Store vial at -20° C prior to opening. Aliquot contents and freeze at -20° C or below for extended storage. Avoid cycles of freezing and thawing. Centrifuge product if not completely clear after standing at room temperature. This product is stable for several weeks at 4° C as an undiluted liquid. Dilute only prior to immediate use.

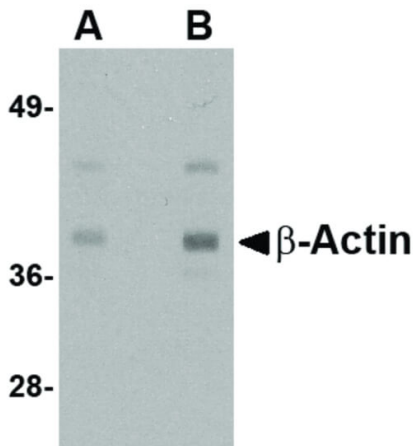
Expiration: Expiration date is one (1) year from date of receipt.

Images



Immunohistochemistry

Immunocytochemistry of Actin antibody . Tissue: HeLa cells.
Fixation: formalin fixed paraffin embedded. Antigen retrieval: not required. Primary antibody: Actin antibody at 2 µg/mL for 1 h at RT. Secondary antibody: Peroxidase chicken secondary antibody at 1:10,000 for 45 min at RT. Localization: Actin is cytoplasmic. Staining: Actin as precipitated brown signal with hematoxylin purple nuclear counterstain.



Western Blot

Western Blot of beta-actin antibody. Lane 1: HeLa cell lysate with beta-actin antibody at 1 µg/mL. Lane 2: HeLa cell lysate with beta-actin antibody at 2 µg/mL. Load: 35 µg per lane. Secondary antibody: Peroxidase chicken secondary antibody at 1:10,000 for 45 min at RT. Block: 5% BLOTTO overnight at 4°C. Predicted/Observed size: 41.7 kDa, 39 kDa for beta-actin. Other band(s): Beta-actin splice variants and isoforms.

Disclaimer

This product is for research use only and is not intended for therapeutic or diagnostic applications. Please contact a technical service representative for more information. All products of animal origin manufactured by Rockland Immunochemicals are derived from starting materials of North American origin. Collection was performed in United States Department of Agriculture (USDA) inspected facilities and all materials have been inspected and certified to be free of disease and suitable for exportation. All properties listed are typical characteristics and are not specifications. All suggestions and data are offered in good faith but without guarantee as conditions and methods of use of our products are beyond our control. All claims must be made within 30 days following the date of delivery. The prospective user must determine the suitability of our materials before adopting them on a commercial scale. Suggested uses of our products are not recommendations to use our products in violation of any patent or as a license under any patent of Rockland Immunochemicals, Inc. If you require a commercial license to use this material and do not have one, then return this material, unopened to: Rockland Inc., P.O. BOX 5199, Limerick, Pennsylvania, USA.