

Datasheet for 600-401-860**Slit1 Antibody****Overview**

Description:	Anti-SLIT-1 (RABBIT) Antibody - 600-401-860
Item No.:	600-401-860
Size:	100 µg
Applications:	ELISA, WB
Reactivity:	Mouse, Rat
Host Species:	Rabbit

Product Details

Background: SLIT-1 (also known as KIAA0813, MEGF4, multiple epidermal growth factor-like domains 4 and Slit homolog 1 protein) is a Slit protein. This protein is a ligand for the Roundabout (Robo) receptors and acts as guidance cues in axonal migration/navigation during neural development, at the ventral midline of the neural tube. Slit1 and Slit2 are essential for midline guidance in the forebrain by acting as repulsive signals preventing inappropriate midline crossing by axons projecting from the olfactory bulb. Each SLIT gene encodes a putative secreted protein, which contains conserved protein-protein interaction domains including leucine-rich repeats and epidermal growth factor-like motifs, similar to those of the Drosophila protein. In situ hybridization studies indicated that the rat SLIT-1 mRNA was specifically expressed in the neurons of fetal and adult forebrains. This data suggests that the SLIT genes form an evolutionarily conserved group in vertebrates and invertebrates, and that the mammalian SLIT proteins may participate in the formation and maintenance of the nervous and endocrine systems by protein-protein interactions. Alternative splicing isoforms have been identified for Slit1 protein.

Synonyms:	rabbit anti-Slit-1 antibody, Slit1, Slit 1, Slit homolog 1 protein
Host Species:	Rabbit
Clonality:	Polyclonal
Format:	IgG

Target Details

Gene Name:	Slit1
-------------------	-------

Reactivity:	Mouse, Rat
Immunogen Type:	Conjugated Peptide
Immunogen:	This affinity purified antibody was prepared from whole rabbit serum produced by repeated immunizations with a synthetic peptide corresponding to an internal region near aa 485-515 of mouse SLIT-1 protein.
Purity/Specificity:	This affinity purified antibody is directed against mouse SLIT-1 protein. The product was affinity purified from monospecific antiserum by immunoaffinity purification. A BLAST analysis was used to suggest reactivity with this protein from mouse and rat based on 100% homology for the immunogen sequence. Expect cross reactivity with SLIT-1 from human, chicken and frog sources, as only a single amino acid residue change is found within the immunogen sequence (94% positive by BLAST). Cross reactivity with SLIT-1 homologues from other sources has not been determined.
Relevant Links:	<ul style="list-style-type: none">• UniProtKB - Q80TR4• NCBI - 256355216• GeneID - 20562

Application Details

Tested Applications:	ELISA, WB
Application Note:	This affinity purified antibody has been tested for use in ELISA and by western blot. Specific conditions for reactivity should be optimized by the end user. Expect multiple bands corresponding to cleavage products of SLIT-1 by western blotting in the appropriate cell lysate or extract.
Assay Dilutions:	All assays should be optimized by the user. Recommended dilutions (if any) may be listed below.
ELISA:	1:10,000 - 1:50,000
WB:	1:500 - 1:2,000

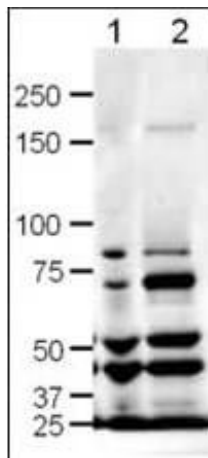
Formulation

Physical State:	Liquid (sterile filtered)
Concentration:	1.2 mg/mL by UV absorbance at 280 nm
Buffer:	0.02 M Potassium Phosphate, 0.15 M Sodium Chloride, pH 7.2
Preservative:	0.01% (w/v) Sodium Azide
Stabilizer:	None

Shipping & Handling

Shipping Condition:	Dry Ice
Storage Condition:	Store vial at -20° C prior to opening. Aliquot contents and freeze at -20° C or below for extended storage. Avoid cycles of freezing and thawing. Centrifuge product if not completely clear after standing at room temperature. This product is stable for several weeks at 4° C as an undiluted liquid. Dilute only prior to immediate use.
Expiration:	Expiration date is one (1) year from date of receipt.

Images



Western Blot

Western blot using Rockland's Affinity Purified anti-SLIT-1 antibody shows detection of SLIT-1 in rat (lane 1) and mouse (lane 2) brain lysates. The expected molecular weight for SLIT-1 is 168 kDa. Approximately 20 µg of each lysates was run on a SDS-PAGE and transferred onto nitrocellulose followed by reaction with a 1:500 dilution of anti-SLIT-1 antibody. Signal was detected using standard techniques. Note: The smaller strong bands observed in this blot are likely SLIT-1 cleavage products. A number of cleavage products for both Slit1 and Slit2 are reported in the literature resulting from alternate splicing and range from ~40kDa -160kDa (see Little et al, 2002 for additional details).

Disclaimer

This product is for research use only and is not intended for therapeutic or diagnostic applications. Please contact a technical service representative for more information. All products of animal origin manufactured by Rockland Immunochemicals are derived from starting materials of North American origin. Collection was performed in United States Department of Agriculture (USDA) inspected facilities and all materials have been inspected and certified to be free of disease and suitable for exportation. All properties listed are typical characteristics and are not specifications. All suggestions and data are offered in good faith but without guarantee as conditions and methods of use of our products are beyond our control. All claims must be made within 30 days following the date of delivery. The prospective user must determine the suitability of our materials before adopting them on a commercial scale. Suggested uses of our products are not recommendations to use our products in violation of any patent or as a license under any patent of Rockland Immunochemicals, Inc. If you require a commercial license to use this material and do not have one, then return this material, unopened to: Rockland Inc., P.O. BOX 5199, Limerick, Pennsylvania, USA.