

Datasheet for 600-401-BR1**HHATL Antibody****Overview**

Description:	Anti-HHATL (RABBIT) Antibody - 600-401-BR1
Item No.:	600-401-BR1
Size:	100 µg
Applications:	ELISA, IF, IHC, WB
Reactivity:	Human, Mouse, Rat
Host Species:	Rabbit

Product Details

Background:	The Protein-cysteine N-palmitoyltransferase HHAT-like protein (HHATL), also known as the mammalian glycerol uptake/transporter 1 (Gup1) is a homolog of the <i>S. cerevisiae</i> Gup1. It is an endoplasmic reticulum (ER) membrane protein that co-localizes with the mammalian hedgehog acyltransferase Skn and interferes with its N-terminal palmitoylation of Sonic hedgehog (SHH), suggesting that HHATL acts as a negative regulator for N-terminal palmitoylation of SHH. HHATL is highly expressed in normal skin, but becomes down-regulated in skin squamous cell carcinoma, suggesting it may play a role in its development.
Synonyms:	HHATL Antibody, GUP1, OACT3, C3orf3, MBOAT3, MSTP002, GUP1, KIAA1173, Protein-cysteine N-palmitoyltransferase HHAT-like protein, Hedgehog acyltransferase-like protein
Host Species:	Rabbit
Clonality:	Polyclonal
Format:	IgG

Target Details

Gene Name:	HHATL
Reactivity:	Human, Mouse, Rat
Immunogen Type:	Conjugated Peptide
Immunogen:	Anti-HHATL antibody was prepared from whole rabbit serum produced by repeated immunizations with a 19 amino acid synthetic peptide near the N-terminus of human HHATL.

Purity/Specificity: Anti-HHATL Antibody was affinity purified from monospecific antiserum by immunoaffinity chromatography. Cross reactivity with HHATL from other sources has not been determined.

Relevant Links:

- [UniProtKB - Q9HCP6](#)
- [GeneID - 57467](#)
- [NCBI - NP_065758](#)

Application Details

Tested Applications: ELISA, IF, IHC, WB

Application Note: Anti-HHATL Antibody has been tested for use in ELISA, Western Blotting, Immunohistochemistry and Immunofluorescence. Specific conditions for reactivity should be optimized by the end user. Expect a band at approximately 57 kDa in Western Blots of specific cell lysates and tissues.

Assay Dilutions: All assays should be optimized by the user. Recommended dilutions (if any) may be listed below.

ELISA: 1:10,000

IF: 2.5 µg/mL

IHC: 2.5 µg/mL

WB: 1 µg/mL

Formulation

Physical State: Liquid (sterile filtered)

Concentration: 1 mg/mL by UV absorbance at 280 nm

Buffer: 0.01 M Sodium Phosphate, 0.25 M Sodium Chloride, pH 7.2

Preservative: 0.02% (w/v) Sodium Azide

Stabilizer: None

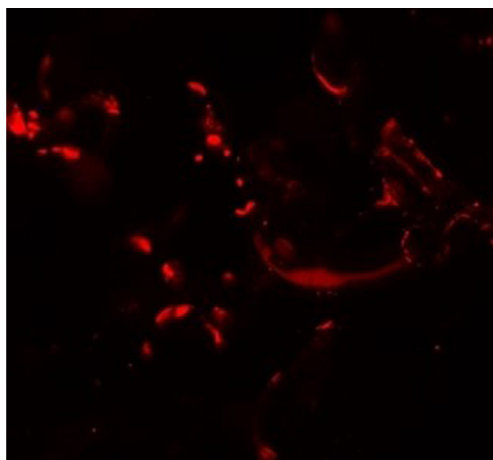
Shipping & Handling

Shipping Condition: Dry Ice

Storage Condition: Store vial at -20° C prior to opening. Aliquot contents and freeze at -20° C or below for extended storage. Avoid cycles of freezing and thawing. Centrifuge product if not completely clear after standing at room temperature. This product is stable for several weeks at 4° C as an undiluted liquid. Dilute only prior to immediate use.

Expiration:

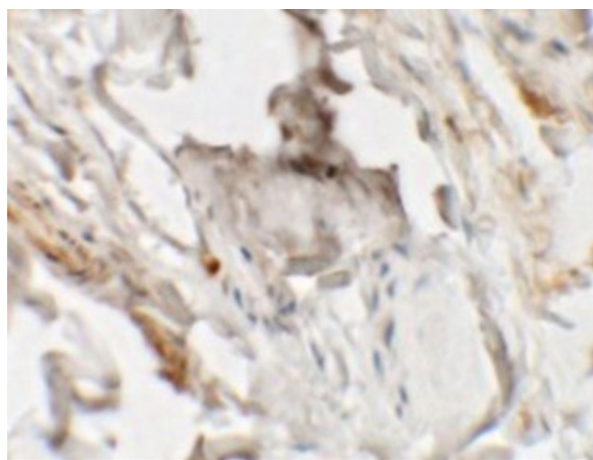
Expiration date is one (1) year from date of receipt.

Images**Immunofluorescence Microscopy**

Immunofluorescence of HHATL.

Tissue: human skin tissue.

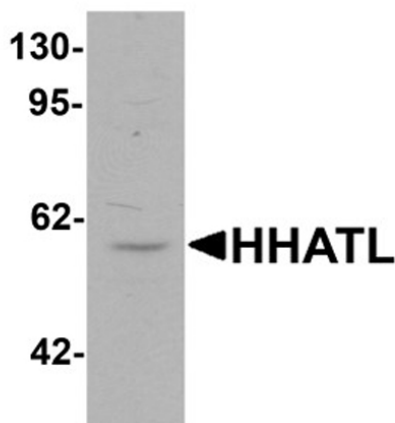
Primary Antibody: HHATL antibody at 20 µg/mL.

**Immunohistochemistry**

Immunohistochemistry of HHATL.

Tissue: human skin tissue.

Primary Antibody: HHATL antibody at 2.5 µg/mL.

**Western Blot**

Western blot analysis of HHATL.

Load: 3T3 cell lysate.

Primary Antibody: HHATL antibody at 1 µg/mL.

Disclaimer

This product is for research use only and is not intended for therapeutic or diagnostic applications. Please contact a technical service representative for more information. All products of animal origin manufactured by Rockland Immunochemicals are derived from starting materials of North American origin. Collection was performed in United States Department of Agriculture (USDA) inspected facilities and all materials have been inspected and certified to be free of disease and suitable for exportation. All properties listed are typical characteristics and are not specifications. All suggestions and data are offered in good faith but without guarantee as conditions and methods of use of our products are beyond our control. All claims must be made within 30 days following the date of delivery. The prospective user must determine the suitability of our materials before adopting them on a commercial scale. Suggested uses of our products are not recommendations to use our products in violation of any patent or as a license under any patent of Rockland Immunochemicals, Inc. If you require a commercial license to use this material and do not have one, then return this material, unopened to: Rockland Inc., P.O. BOX 5199, Limerick, Pennsylvania, USA.