

Datasheet for 600-401-BU0**IKK alpha Antibody****Overview**

Description:	Anti-IKK alpha (RABBIT) Antibody - 600-401-BU0
Item No.:	600-401-BU0
Size:	100 µg
Applications:	ELISA, IF, IHC, WB
Reactivity:	Human
Host Species:	Rabbit

Product Details

Background:	Nuclear factor kappa B (NF-κB) is a ubiquitous transcription factor and an essential mediator of gene expression during activation of immune and inflammatory responses. NF-κB mediates the expression of a great variety of genes in response to extracellular stimuli including IL-1, TNFα and bacteria product LPS. NF-κB is associated with IκB proteins in the cell cytoplasm, which inhibit NF-κB activity. The long-sought IκB kinase (IKK), which phosphorylates IκB, and mediates IκB degradation and NF-κB activation, was recently identified by several laboratories. IKK is a serine protein kinase, and the IKK complex contains alpha and beta subunits (IKKα and IKKβ). IKKα and IKKβ interact with each other and both are essential for the NF-κB activation. IKKα specifically phosphorylates IκB-α. IKKα is expressed in a variety of human tissues.
Synonyms:	IKK alpha Antibody, IKK1, IKKα, IKBKA, TCF16, NFKB1A, IKK-α, Inhibitor of nuclear factor kappa-B kinase subunit alpha, Conserved helix-loop-helix ubiquitous kinase, I-κappa-B kinase alpha
Host Species:	Rabbit
Clonality:	Polyclonal
Format:	IgG

Target Details

Gene Name:	CHUK
Reactivity:	Human
Immunogen Type:	Conjugated Peptide

Immunogen:	Anti-IKK alpha antibody was prepared from whole rabbit serum produced by repeated immunizations with a 17 amino acid peptide near the C-terminus of human IKK alpha.
Purity/Specificity:	Anti-IKK alpha Antibody was affinity purified from monospecific antiserum by immunoaffinity chromatography. This polyclonal antibody has no cross response to IKKb or IKKy.
Relevant Links:	<ul style="list-style-type: none">• UniProtKB - O15111• GeneID - 1147• NCBI - AF009225

Application Details

Tested Applications:	ELISA, IF, IHC, WB
Application Note:	Anti-IKK alpha Antibody has been tested for use in ELISA, Western Blotting, Immunocytochemistry and Immunofluorescence. Specific conditions for reactivity should be optimized by the end user. Expect a band at approximately 85 kDa in Western Blots of specific cell lysates and tissues.
Assay Dilutions:	All assays should be optimized by the user. Recommended dilutions (if any) may be listed below.
ELISA:	1:5,000
IF:	20 µg/mL
WB:	0.5 µg/mL

Formulation

Physical State:	Liquid (sterile filtered)
Concentration:	1 mg/mL by UV absorbance at 280 nm
Buffer:	0.01 M Sodium Phosphate, 0.25 M Sodium Chloride, pH 7.2
Preservative:	0.02% (w/v) Sodium Azide
Stabilizer:	None

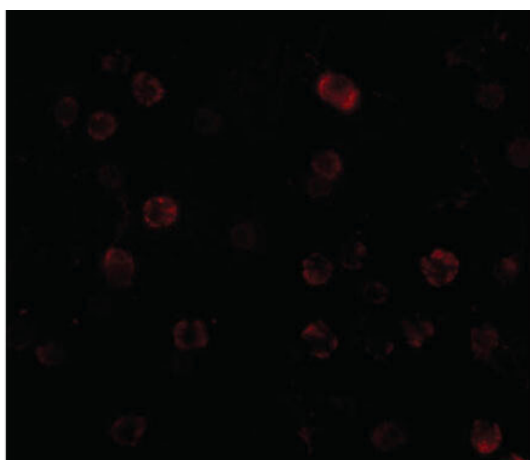
Shipping & Handling

Shipping Condition:	Dry Ice
----------------------------	---------

Storage Condition: Store vial at -20° C prior to opening. Aliquot contents and freeze at -20° C or below for extended storage. Avoid cycles of freezing and thawing. Centrifuge product if not completely clear after standing at room temperature. This product is stable for several weeks at 4° C as an undiluted liquid. Dilute only prior to immediate use.

Expiration: Expiration date is one (1) year from date of receipt.

Images



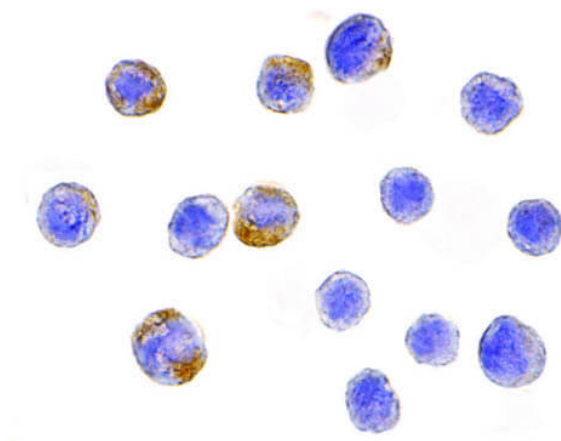
Immunofluorescence Microscopy

Immunofluorescence Microscopy of IKK alpha antibody.

Tissue: HeLa cells. Fixation: 0.5% PFA. Antigen retrieval:

not required. Primary antibody: IKK alpha antibody at 2 µg/mL for 1 h at RT. Secondary antibody: Fluorescein rabbit secondary antibody at 1:10,000 for 45 min at RT.

Localization: IKK alpha is nuclear and cytoplasmic. Staining: IKK alpha as red fluorescent signal.



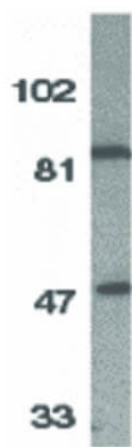
Immunocytochemistry

Immunocytochemistry of IKK alpha antibody. Cells: HeLa

cells. Fixation: formalin fixed paraffin embedded. Antigen

retrieval: not required. Primary antibody: IKK alpha antibody at 10 µg/mL for 1 h at RT. Secondary antibody: Peroxidase rabbit secondary antibody at 1:10,000 for 45 min at RT. Localization: IKK alpha is nuclear and cytoplasmic.

Staining: IKK alpha as precipitated brown signal with hematoxylin blue nuclear counterstain.

**Western Blot**

Western Blot of IKK alpha antibody. Lane 1: HeLa whole cell lysate. Load: 35 µg per lane. Primary antibody: IKK alpha antibody at 1:500 for overnight at 4°C. Secondary antibody: Peroxidase rabbit secondary antibody at 1:10,000 for 45 min at RT. Block: 5% BLOTTO overnight at 4°C.

Predicted/Observed size: 84.6 kDa, 86 kDa for IKK alpha.

Other band(s): IKK alpha splice variants and isoforms.

Disclaimer

This product is for research use only and is not intended for therapeutic or diagnostic applications. Please contact a technical service representative for more information. All products of animal origin manufactured by Rockland Immunochemicals are derived from starting materials of North American origin. Collection was performed in United States Department of Agriculture (USDA) inspected facilities and all materials have been inspected and certified to be free of disease and suitable for exportation. All properties listed are typical characteristics and are not specifications. All suggestions and data are offered in good faith but without guarantee as conditions and methods of use of our products are beyond our control. All claims must be made within 30 days following the date of delivery. The prospective user must determine the suitability of our materials before adopting them on a commercial scale. Suggested uses of our products are not recommendations to use our products in violation of any patent or as a license under any patent of Rockland Immunochemicals, Inc. If you require a commercial license to use this material and do not have one, then return this material, unopened to: Rockland Inc., P.O. BOX 5199, Limerick, Pennsylvania, USA.