

**Datasheet for 600-401-DD1****NOD5 Antibody****Overview**

<b>Description:</b>	Anti-NOD5 (RABBIT) Antibody - 600-401-DD1
<b>Item No.:</b>	600-401-DD1
<b>Size:</b>	100 µg
<b>Applications:</b>	ELISA, IF, IHC, WB
<b>Reactivity:</b>	Human, Mouse, Rat
<b>Host Species:</b>	Rabbit

**Product Details**

<b>Background:</b>	NOD5, also known as NLRX1, is a member of the NOD (nucleotide-binding oligomerization domain) family, a group of proteins that are involved in innate immune defense. NOD5 localizes to the mitochondrial outer membrane and interacts with the virus-induced signaling adapter protein VISA. Unlike a subset of NOD-like receptors (NLRs) such as NOD1 and NOD2 which trigger pro-inflammatory cascades, and other NLRs that induce the caspase 1 inflammasome in response to immune challenges, NOD5 amplifies NF-κB and JNK pathways by inducing reactive oxygen species production.
<b>Synonyms:</b>	NOD5 Antibody, NOD5, NOD9, NOD26, DLNB26, CLR11.3, NOD5, NLR family member X1, Nucleotide-binding oligomerization domain protein 26
<b>Host Species:</b>	Rabbit
<b>Clonality:</b>	Polyclonal
<b>Format:</b>	IgG

**Target Details**

<b>Gene Name:</b>	NLRX1
<b>Reactivity:</b>	Human, Mouse, Rat
<b>Immunogen Type:</b>	Conjugated Peptide
<b>Immunogen:</b>	Anti-NOD5 antibody was prepared from whole rabbit serum produced by repeated immunizations with a 14 amino acid synthetic peptide near the N-terminus of human NOD5.

**Purity/Specificity:** Anti-NOD5 Antibody was affinity purified from monospecific antiserum by immunoaffinity chromatography. Cross reactivity with NOD5 from other sources has not been determined.

**Relevant Links:**

- [UniProtKB - Q86UT6](#)
- [GeneID - 79671](#)
- [NCBI - NP\\_078894](#)

## Application Details

**Tested Applications:** ELISA, IF, IHC, WB

**Application Note:** Anti-NOD5 Antibody has been tested for use in ELISA, Western Blotting, Immunohistochemistry and Immunofluorescence. Specific conditions for reactivity should be optimized by the end user. Expect a band at approximately 108 kDa in Western Blots of specific cell lysates and tissues.

**Assay Dilutions:** All assays should be optimized by the user. Recommended dilutions (if any) may be listed below.

**ELISA:** 1:10,000 - 1:20,000

**IF:** 20 µg/mL

**IHC:** 10 µg/mL

**WB:** 1-2 µg/mL

## Formulation

**Physical State:** Liquid (sterile filtered)

**Concentration:** 1.0mg/mL by UV absorbance at 280 nm

**Buffer:** 0.01 M Sodium Phosphate, 0.25 M Sodium Chloride, pH 7.2

**Preservative:** 0.02% (w/v) Sodium Azide

**Stabilizer:** None

## Shipping & Handling

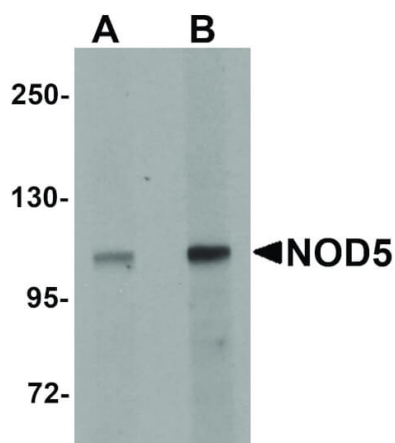
**Shipping Condition:** Dry Ice

**Storage Condition:** Store vial at -20° C prior to opening. Aliquot contents and freeze at -20° C or below for extended storage. Avoid cycles of freezing and thawing. Centrifuge product if not completely clear after standing at room temperature. This product is stable for several weeks at 4° C as an undiluted liquid. Dilute only prior to immediate use.

**Expiration:**

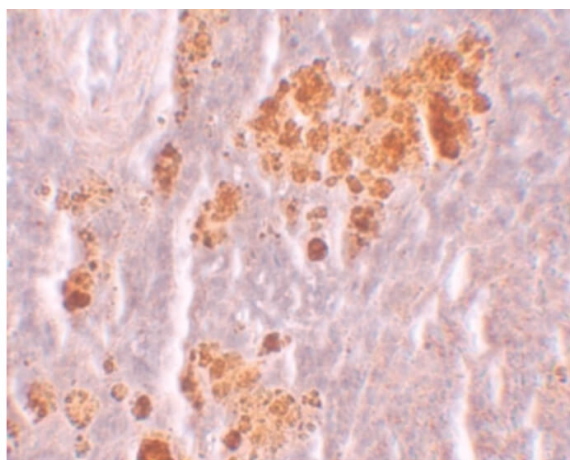
Expiration date is one (1) year from date of receipt.

## Images



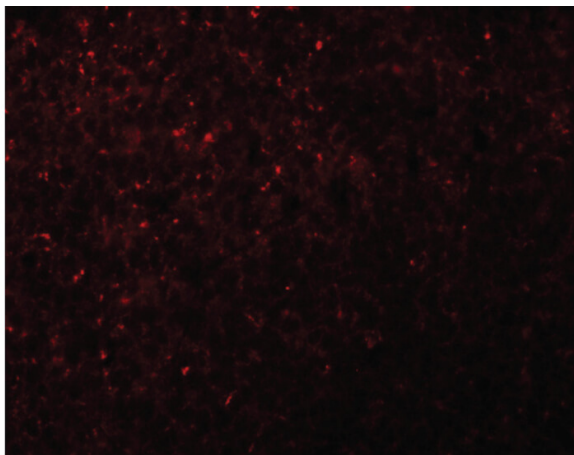
### Western Blot

Western Blot of NOD5 antibody. Lane 1: Rat spleen tissue lysate with NOD5 antibody at 1  $\mu\text{g}/\text{mL}$ . Lane 2: Rat spleen tissue lysate with NOD5 antibody at 2  $\mu\text{g}/\text{mL}$ . Secondary antibody: Peroxidase rabbit secondary antibody at 1:10,000 for 45 min at RT. Block: 5% BLOTTO overnight at 4°C. Predicted/Observed size: 108 kDa, 108 kDa for NOD5. Other band(s): NOD5 splice variants and isoforms.



### Immunohistochemistry

Immunohistochemistry of NOD5 antibody. Tissue: Rat spleen tissue. Fixation: formalin fixed paraffin embedded. Antigen retrieval: not required. Primary antibody: NOD5 antibody at 10  $\mu\text{g}/\text{mL}$  for 1 h at RT. Secondary antibody: Peroxidase rabbit secondary antibody at 1:10,000 for 45 min at RT. Localization: NOD5 is localized on the outer membrane of the mitochondrion. Staining: NOD5 as precipitated purple signal with brown nuclear counterstain.

**Immunofluorescence Microscopy**

Immunofluorescence Microscopy of NOD5 antibody. Tissue: Rat spleen tissue. Fixation: 0.5% PFA. Antigen retrieval: not required. Primary antibody: NOD5 antibody at 20 µg/mL for 1 h at RT. Secondary antibody: Fluorescein rabbit secondary antibody at 1:10,000 for 45 min at RT. Localization: NOD5 is localized on the outer membrane of the mitochondrion. Staining: NOD5 as red fluorescent signal.

**Disclaimer**

This product is for research use only and is not intended for therapeutic or diagnostic applications. Please contact a technical service representative for more information. All products of animal origin manufactured by Rockland Immunochemicals are derived from starting materials of North American origin. Collection was performed in United States Department of Agriculture (USDA) inspected facilities and all materials have been inspected and certified to be free of disease and suitable for exportation. All properties listed are typical characteristics and are not specifications. All suggestions and data are offered in good faith but without guarantee as conditions and methods of use of our products are beyond our control. All claims must be made within 30 days following the date of delivery. The prospective user must determine the suitability of our materials before adopting them on a commercial scale. Suggested uses of our products are not recommendations to use our products in violation of any patent or as a license under any patent of Rockland Immunochemicals, Inc. If you require a commercial license to use this material and do not have one, then return this material, unopened to: Rockland Inc., P.O. BOX 5199, Limerick, Pennsylvania, USA.