

**Datasheet for 600-401-DK7****PDGF-B Antibody****Overview**

<b>Description:</b>	Anti-PDGF-B (RABBIT) Antibody - 600-401-DK7
<b>Item No.:</b>	600-401-DK7
<b>Size:</b>	100 µg
<b>Applications:</b>	ELISA, IF, WB
<b>Reactivity:</b>	Human, Mouse, Rat
<b>Host Species:</b>	Rabbit

**Product Details**

<b>Background:</b>	The platelet-derived growth factor beta (PDGF-B) is a member of the platelet-derived growth factor family. The four members of this family are mitogenic factors for cells of mesenchymal origin and are characterized by a motif of eight cysteines. This gene product can exist either as a homodimer (PDGF-BB) or as a heterodimer with the platelet-derived growth factor alpha polypeptide (PDGF-AB). Mutations in this gene are associated with meningioma , and reciprocal translocations between chromosomes 22 and 7, at sites where the PDGF-B gene and that for COL1A1 are located, are associated with a particular type of skin tumor called dermatofibrosarcoma protuberans.
<b>Synonyms:</b>	PDGF-B Antibody, SIS, SSV, IBGC5, PDGF2, c-sis, PDGF-2, SIS, Platelet-derived growth factor subunit B, PDGF subunit B
<b>Host Species:</b>	Rabbit
<b>Clonality:</b>	Polyclonal
<b>Format:</b>	IgG

**Target Details**

<b>Gene Name:</b>	PDGFB
<b>Reactivity:</b>	Human, Mouse, Rat
<b>Immunogen Type:</b>	Conjugated Peptide
<b>Immunogen:</b>	Anti- PDGF-B antibody was prepared from whole rabbit serum produced by repeated immunizations with a 19 amino acid peptide near the C-terminus of human PDGF-B.

<b>Purity/Specificity:</b>	Anti-PDGF-B Antibody was affinity purified from monospecific antiserum by immunoaffinity chromatography. Cross reactivity with PDGF-B from other sources has not been determined.
<b>Relevant Links:</b>	<ul style="list-style-type: none"><li>• <a href="#">UniProtKB - P01127</a></li><li>• <a href="#">GeneID - 5155</a></li><li>• <a href="#">NCBI - NP_002599</a></li></ul>

## Application Details

<b>Tested Applications:</b>	ELISA, IF, WB
<b>Application Note:</b>	Anti-PDGF-B Antibody has been tested for use in ELISA, Western Blotting and Immunofluorescence. Specific conditions for reactivity should be optimized by the end user. Expect a band at approximately 27 kDa in Western Blots of specific cell lysates and tissues.
<b>Assay Dilutions:</b>	All assays should be optimized by the user. Recommended dilutions (if any) may be listed below.
<b>ELISA:</b>	1:10,000-1:20,000
<b>IF:</b>	User Optimized
<b>WB:</b>	1-2 µg/mL

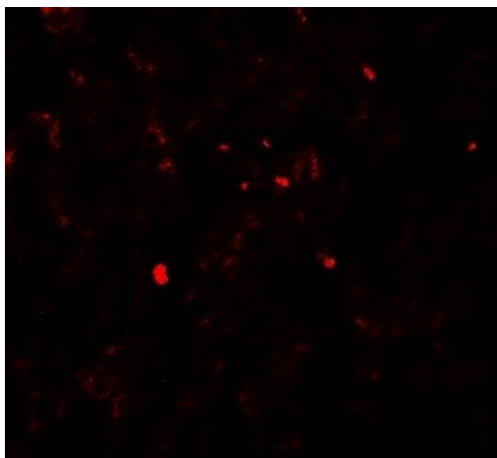
## Formulation

<b>Physical State:</b>	Liquid (sterile filtered)
<b>Concentration:</b>	1 mg/mL by UV absorbance at 280 nm
<b>Buffer:</b>	0.01 M Sodium Phosphate, 0.25 M Sodium Chloride, pH 7.2
<b>Preservative:</b>	0.02% (w/v) Sodium Azide
<b>Stabilizer:</b>	None

## Shipping & Handling

<b>Shipping Condition:</b>	Dry Ice
<b>Storage Condition:</b>	Store vial at -20° C prior to opening. Aliquot contents and freeze at -20° C or below for extended storage. Avoid cycles of freezing and thawing. Centrifuge product if not completely clear after standing at room temperature. This product is stable for several weeks at 4° C as an undiluted liquid. Dilute only prior to immediate use.
<b>Expiration:</b>	Expiration date is one (1) year from date of receipt.

## Images

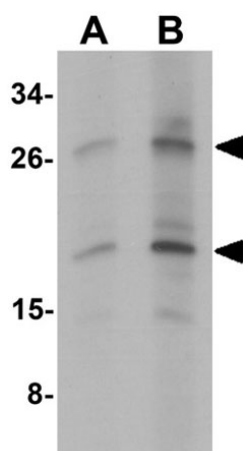


### Immunofluorescence Microscopy

Immunofluorescence of PDGF-B.

Tissue: human liver tissue.

Primary Antibody: PDGF-B antibody at 20 µg/ml.



### Western Blot

Western blot analysis of PDGF-B.

Load: rat liver tissue lysate.

Primary Antibody: PDGF-B antibody at (A) 1 and (B) 2 µg/mL.

## Disclaimer

This product is for research use only and is not intended for therapeutic or diagnostic applications. Please contact a technical service representative for more information. All products of animal origin manufactured by Rockland Immunochemicals are derived from starting materials of North American origin. Collection was performed in United States Department of Agriculture (USDA) inspected facilities and all materials have been inspected and certified to be free of disease and suitable for exportation. All properties listed are typical characteristics and are not specifications. All suggestions and data are offered in good faith but without guarantee as conditions and methods of use of our products are beyond our control. All claims must be made within 30 days following the date of delivery. The prospective user must determine the suitability of our materials before adopting them on a commercial scale. Suggested uses of our products are not recommendations to use our products in violation of any patent or as a license under any patent of Rockland Immunochemicals, Inc. If you require a commercial license to use this material and do not have one, then return this material, unopened to: Rockland Inc., P.O. BOX 5199, Limerick, Pennsylvania, USA.