

Datasheet for 600-401-DU0**PST1 Antibody****Overview**

Description:	Anti-PST1 (RABBIT) Antibody - 600-401-DU0
Item No.:	600-401-DU0
Size:	100 µg
Applications:	ELISA, WB
Reactivity:	Yeast
Host Species:	Rabbit

Product Details

Background:	Protoplast secreted protein 1 (Pst1) is an anchored plasma membrane protein. Pst1 was previously identified as a protein secreted by yeast regenerating protoplasts, which suggests a role in cell wall construction. Pst1 is a protein with 444 amino acids and is attached to yeast cell wall via a glycosylphosphatidylinositol (GPI) anchor. Pst1 contains 15 potential N-linked glycosylation sites and is heavily glycosylated. It migrates at approximately 200 kDa on SDS-PAGE when produced in wild type <i>S. cerevisiae</i> . Our Pst1 protein (Catalog No. 95-151) was expressed in a genetically manipulated triple-mutant (TM) <i>S. cerevisiae</i> strain (Δoch1 Δmnn1 Δmnn4), which results in the production of sole Man8GlcNAc2 carbohydrate structures and Pst1 migration at approximately 100 kDa. When produced in the TM yeast, Pst1 can be recognized by several glycan-specific HIV-1 broadly neutralizing antibodies, including 2G12 and recently identified PGT antibodies. Among several heavily N-glycosylated TM yeast glycoproteins, Pst1 shows higher affinity for 2G12 and efficiently inhibits gp120 interactions with 2G12 and DC-SIGN, and it also blocks 2G12-mediated neutralization of HIV-1 pseudoviruses.
Synonyms:	Pst1 Antibody, HPF2, HPF2, YDR055W, D4214, YD9609.09, Cell wall mannoprotein PST1, Haze protective factor 2
Host Species:	Rabbit
Clonality:	Polyclonal
Format:	IgG

Target Details

Gene Name:	PST1
-------------------	------

Reactivity:	Yeast
Immunogen Type:	Conjugated Peptide
Immunogen:	Anti-Pst1 antibody was prepared from whole rabbit serum produced by repeated immunizations with a synthetic peptide from the N-terminus of yeast Pst1.
Purity/Specificity:	Anti-Pst1 Antibody was affinity purified from monospecific antiserum by immunoaffinity chromatography. Cross reactivity with Pst1 from other sources has not been determined.
Relevant Links:	<ul style="list-style-type: none">• UniProtKB - Q12355• GenelD - 851625• NCBI - Q12355

Application Details

Tested Applications:	ELISA, WB
Application Note:	Anti-Pst1 Antibody has been tested for use in ELISA and Western Blotting. Specific conditions for reactivity should be optimized by the end user. Expect a band at approximately 46 kDa in Western Blots of specific cell lysates and tissues.
Assay Dilutions:	All assays should be optimized by the user. Recommended dilutions (if any) may be listed below.
ELISA:	1:10,000
WB:	1 µg/mL

Formulation

Physical State:	Liquid (sterile filtered)
Concentration:	1 mg/mL by UV absorbance at 280 nm
Buffer:	0.01 M Sodium Phosphate, 0.25 M Sodium Chloride, pH 7.2
Preservative:	0.02% (w/v) Sodium Azide
Stabilizer:	None

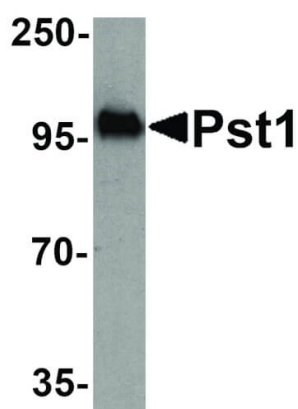
Shipping & Handling

Shipping Condition:	Dry Ice
----------------------------	---------

Storage Condition: Store vial at -20° C prior to opening. Aliquot contents and freeze at -20° C or below for extended storage. Avoid cycles of freezing and thawing. Centrifuge product if not completely clear after standing at room temperature. This product is stable for several weeks at 4° C as an undiluted liquid. Dilute only prior to immediate use.

Expiration: Expiration date is one (1) year from date of receipt.

Images



Western Blot

Western Blot of TM yeast Pst1 protein antibody. Lane 1: 50 ng Pst1 antibody. Load: 35 µg per lane. Primary antibody: Pst1 antibody at 1 µg/mL for overnight at 4°C. Secondary antibody: Peroxidase rabbit secondary antibody at 1:10,000 for 45 min at RT. Block: 5% BLOTTO overnight at 4°C. Predicted/Observed size: 46 kDa, 97 kDa for Pst1. Other band(s): Pst1 splice variants and isoforms.

Disclaimer

This product is for research use only and is not intended for therapeutic or diagnostic applications. Please contact a technical service representative for more information. All products of animal origin manufactured by Rockland Immunochemicals are derived from starting materials of North American origin. Collection was performed in United States Department of Agriculture (USDA) inspected facilities and all materials have been inspected and certified to be free of disease and suitable for exportation. All properties listed are typical characteristics and are not specifications. All suggestions and data are offered in good faith but without guarantee as conditions and methods of use of our products are beyond our control. All claims must be made within 30 days following the date of delivery. The prospective user must determine the suitability of our materials before adopting them on a commercial scale. Suggested uses of our products are not recommendations to use our products in violation of any patent or as a license under any patent of Rockland Immunochemicals, Inc. If you require a commercial license to use this material and do not have one, then return this material, unopened to: Rockland Inc., P.O. BOX 5199, Limerick, Pennsylvania, USA.