

Datasheet for 600-401-EE9**SCUBE1 Antibody****Overview**

Description:	Anti-SCUBE1 (RABBIT) Antibody - 600-401-EE9
Item No.:	600-401-EE9
Size:	100 µg
Applications:	ELISA, IF, IHC, WB
Reactivity:	Human
Host Species:	Rabbit

Product Details

Background:	SCUBE1 is an EGF-related protein with a CUB (C1s-like) domain that is expressed primarily in the developing gonad, nervous system, somites, surface ectoderm and limb buds. The N-terminal EGF-like repeats of SCUBE1 participate in the formation of adhesions in a Ca ²⁺ -dependent fashion. In contrast, the C-terminal cysteine-rich motifs and CUB domain can directly bind and antagonize bone morphogenic protein activity; genetic ablation of this region resulted in brain malformation in mice embryos, suggesting SCUBE1 plays a role in brain morphogenesis. SCUBE1 has also been implicated in early craniofacial development in mice.
Synonyms:	SCUBE1 Antibody, Signal peptide, CUB and EGF-like domain-containing protein 1
Host Species:	Rabbit
Clonality:	Polyclonal
Format:	IgG

Target Details

Gene Name:	SCUBE1
Reactivity:	Human
Immunogen Type:	Conjugated Peptide
Immunogen:	Anti-SCUBE1 antibody was prepared from whole rabbit serum produced by repeated immunizations with a 14 amino acid synthetic peptide near the internal region of human SCUBE1.

Purity/Specificity: Anti-SCUBE1 Antibody was affinity purified from monospecific antiserum by immunoaffinity chromatography. Cross reactivity with SCUBE1 from other sources has not been determined.

Relevant Links:

- [UniProtKB - Q8IWY4](#)
- [GeneID - 80274](#)
- [NCBI - NP_766638](#)

Application Details

Tested Applications: ELISA, IF, IHC, WB

Application Note: Anti-SCUBE1 Antibody has been tested for use in ELISA, Western Blotting, Immunocytochemistry and Immunofluorescence. Specific conditions for reactivity should be optimized by the end user. Expect a band at approximately 108 kDa in Western Blots of specific cell lysates and tissues.

Assay Dilutions: All assays should be optimized by the user. Recommended dilutions (if any) may be listed below.

ELISA: 1:10,000

IF: 20 µg/mL

WB: 1 µg/mL

Formulation

Physical State: Liquid (sterile filtered)

Concentration: 1 mg/mL by UV absorbance at 280 nm

Buffer: 0.01 M Sodium Phosphate, 0.25 M Sodium Chloride, pH 7.2

Preservative: 0.02% (w/v) Sodium Azide

Stabilizer: None

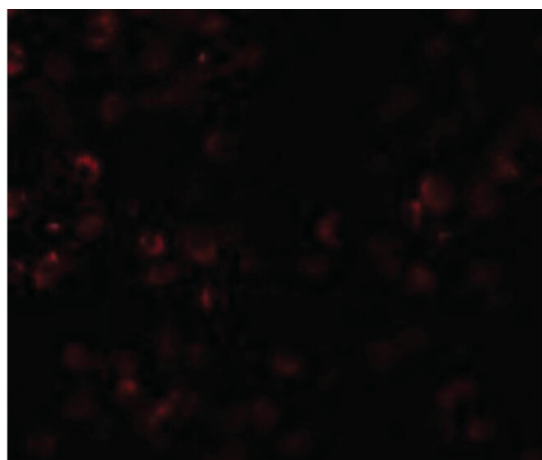
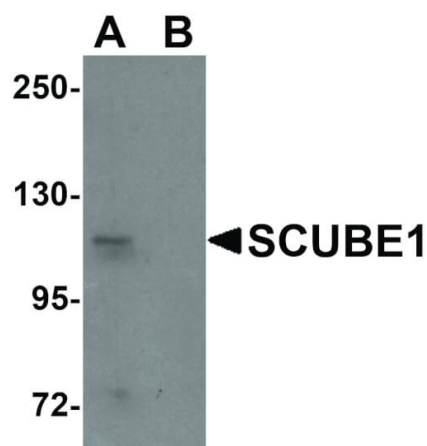
Shipping & Handling

Shipping Condition: Dry Ice

Storage Condition: Store vial at -20° C prior to opening. Aliquot contents and freeze at -20° C or below for extended storage. Avoid cycles of freezing and thawing. Centrifuge product if not completely clear after standing at room temperature. This product is stable for several weeks at 4° C as an undiluted liquid. Dilute only prior to immediate use.

Expiration: Expiration date is one (1) year from date of receipt.

Images



Immunohistochemistry

Immunocytochemistry of SCUBE1 antibody. Tissue: Daudi cells. Fixation: formalin fixed paraffin embedded. Antigen retrieval: not required. Primary antibody: SCUBE1 antibody at 20 µg/mL for 1 h at RT. Secondary antibody: Peroxidase rabbit secondary antibody at 1:10,000 for 45 min at RT. Localization: SCUBE1 is a peripheral membrane protein. Staining: SCUBE1 as precipitated blue signal with brown nuclear counterstain.

Western Blot

Western Blot of SCUBE1 antibody. Lane 1: Daudi cell lysate in the absence of blocking peptide. Lane 2: Daudi cell lysate in the presence of blocking peptide. Primary Antibody: with SCUBE1 antibody at 1 µg/mL. Secondary antibody: Peroxidase rabbit secondary antibody at 1:10,000 for 45 min at RT. Block: 5% BLOTTO overnight at 4°C. Predicted/Observed size: 108 kDa, 108 kDa for SCUBE1. Other band(s): SCUBE1 splice variants and isoforms.

Immunofluorescence Microscopy

Immunofluorescence Microscopy of SCUBE1 antibody. Tissue: Daudi cells. Fixation: 0.5% PFA. Antigen retrieval: not required. Primary antibody: SCUBE1 antibody at 20 µg/mL for 1 h at RT. Secondary antibody: Fluorescein rabbit secondary antibody at 1:10,000 for 45 min at RT. Localization: SCUBE1 is a peripheral membrane protein. Staining: SCUBE1 as red fluorescent signal.

Disclaimer

This product is for research use only and is not intended for therapeutic or diagnostic applications. Please contact a technical service representative for more information. All products of animal origin manufactured by Rockland Immunochemicals are derived from starting materials of North American origin. Collection was performed in United States Department of Agriculture (USDA) inspected facilities and all materials have been inspected and certified to be free of disease and suitable for exportation. All properties listed are typical characteristics and are not specifications. All suggestions and data are offered in good faith but without guarantee as conditions and methods of use of our products are beyond our control. All claims must be made within 30 days following the date of delivery. The prospective user must determine the suitability of our materials before adopting them on a commercial scale. Suggested uses of our products are not recommendations to use our products in violation of any patent or as a license under any patent of Rockland Immunochemicals, Inc. If you require a commercial license to use this material and do not have one, then return this material, unopened to: Rockland Inc., P.O. BOX 5199, Limerick, Pennsylvania, USA.