

Datasheet for 600-401-EZ3**TAB3 Antibody****Overview**

Description:	Anti-TAB3 (RABBIT) Antibody - 600-401-EZ3
Item No.:	600-401-EZ3
Size:	100 µg
Applications:	ELISA, IHC
Reactivity:	Human
Host Species:	Rabbit

Product Details

Background:	TAB3 functions in the NF-kappaB signal transduction pathway. It and the similar and functionally redundant protein TAB2, form a ternary complex with the protein kinase TAK1 and either TRAF2 or TRAF6 in response to stimulation with the pro-inflammatory cytokines TNF or IL-1. Subsequent TAK1 kinase activity triggers a signaling cascade leading to activation of the NF-kappaB transcription factor. Recent experiments have shown that TAB2 and the related protein TAB3 constitutively interact with the autophagy mediator Beclin-1; upon induction of autophagy, these proteins dissociate from Beclin-1 and bind TAK1. Overexpression of TAB2 and TAB3 inhibit autophagy, while their depletion triggers it, suggesting that TAB2 and TAB3 act as a control point for autophagy.
Synonyms:	TAB3 Antibody, NAP1, MAP3K7IP3, TGF-beta-activated kinase 1 and MAP3K7-binding protein 3, Mitogen-activated protein kinase kinase kinase 7-interacting protein 3, TAB-3
Host Species:	Rabbit
Clonality:	Polyclonal
Format:	IgG

Target Details

Gene Name:	TAB3
Reactivity:	Human
Immunogen Type:	Conjugated Peptide

Immunogen:	Anti-TAB3 antibody was prepared from whole rabbit serum produced by repeated immunizations with a 13 amino acid synthetic peptide near the N-terminus of human TAB3.
Purity/Specificity:	Anti-TAB3 Antibody was affinity purified from monospecific antiserum by immunoaffinity chromatography. TAB3 antibody is human specific. TAB3 antibody is predicted not to cross-react with other TAB proteins.
Relevant Links:	<ul style="list-style-type: none">• UniProtKB - Q8N5C8• GeneID - 257397• NCBI - NP_690000.3

Application Details

Tested Applications:	ELISA, IHC
Application Note:	Anti-TAB3 Antibody has been tested for use in ELISA, and Immunohistochemistry. Specific conditions for reactivity should be optimized by the end user. Expect a band at approximately 79 kDa in Western Blots of specific cell lysates and tissues.
Assay Dilutions:	All assays should be optimized by the user. Recommended dilutions (if any) may be listed below.
ELISA:	User Optimized
IHC:	5 µg/mL

Formulation

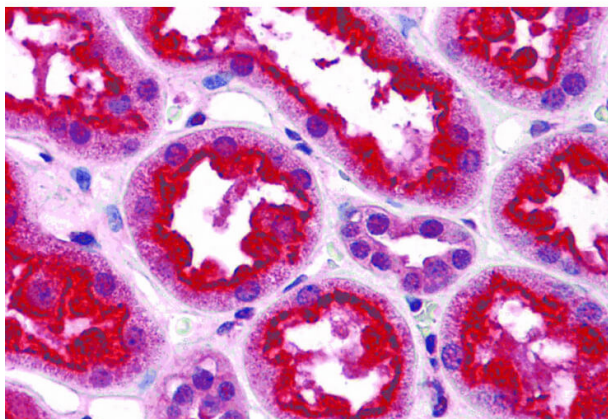
Physical State:	Liquid (sterile filtered)
Concentration:	1 mg/mL by UV absorbance at 280 nm
Buffer:	0.01 M Sodium Phosphate, 0.25 M Sodium Chloride, pH 7.2
Preservative:	0.02% (w/v) Sodium Azide
Stabilizer:	None

Shipping & Handling

Shipping Condition:	Dry Ice
Storage Condition:	Store vial at -20° C prior to opening. Aliquot contents and freeze at -20° C or below for extended storage. Avoid cycles of freezing and thawing. Centrifuge product if not completely clear after standing at room temperature. This product is stable for several weeks at 4° C as an undiluted liquid. Dilute only prior to immediate use.

Expiration: Expiration date is one (1) year from date of receipt.

Images



Immunohistochemistry

Immunohistochemistry of TAB3 antibody. Tissue: human kidney tissue. Fixation: formalin fixed paraffin embedded. Antigen retrieval: not required. Primary antibody: TAB3 antibody at 5 µg/mL for 1 h at RT. Secondary antibody: Peroxidase rabbit secondary antibody at 1:10,000 for 45 min at RT. Localization: TAB3 is located in the cytoplasmic vesicle and the cell membrane. Staining: TAB3 is stained with toluidine blue.

Disclaimer

This product is for research use only and is not intended for therapeutic or diagnostic applications. Please contact a technical service representative for more information. All products of animal origin manufactured by Rockland Immunochemicals are derived from starting materials of North American origin. Collection was performed in United States Department of Agriculture (USDA) inspected facilities and all materials have been inspected and certified to be free of disease and suitable for exportation. All properties listed are typical characteristics and are not specifications. All suggestions and data are offered in good faith but without guarantee as conditions and methods of use of our products are beyond our control. All claims must be made within 30 days following the date of delivery. The prospective user must determine the suitability of our materials before adopting them on a commercial scale. Suggested uses of our products are not recommendations to use our products in violation of any patent or as a license under any patent of Rockland Immunochemicals, Inc. If you require a commercial license to use this material and do not have one, then return this material, unopened to: Rockland Inc., P.O. BOX 5199, Limerick, Pennsylvania, USA.