

Datasheet for 600-401-GT6**Nrf2 Antibody****Overview**

Description:	Anti-Nrf2 (RABBIT) Antibody - 600-401-GT6
Item No.:	600-401-GT6
Size:	100 µg
Applications:	ELISA, WB
Reactivity:	Human, Mouse
Host Species:	Rabbit

Product Details

Background:	Anti-Nrf-2 antibody was designed, produced, and validated as part of the Joy Cappel Young Investigator Award (JCYIA). Nrf2 links the transcriptional modulation of key metabolic genes to cellular growth and development and has been implicated in the control of nuclear genes required for respiration, heme biosynthesis, and mitochondrial DNA transcription and replication. Nrf2 is localized in the cytoplasm and nucleus and ubiquitously expressed with the highest concentrations in the kidney, muscle, lung, heart, liver, and brain. Anti-Nrf2 antibody is useful for researchers interested in cellular growth, transcription factor, and cancer research.
Synonyms:	rabbit anti-Nrf2 antibody, Nrf 2, Nrf-2 Antibody, Nuclear factor erythroid 2-related factor 2, NF-E2-related factor 2, NFE2-related factor 2, Nuclear factor, erythroid derived 2, Nfe2l2, HEBP1
Host Species:	Rabbit
Clonality:	Polyclonal
Format:	IgG

Target Details

Gene Name:	Nfe2l2
Reactivity:	Human, Mouse
Immunogen Type:	Conjugated Peptide
Immunogen:	Anti-NRF-2 antibody was prepared from whole rabbit serum produced by repeated immunizations with a synthetic peptide corresponding near the c-term region.

Purity/Specificity: This affinity-purified antibody is directed against mouse Nrf2 protein. The product was affinity purified from monospecific antiserum by immunoaffinity purification. A BLAST analysis was used to suggest cross reactivity with Nrf2 proteins from human, mouse, rat and bovine based on 100% homology with the immunizing sequence. Reactivity against homologues from other sources is not known.

Relevant Links:

- [UniProtKB - Q60795](#)
- [NCBI - NP_035032.1](#)
- [GeneID - 18024](#)

Application Details

Tested Applications: ELISA, WB

Application Note: This affinity purified Nrf2 antibody has been tested for use in ELISA and by western blot. Specific conditions for reactivity should be optimized by the end user. Expect a band approximately 66.9 kDa in size corresponding to Nrf-2 proteins by western blotting in the appropriate cell lysate or extract.

Assay Dilutions: All assays should be optimized by the user. Recommended dilutions (if any) may be listed below.

ELISA: 5 ug/ml

WB: 1.0 ug/ml

Formulation

Physical State: Liquid (sterile filtered)

Concentration: 1.0 mg/ml by UV absorbance at 280 nm

Buffer: 0.02 M Potassium Phosphate, 0.15 M Sodium Chloride, pH 7.2

Preservative: 0.01% (w/v) Sodium Azide

Stabilizer: None

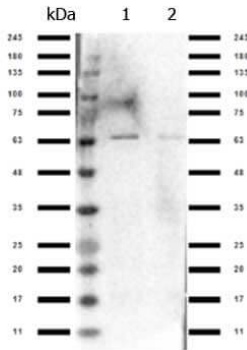
Shipping & Handling

Shipping Condition: Dry Ice

Storage Condition: Store vial at -20° C prior to opening. Aliquot contents and freeze at -20° C or below for extended storage. Avoid cycles of freezing and thawing. Centrifuge product if not completely clear after standing at room temperature. This product is stable for several weeks at 4° C as an undiluted liquid. Dilute only prior to immediate use.

Expiration: Expiration date is one (1) year from date of receipt.

Images



Western Blot

Western Blot of Rabbit Anti-Nrf2 antibody. Lane 1: HeLa Nuclear Extract (p/n W09-001-367). Lane 2: Jurkat whole cell (p/n W09-001-370). Load: 10 μ g per lane. Primary antibody: Nrf2 antibody at 1.0 μ g/ml for overnight at 4°C. Secondary antibody: Gt-a-Rb HRP (p/n 611-103-122) secondary antibody at 1:70,000 for 30 min at RT. Block: (p/n MB-070) overnight at 4°C. Predicted/Observed size: 63 kDa for Nrf2.

Disclaimer

This product is for research use only and is not intended for therapeutic or diagnostic applications. Please contact a technical service representative for more information. All products of animal origin manufactured by Rockland Immunochemicals are derived from starting materials of North American origin. Collection was performed in United States Department of Agriculture (USDA) inspected facilities and all materials have been inspected and certified to be free of disease and suitable for exportation. All properties listed are typical characteristics and are not specifications. All suggestions and data are offered in good faith but without guarantee as conditions and methods of use of our products are beyond our control. All claims must be made within 30 days following the date of delivery. The prospective user must determine the suitability of our materials before adopting them on a commercial scale. Suggested uses of our products are not recommendations to use our products in violation of any patent or as a license under any patent of Rockland Immunochemicals, Inc. If you require a commercial license to use this material and do not have one, then return this material, unopened to: Rockland Inc., P.O. BOX 5199, Limerick, Pennsylvania, USA.