

Datasheet for 600-401-P78**CCR6 Antibody****Overview**

Description:	Anti-CCR6 (RABBIT) Antibody - 600-401-P78
Item No.:	600-401-P78
Size:	100 µg
Applications:	WB
Reactivity:	Human, Mouse, Rat
Host Species:	Rabbit

Product Details

Background:	CCR6, also termed CKRL3, encodes a 369-amino acid polypeptide with greatest similarity to the family of alpha-chemokine-binding receptors. Unlike most chemokine receptor genes, it is encoded by more than 1 exon. Weakly expressed as a 4-kb transcript in spleen, lymph nodes, peripheral blood lymphocytes and appendix, CCR6 gene is located at 6q27. As the receptor for MIP-3-alpha, its activation leads to phospholipase C-dependent intracellular Ca(2+) mobilization. Additionally, CCR6 are markedly upregulated in psoriasis. This antibody is suitable for researchers interested in cell signaling and neuroscience research.
Synonyms:	Chemokine receptor-like 3,
Host Species:	Rabbit
Clonality:	Polyclonal
Format:	IgG

Target Details

Gene Name:	CCR6
Reactivity:	Human, Mouse, Rat
Immunogen Type:	Conjugated Peptide
Immunogen:	CCR6 affinity purified antibody was prepared from whole rabbit serum produced by repeated immunizations with a synthetic peptide corresponding to a sequence at the C-terminal of human CCR6.

Purity/Specificity: Anti-CCR6 antibody is directed against human CCR6 protein. The product was affinity purified from monospecific antiserum by immunoaffinity purification. A BLAST analysis was used to suggest reactivity with this protein from human, mouse, and rat based on homology for the immunogen sequence. Cross reactivity with CCR6 from other sources has not been determined.

Relevant Links:

- [UniProtKB - P51684](#)
- [GeneID - 1235](#)
- [NCBI - NP_004358.2](#)

Application Details

Tested Applications:	WB
Application Note:	Anti-CCR6 is tested for Western Blotting. Specific conditions for reactivity should be optimized by the end user. Expect a band approximately ~42.5 kDa corresponding to the appropriate cell lysate or extract.
Assay Dilutions:	All assays should be optimized by the user. Recommended dilutions (if any) may be listed below.
WB:	0.5µg/mL

Formulation

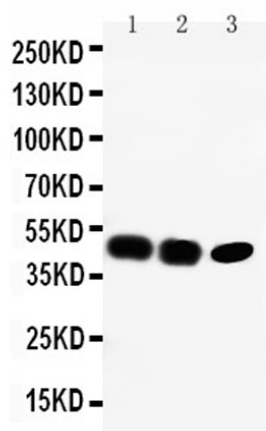
Physical State:	Lyophilized
Concentration:	0.5 mg/mL by UV absorbance at 280 nm
Buffer:	0.9mg NaCl, 0.2mg Na ₂ HPO ₄ , 0.05mg Na ₃
Preservative:	0.05mg Thimerosal
Stabilizer:	5mg BSA
Reconstitution Volume:	100 µL
Reconstitution Buffer:	Restore with deionized water (or equivalent)

Shipping & Handling

Shipping Condition:	Ambient
Storage Condition:	Store vial at 4° C prior to opening. Aliquot contents and freeze at -20° C or below for extended storage. Avoid cycles of freezing and thawing. Centrifuge product if not completely clear after standing at room temperature. This product is stable for several weeks at 4° C as an undiluted liquid. Dilute only prior to immediate use.

Expiration: Expiration date is one (1) year from date of receipt.

Images



Western Blot

Western blotting of Anti-CCR6 antibody.

Lane 1: Rat Liver Tissue Lysate, Lane 2: SW620 Cell Lysate,
Lane 3: CEM Cell Lysate.

Disclaimer

This product is for research use only and is not intended for therapeutic or diagnostic applications. Please contact a technical service representative for more information. All products of animal origin manufactured by Rockland Immunochemicals are derived from starting materials of North American origin. Collection was performed in United States Department of Agriculture (USDA) inspected facilities and all materials have been inspected and certified to be free of disease and suitable for exportation. All properties listed are typical characteristics and are not specifications. All suggestions and data are offered in good faith but without guarantee as conditions and methods of use of our products are beyond our control. All claims must be made within 30 days following the date of delivery. The prospective user must determine the suitability of our materials before adopting them on a commercial scale. Suggested uses of our products are not recommendations to use our products in violation of any patent or as a license under any patent of Rockland Immunochemicals, Inc. If you require a commercial license to use this material and do not have one, then return this material, unopened to: Rockland Inc., P.O. BOX 5199, Limerick, Pennsylvania, USA.