

Datasheet for 600-401-X37

Xin Actin-binding Repeat-containing Protein 1 Phospho S295 (XIRP1) Antibody

Overview

Description:	Anti-Xin Actin-binding Repeat-containing Protein 1 pS295 (XIRP1) (RABBIT) Antibody - 600-401-X37
Item No.:	600-401-X37
Size:	100 µL
Applications:	WB
Reactivity:	Mouse
Host Species:	Rabbit

Product Details

Background:	XIRP1 is a member of the Xin family of proteins, containing 16 Xin repeats. The intercalated disk protein Xin protects actin filaments from depolymerization, and is able to bundle actin filaments to interact with β -catenin, which is thought to stabilize actin-based cytoskeletons. The evolutionary emergence of the Xin paralogs may have played a key role in the development of heart chambers with complete endothelial and myocardial layers. Loss of mXin α (mouse Xin homolog) results in cardiac hypertrophy and cardiomyopathy. Phosphorylation of Ser295 is thought to play a key role in XIRP signaling. Xin Actin-Binding Repeat Containing Protein 1 pS295 Antibody is ideal for researchers interested in cell cycle research.
Synonyms:	XIRP1, Cardiomyopathy-associated protein 1, Xin actin-binding repeat-containing protein 1, Xirp1, Cmya1, Xin
Host Species:	Rabbit
Clonality:	Polyclonal
Format:	IgG

Target Details

Gene Name:	Xirp1
Reactivity:	Mouse
PTM Specificity:	Phosphorylation

Immunogen Type:	Conjugated Peptide
Immunogen:	Anti-Phospho-Ser295 Xin Actin-Binding Repeat Containing Protein 1 Antibody was produced in rabbits by repeated immunizations with a synthetic phospho-peptide corresponding to amino acid residues surrounding Ser295 of mouse Xin Actin-binding Repeat-containing Protein 1 conjugated to KLH.
Purity/Specificity:	Anti-Phospho-Ser295 Xin Actin-Binding Repeat Containing Protein 1 Antibody is directed against Xin Actin-Binding Repeat Containing Protein 1 phosphorylated at S295. The antibody was prepared from monospecific antiserum by immunoaffinity chromatography using phospho peptide coupled to agarose beads followed by solid phase adsorption(s) against non-phospho peptide and non-specific peptide to remove any unwanted reactivities. Assay by immunoelectrophoresis resulted in a single precipitin arc against anti-Rabbit Serum. This antibody is specific for phosphorylated Xin Actin-Binding Repeat Containing Protein 1. Minimal reactivity occurs against non-phosphorylated Xin Actin-Binding Repeat Containing Protein 1. Reactivity against Xin Actin-Binding Repeat Containing Protein 1 occurs from mouse sources. However, reactivity is also expected against canine, human, non-human primate, and rat based on 100% sequence homology.
Relevant Links:	<ul style="list-style-type: none">• UniProtKB - O70373• GenelD - 22437• NCBI - O70373

Application Details

Tested Applications:	WB
Application Note:	Anti-XIRP1pS295 Antibody has been tested by Western Blots and is specific for the ~150 kDa and ~250 kDa splice variants of XIRP1 phosphorylated at Ser295. Immunolabeling of the XIRP1 band is blocked by the treatment of the lysate with lambda phosphatase (30 minutes, 800 units / 1 mg protein). Specific conditions for reactivity should be optimized by the end user.
Assay Dilutions:	All assays should be optimized by the user. Recommended dilutions (if any) may be listed below.
ELISA:	1:10,000
WB:	1:1000

Formulation

Physical State:	Liquid (sterile filtered)
Buffer:	0.01 M HEPES, 0.15 M Sodium Chloride, pH 7.5
Preservative:	None

Stabilizer: 0.1 mg/ml Bovine Serum Albumin (BSA) - IgG and Protease free, 50% (v/v) Glycerol

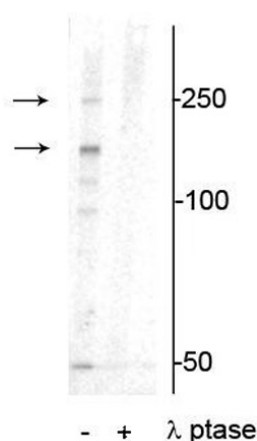
Shipping & Handling

Shipping Condition: Wet Ice

Storage Condition: Store vial at -20° C prior to opening in undiluted aliquots. Aliquot contents and freeze at -20° C or below for extended storage. Avoid cycles of freezing and thawing. Centrifuge product if not completely clear after standing at room temperature.

Expiration: Expiration date is one (1) year from date of receipt.

Images



Western Blot

Western blot of Anti-Xin Actin-binding Repeat-containing Protein 1 pS295 (XIRP1) Antibody.

Mouse heart lysate showing specific immunolabeling of the ~250 kDa and ~150 kDa splice variants of the XIRP1 protein phosphorylated at Ser295 in the first lane (-).

Phosphospecificity is shown in the second lane (+) where the immunolabeling is completely eliminated by blot treatment with lambda phosphatase (λ-Ptase, 1200 units for 30 minutes).

Disclaimer

This product is for research use only and is not intended for therapeutic or diagnostic applications. Please contact a technical service representative for more information. All products of animal origin manufactured by Rockland Immunochemicals are derived from starting materials of North American origin. Collection was performed in United States Department of Agriculture (USDA) inspected facilities and all materials have been inspected and certified to be free of disease and suitable for exportation. All properties listed are typical characteristics and are not specifications. All suggestions and data are offered in good faith but without guarantee as conditions and methods of use of our products are beyond our control. All claims must be made within 30 days following the date of delivery. The prospective user must determine the suitability of our materials before adopting them on a commercial scale. Suggested uses of our products are not recommendations to use our products in violation of any patent or as a license under any patent of Rockland Immunochemicals, Inc. If you require a commercial license to use this material and do not have one, then return this material, unopened to: Rockland Inc., P.O. BOX 5199, Limerick, Pennsylvania, USA.