

Datasheet for 600-401-Y26**APAF1 Antibody****Overview**

Description:	Anti-APAF1 (RABBIT) Antibody - 600-401-Y26
Item No.:	600-401-Y26
Size:	100 µg
Applications:	ELISA, IF, IHC, WB
Reactivity:	Human, Mouse, Rat
Host Species:	Rabbit

Product Details

Background:	Apoptosis is related to many diseases and induced by a family of cell death receptors and their ligands. Cell death signals are transduced by death domain containing adapter molecules and members of the caspase family of proteases. The mammalian homologues of the key cell death gene CED-4 in <i>C. elegans</i> has been identified recently from human and mouse and designated Apaf1 (for apoptosis protease-activating factor 1). Apaf1 binds to cytochrome c (Apaf-2) and caspase-9 (Apaf-3), which leads to caspase-9 activation. Activated caspase-9 in turn cleaves and activates caspase-3 that is one of the key proteases, being responsible for the proteolytic cleavage of many key proteins in apoptosis. Apaf1 can also associate with caspase-4 and caspase-8. Apaf1 is ubiquitously expressed in human tissues.
Synonyms:	Apaf1 Antibody, CED4, APAF-1, KIAA0413, Apoptotic protease-activating factor 1
Host Species:	Rabbit
Clonality:	Polyclonal
Format:	IgG

Target Details

Gene Name:	APAF1
Reactivity:	Human, Mouse, Rat
Immunogen Type:	Conjugated Peptide

Immunogen:	Anti-Apaf1 antibody was prepared from whole rabbit serum produced by repeated immunizations with a peptide corresponding to amino acids near the N-terminus of human Apaf1. The sequences of the immunogenic peptide are identical between human and mouse.
Purity/Specificity:	Anti-Apaf1 Antibody was affinity purified from monospecific antiserum by immunoaffinity chromatography. Cross reactivity with Apaf1 from other sources has not been determined.
Relevant Links:	<ul style="list-style-type: none">• UniProtKB - O14727• GeneID - 317• NCBI - AAC51678

Application Details

Tested Applications:	ELISA, IF, IHC, WB
Application Note:	Anti-Apaf1 Antibody has been tested for use in ELISA, Western Blotting, Immunohistochemistry and Immunofluorescence. Specific conditions for reactivity should be optimized by the end user. Expect a band at approximately 142 kDa in Western Blots of specific cell lysates and tissues.
Assay Dilutions:	All assays should be optimized by the user. Recommended dilutions (if any) may be listed below.
ELISA:	1:10,000
IF:	10 µg/mL
IHC:	1 µg/mL
WB:	1 µg/mL

Formulation

Physical State:	Liquid (sterile filtered)
Concentration:	1 mg/mL by UV absorbance at 280 nm
Buffer:	0.01 M Sodium Phosphate, 0.25 M Sodium Chloride, pH 7.2
Preservative:	0.02% (w/v) Sodium Azide
Stabilizer:	None

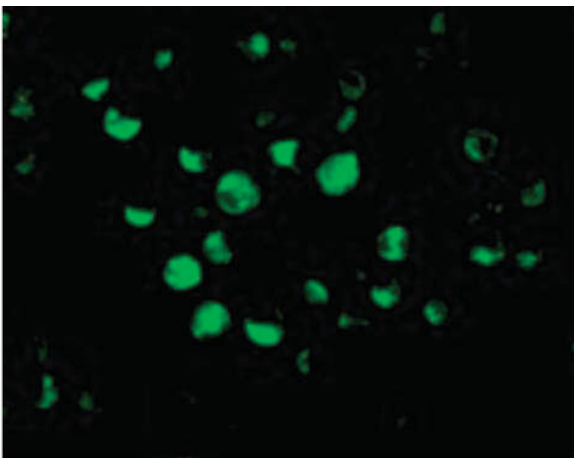
Shipping & Handling

Shipping Condition:	Dry Ice
----------------------------	---------

Storage Condition: Store vial at -20° C prior to opening. Aliquot contents and freeze at -20° C or below for extended storage. Avoid cycles of freezing and thawing. Centrifuge product if not completely clear after standing at room temperature. This product is stable for several weeks at 4° C as an undiluted liquid. Dilute only prior to immediate use.

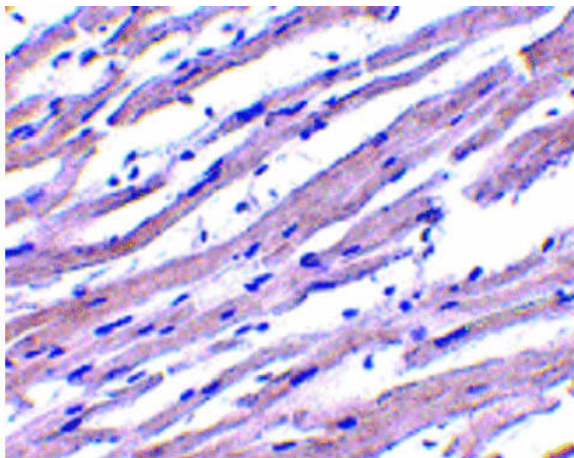
Expiration: Expiration date is one (1) year from date of receipt.

Images



Immunofluorescence Microscopy

Immunofluorescence Microscopy of Apaf1 antibody. Tissue: K562 cells. Fixation: 0.5% PFA. Antigen retrieval: not required. Primary antibody: Apaf1 antibody at 10 µg/mL for 1 h at RT. Secondary antibody: Fluorescein rabbit secondary antibody at 1:10,000 for 45 min at RT. Localization: Apaf1 is cytoplasmic. Staining: Apaf1 as green fluorescent signal.



Immunohistochemistry

Immunohistochemistry of Apaf1 antibody. Tissue: Human heart tissue. Fixation: formalin fixed paraffin embedded. Antigen retrieval: not required. Primary antibody: Apaf1 antibody at 1 µg/mL for 1 h at RT. Secondary antibody: Peroxidase rabbit secondary antibody at 1:10,000 for 45 min at RT. Localization: Apaf1 is cytoplasmic. Staining: Apaf1 as precipitated pink signal with hematoxylin blue nuclear counterstain.

Disclaimer

This product is for research use only and is not intended for therapeutic or diagnostic applications. Please contact a technical service representative for more information. All products of animal origin manufactured by Rockland Immunochemicals are derived from starting materials of North American origin. Collection was performed in United States Department of Agriculture (USDA) inspected facilities and all materials have been inspected and certified to be free of disease and suitable for exportation. All properties listed are typical characteristics and are not specifications. All suggestions and data are offered in good faith but without guarantee as conditions and methods of use of our products are beyond our control. All claims must be made within 30 days following the date of delivery. The prospective user must determine the suitability of our materials before adopting them on a commercial scale. Suggested uses of our products are not recommendations to use our products in violation of any patent or as a license under any patent of Rockland Immunochemicals, Inc. If you require a commercial license to use this material and do not have one, then return this material, unopened to: Rockland Inc., P.O. BOX 5199, Limerick, Pennsylvania, USA.