

Datasheet for 600-405-200**GST Antibody Alkaline Phosphatase Conjugated****Overview**

Description:	Anti-GST (RABBIT) Antibody Alkaline Phosphatase Conjugated - 600-405-200
Item No.:	600-405-200
Size:	100 µg
Applications:	ELISA
Reactivity:	GST-Tag
Host Species:	Rabbit

Product Details

Background:	GST (Glutathione-S-Transferase) is a protein expression tag commonly used in molecular biology. Anti-GST will react with synthetic construct present in most known GST containing cloning or expression vectors. GST is responsible for the conjugation of reduced glutathione to a wide number of exogenous and endogenous hydrophobic electrophiles. The amino acid sequence GST is highly conserved in most organisms including mammals. GST exists as a 26 kDa homodimer.
Synonyms:	rabbit anti-GST antibody alkaline phosphatase conjugation, alk phos conjugated rabbit anti-GST antibody, Glutathione-S-Transferase
Host Species:	Rabbit
Conjugate:	Alkaline Phosphatase (AP)
Clonality:	Polyclonal
Format:	IgG

Target Details

Reactivity:	GST-Tag
Immunogen Type:	Native Protein
Immunogen:	The immunogen is full length GST isolated from <i>Schistosoma japonicum</i> .

Purity/Specificity:	This product was prepared from monospecific antiserum by immunoaffinity chromatography using GST coupled to agarose beads followed by solid phase adsorption(s) to remove any unwanted reactivities and extensive dialysis against the buffer stated above. Assay by immunoelectrophoresis resulted in a single precipitin arc against anti-Rabbit Serum, anti-Alkaline Phosphatase, as well as purified and partially purified Glutathione-S-Transferase [Schistosoma japonicum]. Cross reactivity against Glutathione-S-Transferase from other sources may occur but has not been specifically determined.
----------------------------	--

Application Details

Tested Applications:	ELISA
Application Note:	Anti-Glutathione-S-Transferase Alkaline Phosphatase Conjugate has been tested by ELISA and is suitable for western blotting and immunohistochemistry as well as other antibody based assays requiring lot-to-lot consistency.
Assay Dilutions:	All assays should be optimized by the user. Recommended dilutions (if any) may be listed below.
ELISA:	1:2,000-1:10,000
IHC:	1:200-1:1,000
WB:	1:500-1:2,500

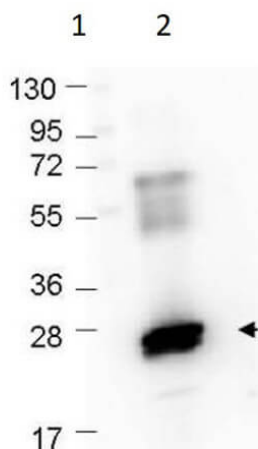
Formulation

Physical State:	Liquid (sterile filtered)
Concentration:	0.5 mg/mL by UV absorbance at 280 nm
Buffer:	0.05 M Tris Chloride, 0.15M Sodium Chloride, 0.001M Magnesium Chloride, 0.0001M Zinc Chloride, 50% (v/v) Glycerol; pH 8.0
Preservative:	0.01% (w/v) Sodium Azide
Stabilizer:	10 mg/mL Bovine Serum Albumin (BSA) - Immunoglobulin and Protease free

Shipping & Handling

Shipping Condition:	Wet Ice
Storage Condition:	Store vial at 4° C before opening. DO NOT FREEZE. This product is stable at 4° C as an undiluted liquid. Dilute only prior to immediate use. Freezing alkaline phosphatase conjugates will result in a substantial loss of enzymatic activity.
Expiration:	Expiration date is one (1) year from date of receipt.

Images



Western Blot

Western Blot of Rabbit Anti-GST Antibody. Lane 1: MW markers. Lane 2: recombinant GST protein (p/n 000-001-200). Load: 0.25 μ g. Primary Antibody: Anti-GST at 1:1000 at room temperature for 30 min. Secondary Antibody: HRP-conjugated Goat-Anti-Rabbit (p/n 611-103-122) secondary antibody was used at 1:40,000 in blocking buffer (p/n MB-070). Blocking: 1% BSA-TTBS (p/n MB-013, diluted to 1X) overnight at 4°C.

Disclaimer

This product is for research use only and is not intended for therapeutic or diagnostic applications. Please contact a technical service representative for more information. All products of animal origin manufactured by Rockland Immunochemicals are derived from starting materials of North American origin. Collection was performed in United States Department of Agriculture (USDA) inspected facilities and all materials have been inspected and certified to be free of disease and suitable for exportation. All properties listed are typical characteristics and are not specifications. All suggestions and data are offered in good faith but without guarantee as conditions and methods of use of our products are beyond our control. All claims must be made within 30 days following the date of delivery. The prospective user must determine the suitability of our materials before adopting them on a commercial scale. Suggested uses of our products are not recommendations to use our products in violation of any patent or as a license under any patent of Rockland Immunochemicals, Inc. If you require a commercial license to use this material and do not have one, then return this material, unopened to: Rockland Inc., P.O. BOX 5199, Limerick, Pennsylvania, USA.