

## Datasheet for 600-406-379

**RFP Antibody Biotin Conjugated Pre-adsorbed****Overview**

<b>Description:</b>	Anti-RFP (RABBIT) Antibody Biotin Conjugated (Min X Hu Ms & Rt Serum Proteins) - 600-406-379
<b>Item No.:</b>	600-406-379
<b>Size:</b>	100 µg
<b>Applications:</b>	ELISA, WB, FC, IF, IHC, Multiplex
<b>Reactivity:</b>	RFP, rRFP
<b>Host Species:</b>	Rabbit

**Product Details**

<b>Background:</b>	Fluorescent proteins such as Discosoma Red Fluorescent Protein (DsRed) from sea anemone Discosoma sp. mushroom or green fluorescent protein (GFP) from Aequorea victoria jellyfish are widely used in research practice. Fusion RFP and GFP commonly serve as marker for gene expression and protein localization. As DsRed and GFP share only 19% identity, therefore, in general, anti-GFP antibodies do not recognize DsRed protein and vice versa. Structurally, Discosoma red fluorescent protein is similar to Aequorea green fluorescent protein in terms of its overall fold (a $\beta$ -can) and chromophore-formation chemistry. However, Discosoma red fluorescent protein undergoes an additional step in the chromophore maturation and obligates tetrameric structure. Rockland offers many controls, monoclonal, and polyclonal antibodies for RFP.
<b>Synonyms:</b>	rabbit anti-RFP antibody biotin conjugation, biotin conjugated rabbit anti-RFP antibody, DsRed, rDsRed, Discosoma sp. Red Fluorescent Protein, Red fluorescent protein drFP583
<b>Host Species:</b>	Rabbit
<b>Conjugate:</b>	Biotin
<b>Clonality:</b>	Polyclonal
<b>Format:</b>	IgG
<b>F/P Ratio:</b>	10-20

**Target Details**

<b>Gene Name:</b>	DsRed
-------------------	-------

<b>Reactivity:</b>	RFP, rRFP
<b>Immunogen Type:</b>	Recombinant Protein
<b>Immunogen:</b>	The immunogen is a Red Fluorescent Protein (RFP) fusion protein corresponding to the full length amino acid sequence (234aa) derived from the mushroom polyp coral <i>Discosoma</i> .
<b>Purity/Specificity:</b>	This product was prepared from monospecific antiserum by immunoaffinity chromatography using Red Fluorescent Protein ( <i>Discosoma</i> ) coupled to agarose beads followed by solid phase adsorption(s) to remove any unwanted reactivities. Expect reactivity against RFP and its variants: mCherry, tdTomato, mBanana, mOrange, mPlum, mOrange and mStrawberry. Assay by immunoelectrophoresis resulted in a single precipitin arc against anti-biotin, anti-Rabbit Serum, and purified and partially purified Red Fluorescent Protein ( <i>Discosoma</i> ). No reaction was observed against Human, Mouse or Rat serum proteins. ELISA was used to confirm specificity at less than 0.1% of target signal.
<b>Relevant Links:</b>	<ul style="list-style-type: none"><li><a href="#">UniProtKB - Q9U6Y8</a></li></ul>

## Application Details

<b>Tested Applications:</b>	ELISA, WB
<b>Suggested Applications:</b>	FC, IF, IHC, Multiplex (Based on references)
<b>Application Note:</b>	Polyclonal anti-RFP is designed to detect RFP and its variants. This rabbit anti-RFP Antibody Biotin Conjugated antibody has been tested by ELISA and Western blot. This product can be used to detect RFP by ELISA (sandwich or capture) for the direct binding of antigen. Biotin conjugated polyclonal anti-RFP used in a sandwich ELISA with unconjugated anti-RFP is well suited to titrate RFP in solution. The detection antibody conjugated to biotin is subsequently reacted with streptavidin conjugated HRP (code # S000-03). Optimal titers for applications should be determined by the researcher.
<b>Assay Dilutions:</b>	All assays should be optimized by the user. Recommended dilutions (if any) may be listed below.
<b>ELISA:</b>	1:10,000 - 1:80,000
<b>IHC:</b>	1:1,000 - 1:5,000
<b>WB:</b>	1:2,000 - 1:10,000

## Formulation

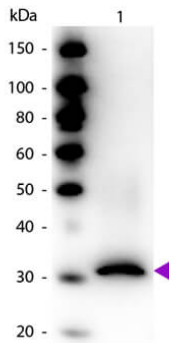
<b>Physical State:</b>	Lyophilized
<b>Concentration:</b>	1.0 mg/mL by UV absorbance at 280 nm
<b>Buffer:</b>	0.02 M Potassium Phosphate, 0.15 M Sodium Chloride, pH 7.2

<b>Preservative:</b>	0.01% (w/v) Sodium Azide
<b>Stabilizer:</b>	10 mg/mL Bovine Serum Albumin (BSA) - Immunoglobulin and Protease free
<b>Reconstitution Volume:</b>	100 $\mu$ L
<b>Reconstitution Buffer:</b>	Restore with deionized water (or equivalent)

## Shipping & Handling

<b>Shipping Condition:</b>	Ambient
<b>Storage Condition:</b>	Store vial at 4° C prior to restoration. For extended storage aliquot contents and freeze at -20° C or below. Avoid cycles of freezing and thawing. Centrifuge product if not completely clear after standing at room temperature. This product is stable for several weeks at 4° C as an undiluted liquid. Dilute only prior to immediate use.
<b>Expiration:</b>	Expiration date is one (1) year from date of receipt.

## Images



### Western Blot

Western blot of Biotin conjugated Rabbit Anti-RFP Pre-adsorbed antibody. Lane 1: RFP. Load: 50ng per lane. Primary antibody: Biotin conjugated Rabbit Anti-RFP at 1:1,000 for 60 min at RT. Secondary antibody: Peroxidase streptavidin (p/n S000-03) at 1:40,000 for 30 min at RT. Block: MB-070 for 30 min at RT. Predicted\Observed size: ~27kDa, ~30kDa for RFP.

## References

- Derman RC et al. Role of nucleus accumbens D1-type medium spiny neurons in the expression and extinction of sign-tracking. *Behav Brain Res.* (2024)
- Benevento M et al. A brainstem-hypothalamus neuronal circuit reduces feeding upon heat exposure. *Nature.* (2024)
- Wang J et al. IFN- $\gamma$ -STAT1-mediated CD8<sup>+</sup> T-cell-neural stem cell cross talk controls astroglialogenesis after spinal cord injury. *Inflamm Regen.* (2023)
- Filliol A et al. Opposing roles of hepatic stellate cell subpopulations in hepatocarcinogenesis. *Nature.* (2022)
- Shields AK et al. Activation of VTA GABA neurons disrupts reward seeking by altering temporal processing. *Behav Brain Res.* (2021)
- Derman RC et al. Effects of hM4Di activation in CamKII basolateral amygdala neurons and CNO treatment on sensory-specific vs. general PIT: refining PIT circuits and considerations for using CNO. *Psychopharmacology (Berl).* (2020)
- Drost N et al. The Amyloid-beta rich CNS environment alters myeloid cell functionality independent of their origin. *Sci Rep.* (2020)
- Lee S et al. Combinatorial Atoh1 and Gfi1 induction enhances hair cell regeneration in the adult cochlea. *Sci Rep.* (2020)
- Herndler-Brandstetter D, Ishigame H, Shinnakasu R, et al. KLRG1<sup>+</sup> Effector CD8<sup>+</sup> T Cells Lose KLRG1, Differentiate into All Memory T Cell Lineages, and Convey Enhanced Protective Immunity. *Immunity* (2018)
- Ide N et al. In vivo evidence for an interplay of FGF23/Klotho/PTH axis on the phosphate handling in renal proximal tubules. *Am J Physiol Renal Physiol.* (2018)
- Kelly SM et al. Radial glial lineage progression and differential intermediate progenitor amplification underlie striatal compartments and circuit organization. *Neuron.* (2018)
- Ide N et al. In vivo evidence for a limited role of proximal tubular Klotho in renal phosphate handling. *Kidney Int.* (2016)
- Amano et al. Conditional Deletion of Indian Hedgehog in Limb Mesenchyme Results in Complete Loss of Growth Plate Formation but Allows Mature Osteoblast Differentiation. *Journal of Bone and Mineral Research* (2015)

## Disclaimer

This product is for research use only and is not intended for therapeutic or diagnostic applications. Please contact a technical service representative for more information. All products of animal origin manufactured by Rockland Immunochemicals are derived from starting materials of North American origin. Collection was performed in United States Department of Agriculture (USDA) inspected facilities and all materials have been inspected and certified to be free of disease and suitable for exportation. All properties listed are typical characteristics and are not specifications. All suggestions and data are offered in good faith but without guarantee as conditions and methods of use of our products are beyond our control. All claims must be made within 30 days following the date of delivery. The prospective user must determine the suitability of our materials before adopting them on a commercial scale. Suggested uses of our products are not recommendations to use our products in violation of any patent or as a license under any patent of Rockland Immunochemicals, Inc. If you require a commercial license to use this material and do not have one, then return this material, unopened to: Rockland Inc., P.O. BOX 5199, Limerick, Pennsylvania, USA.