

## Datasheet for 600-445-382

**6X His Tag Antibody DyLight™ 800 Conjugated****Overview**

<b>Description:</b>	Anti-6X His Epitope Tag (RABBIT) Antibody DyLight™ 800 Conjugated - 600-445-382
<b>Item No.:</b>	600-445-382
<b>Size:</b>	100 µg
<b>Applications:</b>	WB
<b>Reactivity:</b>	His-Tag
<b>Host Species:</b>	Rabbit

**Product Details**

<b>Background:</b>	Epitope tags are short peptide sequences that are easily recognized by tag-specific antibodies. Due to their small size, epitope tags do not affect the tagged protein's biochemical properties. Most often sequences encoding the epitope tag are included with target DNA at the time of cloning to produce fusion proteins containing the epitope tag sequence. This allows anti-epitope tag antibodies to serve as universal detection reagents for any tag containing protein produced by recombinant means. This means that anti-epitope tag antibodies are a useful alternative to generating specific antibodies to identify, immunoprecipitate or immunoaffinity purify a recombinant protein. The anti-epitope tag antibody is usually functional in a variety of antibody-dependent experimental procedures. Expression vectors producing epitope tag fusion proteins are available for a variety of host expression systems including bacteria, yeast, insect and mammalian cells. Rockland Immunochemicals produces anti-epitope tag antibodies against many common epitope tags including Myc, GST, GFP, 6X His, MBP, FLAG and HA. Rockland Immunochemicals also produces antibodies to other tags including FITC, Rhodamine (TRITC), DNP and biotin.
<b>Synonyms:</b>	rabbit anti-6X HIS EPITOPE TAG Antibody DyLight™800 conjugation, DyLight™ 800 conjugated rabbit anti-6X HIS EPITOPE TAG Antibody, anti-HIS, HIS Antibody, 6X His Tag Antibody, HHHHHH epitope tag antibody
<b>Host Species:</b>	Rabbit
<b>Conjugate:</b>	DyLight™ 800
<b>Clonality:</b>	Polyclonal
<b>Format:</b>	IgG
<b>F/P Ratio:</b>	1.3

## Target Details

<b>Reactivity:</b>	His-Tag
<b>Immunogen Type:</b>	Conjugated Peptide
<b>Immunogen:</b>	This affinity purified antibody was prepared from whole rabbit serum produced by repeated immunizations with a synthetic peptide corresponding to the 6X HIS epitope tag (H-H-H-H-H-H) conjugated to KLH using maleimide.
<b>Purity/Specificity:</b>	This affinity purified antibody is directed against the 6X HIS epitope tag and is useful in determining its presence in over expressed proteins in various assays. The antibody recognizes the 6X HIS epitope tag (His-His-His-His-His-His) fused to either the amino- or carboxy- termini of targeted proteins in transfected or transformed cells.
<b>Relevant Links:</b>	<ul style="list-style-type: none"><li>• <a href="tel:600-445-382">600-445-382</a> SDS</li></ul>

## Application Details

<b>Tested Applications:</b>	WB
<b>Application Note:</b>	Anti-6X His is optimally suited for monitoring expression of His-tagged fusion proteins. As such, anti-6X His/6X His can be used to identify fusion proteins containing the 6X His epitope. The antibody recognizes the His tag fused either to the amino- or carboxy- termini of targeted proteins. This antibody has been tested by ELISA and western blotting against both the immunizing peptide and His-containing recombinant proteins. Although not tested, this antibody is likely functional for immunoprecipitation and immunocytochemistry. The emission spectra for this DyLight™ conjugate match the principle output wavelengths of most common fluorescence instrumentation.
<b>Assay Dilutions:</b>	All assays should be optimized by the user. Recommended dilutions (if any) may be listed below.
<b>FLISA:</b>	>1:20,000
<b>IF:</b>	>1:5,000
<b>WB:</b>	1:10,000 - 1:25,000

## Formulation

<b>Physical State:</b>	Lyophilized
<b>Concentration:</b>	1.0 mg/mL by UV absorbance at 280 nm
<b>Buffer:</b>	0.02 M Potassium Phosphate, 0.15 M Sodium Chloride, pH 7.2
<b>Preservative:</b>	0.01% (w/v) Sodium Azide

<b>Stabilizer:</b>	10 mg/mL Bovine Serum Albumin (BSA) - Immunoglobulin and Protease free
<b>Reconstitution Volume:</b>	100 $\mu$ L
<b>Reconstitution Buffer:</b>	Restore with deionized water (or equivalent)







## Shipping & Handling

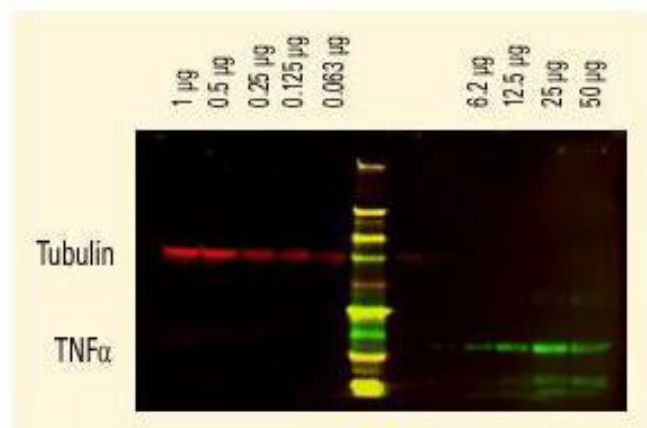
<b>Shipping Condition:</b>	Ambient
<b>Storage Condition:</b>	Store vial at 4° C prior to restoration. For extended storage aliquot contents and freeze at -20° C or below. Avoid cycles of freezing and thawing. Centrifuge product if not completely clear after standing at room temperature. This product is stable for several weeks at 4° C as an undiluted liquid. Dilute only prior to immediate use.
<b>Expiration:</b>	Expiration date is one (1) year from date of receipt.

## Images

### Diagram

Properties of DyLight™ Conjugates.

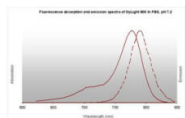
Emission	Color	DyLight™ Dye	Ex/Em (nm)	$\epsilon$ (M <sup>-1</sup> cm <sup>-1</sup> )	Similar Dyes
Blue		405	400/420	30,000	Alexa™ 405, Cascade Blue
Green		488	493/518	70,000	Alexa™ 488, Cy2®, FITC
Yellow		549	550/568	150,000	Alexa™ 546, Alexa 555, Cy3®, TRITC
Red		649	646/674	250,000	Alexa™ 647, Cy5®
Near Infrared		680	682/715	140,000	Alexa™ 680, Cy5.5®, IRDye™ 700
Infrared		800	770/794	270,000	IRDye™ 800



### Western Blot

DyLight™ dyes can be used for two-color Western Blot detection with low background and high signal. Anti-tubulin was detected using a DyLight™ 680 conjugate. Anti-TNFα was detected using a DyLight™ 800 conjugate. The image was captured using the Odyssey® Infrared Imaging System developed by LI-COR.

### Diagram



## Disclaimer

This product is for research use only and is not intended for therapeutic or diagnostic applications. Please contact a technical service representative for more information. All products of animal origin manufactured by Rockland Immunochemicals are derived from starting materials of North American origin. Collection was performed in United States Department of Agriculture (USDA) inspected facilities and all materials have been inspected and certified to be free of disease and suitable for exportation. All properties listed are typical characteristics and are not specifications. All suggestions and data are offered in good faith but without guarantee as conditions and methods of use of our products are beyond our control. All claims must be made within 30 days following the date of delivery. The prospective user must determine the suitability of our materials before adopting them on a commercial scale. Suggested uses of our products are not recommendations to use our products in violation of any patent or as a license under any patent of Rockland Immunochemicals, Inc. If you require a commercial license to use this material and do not have one, then return this material, unopened to: Rockland Inc., P.O. BOX 5199, Limerick, Pennsylvania, USA.