

Datasheet for 612-401-E21

Rabphilin 3A Antibody

Overview

Description:	Anti-Rabphilin 3A (RABBIT) Antibody - 612-401-E21
Item No.:	612-401-E21
Size:	100 µL
Applications:	WB
Reactivity:	Rat
Host Species:	Rabbit

Product Details

Background:	Rabphilin 3A antibody detects Rab 3A which is a peripheral membrane protein that binds Ca ²⁺ and phospholipids and is attached to synaptic vesicle membranes. The expression of rabphilin 3A is reduced in an animal model of Huntington's disease. Rabphilin can be phosphorylated at Ser234 by both CAM kinase II and PKA and this phosphorylation has been suggested to regulate neuronal activity during development in a synapse-specific manner. Anti-Rabphilin 3A antibody is ideal for investigators involved in Signal Transduction, Cell Signaling, and Neuroscience research.
Synonyms:	Rabphilin 3A Homolog, Rabphilin-3A, RP3A, Rph3A, Exophilin 1, Exophilin-1
Host Species:	Rabbit
Clonality:	Polyclonal
Format:	IgG

Target Details

Gene Name:	Rph3a
Reactivity:	Rat
Immunogen Type:	Conjugated Peptide
Immunogen:	Anti-Rabphilin 3A Antibody was produced in rabbit by repeated immunizations with synthetic peptide corresponding to amino acid residues from the C-terminal region conjugated to KLH.

Purity/Specificity: Anti-Rabphilin 3A antibody is directed against rat rabphilin 3A proteins. Anti-Rabphilin 3A antibodies are affinity purified from monospecific antiserum by immunoaffinity purification. Cross reactivity with Rab 3A from other species has not been determined, however, the sequence of the immunogen shows 100% identity to mouse, human, bovine, canine, and non-human primates, therefore, cross reactivity is expected.

Relevant Links:

- [UniProtKB - P47709](#)
- [GeneID - 171039](#)
- [UniProtKB - P47709.1](#)

Application Details

Tested Applications: WB

Application Note: Anti-Rabphilin 3A (Rabbit) antibody is tested for use in ELISA and in western blotting. Expect a band of approximately 82 kDa in size corresponding to rabphilin 3A protein in the appropriate cell lysate or extract. Researchers should determine optimal titers for applications that are not stated below.

Assay Dilutions: All assays should be optimized by the user. Recommended dilutions (if any) may be listed below.

WB: 1:1000

Formulation

Physical State: Liquid

Buffer: 0.01 M HEPES, 0.15 M Sodium Chloride, pH 7.5

Stabilizer: 0.1 mg/ml Bovine Serum Albumin (BSA) - IgG and Protease free, 50% (v/v) Glycerol

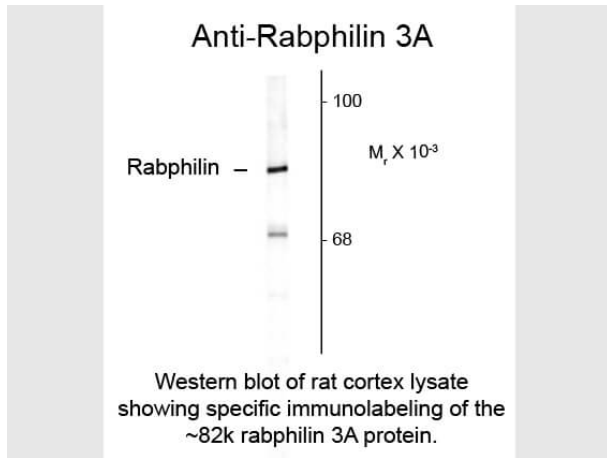
Shipping & Handling

Shipping Condition: Dry Ice

Storage Condition: Store vial at -20° C prior to opening. Aliquot contents and freeze at -20° C or below for extended storage. Avoid cycles of freezing and thawing. Centrifuge product if not completely clear after standing at room temperature. This product is stable for several weeks at 4° C as an undiluted liquid. Dilute only prior to immediate use.

Expiration: Expiration date is one (1) year from date of receipt.

Images



Western Blot

Western Blot of Rabbit anti-Rabphilin 3A antibody. Lane 1: rat cortex lysate. Lane 2: none. Load: 10 μ g per lane. Primary antibody: Rabphilin 3A antibody at 1:1,000 for overnight at 4°C. Secondary antibody: IRDye800™ rabbit secondary antibody at 1:10,000 for 45 min at RT. Block: 5% BLOTTO overnight at 4°C. Predicted/Observed size: 82 kDa for Rabphilin 3A. Other band(s): Rabphilin 3A splice variants and isoforms.

Disclaimer

This product is for research use only and is not intended for therapeutic or diagnostic applications. Please contact a technical service representative for more information. All products of animal origin manufactured by Rockland Immunochemicals are derived from starting materials of North American origin. Collection was performed in United States Department of Agriculture (USDA) inspected facilities and all materials have been inspected and certified to be free of disease and suitable for exportation. All properties listed are typical characteristics and are not specifications. All suggestions and data are offered in good faith but without guarantee as conditions and methods of use of our products are beyond our control. All claims must be made within 30 days following the date of delivery. The prospective user must determine the suitability of our materials before adopting them on a commercial scale. Suggested uses of our products are not recommendations to use our products in violation of any patent or as a license under any patent of Rockland Immunochemicals, Inc. If you require a commercial license to use this material and do not have one, then return this material, unopened to: Rockland Inc., P.O. BOX 5199, Limerick, Pennsylvania, USA.