

Datasheet for 711-1903**F(ab')₂ Rabbit IgG Fc Antibody Texas Red™ Conjugated****Overview**

Description:	Goat F(ab') ₂ Anti-Rabbit IgG Fc Antibody Texas Red™ Conjugated - 711-1903
Item No.:	711-1903
Size:	1 mg
Applications:	Dot Blot
Reactivity:	Rabbit
Host Species:	Goat

Product Details

Background:	F(ab') ₂ Anti-Rabbit IgG F(c) Texas Red Antibody was generated in goat and detects specifically Rabbit IgG F(c). Secondary Antibodies are available in a variety of formats and conjugate types. When choosing a secondary antibody product, consideration must be given to species and immunoglobulin specificity, conjugate type, fragment and chain specificity, level of cross-reactivity, and host-species source and fragment composition.
Synonyms:	Goat F(ab') ₂ Anti-Rabbit IgG F(c) Texas Red™ Conjugated Antibody, Goat Fab2 Anti-Rabbit IgG Fc Antibody Texas Red™ Conjugation
Host Species:	Goat
Specificity:	IgG Fc
Conjugate:	Texas Red®
Clonality:	Polyclonal
Format:	IgG F(ab') ₂
F/P Ratio:	4.0

Target Details

Reactivity:	Rabbit
Immunogen:	Rabbit IgG F(c) fragment

Purity/Specificity:	This product was prepared from monospecific antiserum by immunoaffinity chromatography using Rabbit IgG coupled to agarose beads followed by solid phase adsorption(s) to remove any unwanted reactivities, pepsin digestion and chromatographic separation. Assay by immunoelectrophoresis resulted in a single precipitin arc against anti-Goat Serum, Rabbit IgG, Rabbit IgG F(c) and Rabbit Serum. No reaction was observed against anti-Pepsin, anti-Goat IgG F(c) or Rabbit IgG F(ab).
----------------------------	----------------------------------------------------------------------------------------------------------------------------------------------------------------------------------------------------------------------------------------------------------------------------------------------------------------------------------------------------------------------------------------------------------------------------------------------------------------------------------------------

Application Details

Tested Applications:	Dot Blot
Application Note:	F(ab') ₂ Anti-Rabbit IgG F(c) Texas Red Antibody has been tested by dot blot and is designed for immunofluorescence microscopy, fluorescence based plate assays (FLISA) and fluorescent western blotting. This product is also suitable for multiplex analysis, including multicolor imaging, utilizing various commercial platforms.
Assay Dilutions:	All assays should be optimized by the user. Recommended dilutions (if any) may be listed below.
FC:	1:500 - 1:2,500
FLISA:	1:10,000 - 1:50,000
IF:	1:1,000 - 1:5,000

Formulation

Physical State:	Lyophilized
Concentration:	1 mg/mL by UV absorbance at 280 nm
Buffer:	0.02 M Potassium Phosphate, 0.15 M Sodium Chloride, pH 7.2
Preservative:	0.01% (w/v) Sodium Azide
Stabilizer:	10 mg/mL Bovine Serum Albumin (BSA) - Immunoglobulin and Protease free
Reconstitution Volume:	1.0 mL
Reconstitution Buffer:	Restore with deionized water (or equivalent)

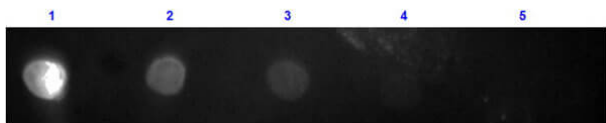
Shipping & Handling

Shipping Condition:	Ambient
----------------------------	---------

Storage Condition: Store vial at 4° C prior to restoration. For extended storage aliquot contents and freeze at -20° C or below. Avoid cycles of freezing and thawing. Centrifuge product if not completely clear after standing at room temperature. This product is stable for several weeks at 4° C as an undiluted liquid. Dilute only prior to immediate use.

Expiration: Expiration date is one (1) year from date of receipt.

Images



Dot Blot

Dot Blot results of Goat F(ab')₂ Anti-Rabbit IgG F(c) Antibody Texas Red™ Conjugated. Dots are Rabbit F(c) at (1) 100ng, (2) 33.3ng, (3) 11.1ng, (4) 3.70ng, (5) 1.23ng. Blocking: MB-070 for 30 min at RT. Primary Antibody: Goat F(ab')₂ Anti-Rabbit IgG F(c) Antibody Texas Red™ at 1μg/mL for 1hr at RT. Secondary Antibody: none. Imaged with BioRad ChemiDoc, DL549 filter.

Disclaimer

This product is for research use only and is not intended for therapeutic or diagnostic applications. Please contact a technical service representative for more information. All products of animal origin manufactured by Rockland Immunochemicals are derived from starting materials of North American origin. Collection was performed in United States Department of Agriculture (USDA) inspected facilities and all materials have been inspected and certified to be free of disease and suitable for exportation. All properties listed are typical characteristics and are not specifications. All suggestions and data are offered in good faith but without guarantee as conditions and methods of use of our products are beyond our control. All claims must be made within 30 days following the date of delivery. The prospective user must determine the suitability of our materials before adopting them on a commercial scale. Suggested uses of our products are not recommendations to use our products in violation of any patent or as a license under any patent of Rockland Immunochemicals, Inc. If you require a commercial license to use this material and do not have one, then return this material, unopened to: Rockland Inc., P.O. BOX 5199, Limerick, Pennsylvania, USA.