

Datasheet for KOA0374**Human Angiopoietin-2 ELISA Kit****Overview**

Description:	Human Angiopoietin-2 AccuSignal ELISA Kit - KOA0374
Item No.:	KOA0374
Size:	1 Kit
Applications:	ELISA
Reactivity:	Human
Range:	156 pg/ml - 10000 pg/ml

Product Details

Background:	Angiopoietin 1 and Angiopoietin 2 are important for development of the endothelium, by regulating tyrosine phosphorylation of the membrane receptor Tie 2. Angiopoietin 2 is only 60% homologous with Angiopoietin 1. Angiopoietin-2 is a naturally occurring antagonist of angiopoietin-1 that competes for binding to the TIE2 receptor and blocks ANGPT1-induced TIE2 autophosphorylation. Angiopoietin 1 binding to Tie 2 causes phosphorylation of the receptor. Angiopoietin 2 competes for this binding, and thus blocks receptor phosphorylation. Angiopoietin 2 expression occurs at sites of vascular remodelling: dorsal aorta and major aortic branches, ovary, placenta and uterus.
Synonyms:	AGPT2, ANG 2, ANG-2, ANG2, Angiopoietin 2a, Angiopoietin 2B, Angiopoietin-2, Angiopoietin2, ANGPT2_HUMAN, ANGPT 2, Angpt2, Tie2 ligand
Detection Kit Type:	ELISA Kit
Detection Range:	156 pg/ml - 10000 pg/ml
Sensitivity:	<10 pg/ml

Target Details

Gene Name:	ANGPT2
Reactivity:	Human
Immunogen:	Expression system for standard: NSO; Immunogen sequence: Y19-F496
Purity/Specificity:	Natural and recombinant human Angiopoietin-2. There is no detectable cross-reactivity with other relevant proteins.

Relevant Links:

- [UniProtKB - O15123](#)
- [NCBI - NP_001112359.1](#)
- [GeneID - 285](#)
- [KOA0374 Protocol](#)

Application Details

Tested Applications: ELISA

Application Note: Useful in Sandwich ELISA for Quantitative Detection of Antigen. Aliquot 0.1ml per well of the 10000pg/ml, 5000pg/ml, 2500pg/ml, 1250pg/ml, 625pg/ml, 312pg/ml, 156pg/ml human Angiopoietin-2 standard solutions into the precoated 96-well plate. Add 0.1ml of the sample diluent buffer into the control well (Zero well). Add 0.1ml of each properly diluted sample of human cell culture supernates, serum, plasma(heparin, EDTA), saliva or human milk to each empty well. It is recommended that each human Angiopoietin-2 standard solution and each sample be measured in duplicate.

Assay Dilutions: All assays should be optimized by the user. Recommended dilutions (if any) may be listed below.

Formulation

Anticoagulant: Heparin Sodium

Shipping & Handling

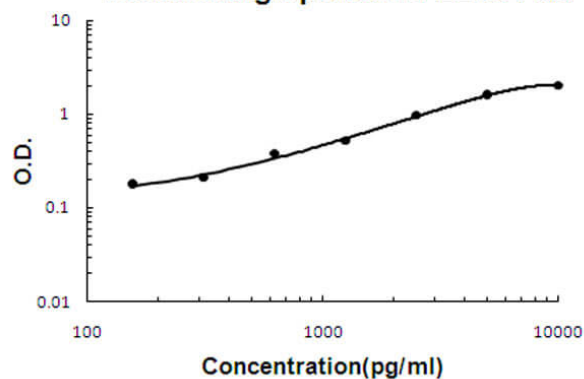
Shipping Condition: Wet Ice

Storage Condition: Store vials at 4°C prior to opening. Centrifuge product if not completely clear after standing at room temperature. This product is stable for 6 months at 4°C as an undiluted liquid. Dilute only prior to immediate use. For extended storage freeze at -20°C or below for 12 months. Avoid cycles of freezing and thawing.

Expiration: See kit insert for complete instructions.

Images

Human Angiopoietin-2 ELISA Kit



ELISA

Human Angiopoietin-2 AccuSignal ELISA Kit standard curve.
Assay Range: 156pg/ml-10000pg/ml. Sensitivity: <10pg/ml.

Disclaimer

This product is for research use only and is not intended for therapeutic or diagnostic applications. Please contact a technical service representative for more information. All products of animal origin manufactured by Rockland Immunochemicals are derived from starting materials of North American origin. Collection was performed in United States Department of Agriculture (USDA) inspected facilities and all materials have been inspected and certified to be free of disease and suitable for exportation. All properties listed are typical characteristics and are not specifications. All suggestions and data are offered in good faith but without guarantee as conditions and methods of use of our products are beyond our control. All claims must be made within 30 days following the date of delivery. The prospective user must determine the suitability of our materials before adopting them on a commercial scale. Suggested uses of our products are not recommendations to use our products in violation of any patent or as a license under any patent of Rockland Immunochemicals, Inc. If you require a commercial license to use this material and do not have one, then return this material, unopened to: Rockland Inc., P.O. BOX 5199, Limerick, Pennsylvania, USA.