

Datasheet for KOA0647**Human TLR1 ELISA Kit****Overview**

Description:	Human TLR1 AccuSignal ELISA Kit - KOA0647
Item No.:	KOA0647
Size:	1 Kit
Applications:	ELISA
Reactivity:	Human
Range:	156 pg/ml - 10,000 pg/ml

Product Details

Background:	TLR1 is a member of the Toll-like receptor family (TLR) of pattern recognition receptors of the innate immune system. TLR1 gene was mapped to 4p14 by fluorescence in situ hybridization. TLR1 recognizes pathogen-associated molecular pattern with a specificity for gram-positive bacteria. TLR1 has also been designated as CD281 (cluster of differentiation 281). TLR1 interacts with TLR2 to recognize the lipid configuration of the native mycobacterial lipoprotein as well as several triacylated lipopeptides.
Synonyms:	CD281, CD281 antigen, KIAA0012, LPRS5, rsc786, Similar to Drosophila Toll protein, TIL, TIL. LPRS5, Tlr1, TLR1_HUMAN, Toll (Drosophila) homolog, Toll like receptor 1, Toll like receptor 1 Precursor, Toll-like receptor 1, Toll/Interleukin 1 receptor like, Toll/interleukin-1 receptor-like protein
Detection Kit Type:	ELISA Kit
Detection Range:	156 pg/ml - 10,000 pg/ml
Sensitivity:	<10 pg/ml

Target Details

Gene Name:	TLR1
Reactivity:	Human
Immunogen:	Expression system for standard: NSO; Immunogen sequence: S22-N578
Purity/Specificity:	Natural and recombinant human TLR1. There is no detectable cross-reactivity with other relevant proteins.

Relevant Links:

- [UniProtKB - Q15399](#)
- [NCBI - NP_003254.2](#)
- [GeneID - 7096](#)
- [KOA0647 Protocol](#)

Application Details

Tested Applications:	ELISA
Application Note:	Useful in Sandwich ELISA for Quantitative Detection of Antigen. Aliquot 0.1ml per well of the 10,000pg/ml, 5000pg/ml, 2500pg/ml, 1250pg/ml, 625pg/ml, 312pg/ml, 156pg/ml human TLR1 standard solutions into the precoated 96-well plate. Add 0.1ml of the sample diluent buffer into the control well (Zero well). Add 0.1ml of each properly diluted sample of human cell culture supernates, serum or plasma(heparin, EDTA) to each empty well. It is recommended that each human TLR1 standard solution and each sample be measured in duplicate.
Assay Dilutions:	All assays should be optimized by the user. Recommended dilutions (if any) may be listed below.

Formulation

Anticoagulant:	Heparin Sodium
-----------------------	----------------

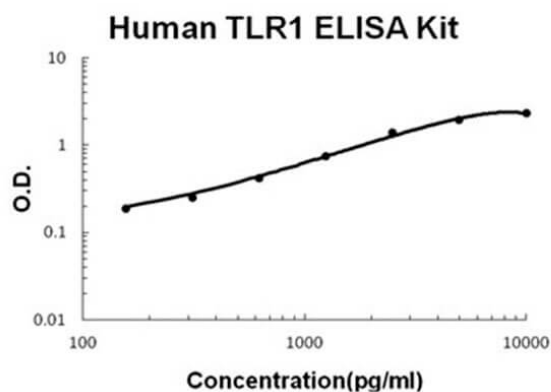
Shipping & Handling

Shipping Condition:	Wet Ice
Storage Condition:	Store vials at 4°C prior to opening. Centrifuge product if not completely clear after standing at room temperature. This product is stable for 6 months at 4°C as an undiluted liquid. Dilute only prior to immediate use. For extended storage freeze at -20°C or below for 12 months. Avoid cycles of freezing and thawing.
Expiration:	See kit insert for complete instructions.

Images

ELISA

Human TLR1 AccuSignal ELISA Kit standard curve. Assay
Range: 156pg/ml-10,000pg/ml. Sensitivity: <10pg/ml.

**Disclaimer**

This product is for research use only and is not intended for therapeutic or diagnostic applications. Please contact a technical service representative for more information. All products of animal origin manufactured by Rockland Immunochemicals are derived from starting materials of North American origin. Collection was performed in United States Department of Agriculture (USDA) inspected facilities and all materials have been inspected and certified to be free of disease and suitable for exportation. All properties listed are typical characteristics and are not specifications. All suggestions and data are offered in good faith but without guarantee as conditions and methods of use of our products are beyond our control. All claims must be made within 30 days following the date of delivery. The prospective user must determine the suitability of our materials before adopting them on a commercial scale. Suggested uses of our products are not recommendations to use our products in violation of any patent or as a license under any patent of Rockland Immunochemicals, Inc. If you require a commercial license to use this material and do not have one, then return this material, unopened to: Rockland Inc., P.O. BOX 5199, Limerick, Pennsylvania, USA.