

Datasheet for KOA0652**Human Nesfatin-1 ELISA Kit****Overview**

Description:	Human Nesfatin-1 AccuSignal ELISA Kit - KOA0652
Item No.:	KOA0652
Size:	1 Kit
Applications:	ELISA
Reactivity:	Human
Range:	31.2 pg/ml - 2000 pg/ml

Product Details

Background:	Nesfatin-1 is a naturally occurring protein molecule produced by the brains of mammals. It is responsible for regulating appetite and production of body fat. Nesfatin-1 is a metabolic polypeptide encoded in the N-terminal region of the protein precursor, Nucleobindin2(NUCB2). Recombinant human Nesfatin-1 is a 9.7 kDa protein containing 82 amino acid residues. Originally identified as a hypothalamic neuropeptide, Nesfatin-1 is also expressed in other areas of the brain, and in pancreatic islets of Langerhans, gastric endocrine cells and adipocytes. Nesfatin-1 plays a role in hunger and energy regulation in an independent manner.
Synonyms:	DNA binding protein NEFA, DNA-binding protein NEFA, Gastric cancer antigen Zg4, NEFA, Nefastin 1, Nefastin-1, Nefastin1, Nucb2, NUCB2_HUMAN, Nucleobindin-2, Nucleobinding 2, Prepronefastin, Prepronesfatin
Detection Kit Type:	ELISA Kit
Detection Range:	31.2 pg/ml - 2000 pg/ml
Sensitivity:	<10 pg/ml

Target Details

Gene Name:	NUCB2
Reactivity:	Human
Immunogen:	Expression system for standard: E.coli; Immunogen sequence: V25-L106
Purity/Specificity:	Natural and recombinant mouse CCL8. There is no detectable cross-reactivity with other relevant proteins.

Relevant Links:	<ul style="list-style-type: none">• UniProtKB - P80303• NCBI - NP_005004.1• GeneID - 4925• KOA0652 Protocol
------------------------	--

Application Details

Tested Applications:	ELISA
Application Note:	Useful in Sandwich ELISA for Quantitative Detection of Antigen. Aliquot 0.1ml per well of the 2000pg/ml, 1000pg/ml, 500pg/ml, 250pg/ml, 125pg/ml, 62.5pg/ml, 31.2pg/ml human Nesfatin-1 standard solutions into the precoated 96-well plate. Add 0.1ml of the sample diluent buffer into the control well (Zero well). Add 0.1ml of each properly diluted sample of human cell culture supernates or serum to each empty well. It is recommended that each human Nesfatin-1 standard solution and each sample be measured in duplicate. Seal the plate with the cover and incubate at 37°C for 90 min.
Assay Dilutions:	All assays should be optimized by the user. Recommended dilutions (if any) may be listed below.

Formulation

Concentration:	1 kit
-----------------------	-------

Shipping & Handling

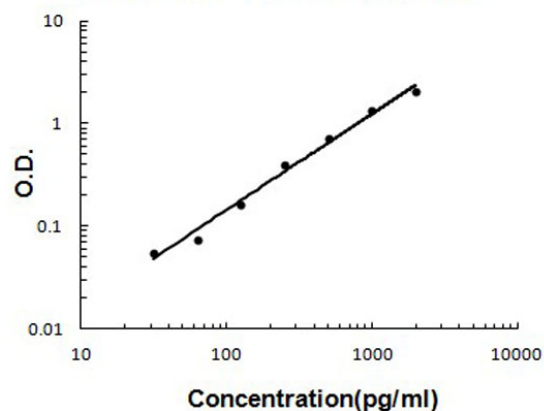
Shipping Condition:	Wet Ice
Storage Condition:	Store vials at 4°C prior to opening. Centrifuge product if not completely clear after standing at room temperature. This product is stable for 6 months at 4°C as an undiluted liquid. Dilute only prior to immediate use. For extended storage freeze at -20°C or below for 12 months. Avoid cycles of freezing and thawing.
Expiration:	See kit insert for complete instructions.

Images

Human Nesfatin-1 ELISA Kit

ELISA

Human Nesfatin-1 ELISA Kit standard curve.



Disclaimer

This product is for research use only and is not intended for therapeutic or diagnostic applications. Please contact a technical service representative for more information. All products of animal origin manufactured by Rockland Immunochemicals are derived from starting materials of North American origin. Collection was performed in United States Department of Agriculture (USDA) inspected facilities and all materials have been inspected and certified to be free of disease and suitable for exportation. All properties listed are typical characteristics and are not specifications. All suggestions and data are offered in good faith but without guarantee as conditions and methods of use of our products are beyond our control. All claims must be made within 30 days following the date of delivery. The prospective user must determine the suitability of our materials before adopting them on a commercial scale. Suggested uses of our products are not recommendations to use our products in violation of any patent or as a license under any patent of Rockland Immunochemicals, Inc. If you require a commercial license to use this material and do not have one, then return this material, unopened to: Rockland Inc., P.O. BOX 5199, Limerick, Pennsylvania, USA.