

**Datasheet for KOA0711****Human LAP (TGF beta1) ELISA Kit****Overview**

<b>Description:</b>	Human LAP (TGF beta1) AccuSignal ELISA Kit - KOA0711
<b>Item No.:</b>	KOA0711
<b>Size:</b>	1 Kit
<b>Applications:</b>	ELISA
<b>Reactivity:</b>	Human
<b>Range:</b>	62.5 pg/ml - 4000 pg/ml

**Product Details**

<b>Background:</b>	TGFbeta1 is secreted as a latent form, which consists of its mature form and a latency-associated peptide(beta1-LAP) in either the presence or the absence of additional latent TGF-beta1-binding protein. Processing and cleavage of the precursor protein between amino acids 278 and 279 results in the formation of LAP dimers and TGF beta dimers that then non-covalently associate with each other to form the small latent TGF beta complex. LAP is secreted and can be found in the extracellular matrix. In addition, LAP can also be expressed on platelets and activated regulatory T cells.
<b>Synonyms:</b>	Camurati-Engelmann disease, CED, DPD1, LAP, Latency-associated peptide, TGF beta 1 protein, TGF-beta-1, TGFB, tgfb1, TGFB1_HUMAN, TGFbeta, Transforming growth factor beta 1
<b>Detection Kit Type:</b>	ELISA Kit
<b>Detection Range:</b>	62.5 pg/ml - 4000 pg/ml
<b>Sensitivity:</b>	<10 pg/ml

**Target Details**

<b>Gene Name:</b>	TGFB1
<b>Reactivity:</b>	Human
<b>Immunogen:</b>	Expression system for standard: sf21; Immunogen sequence: L30-R278
<b>Purity/Specificity:</b>	Natural and recombinant human LAP(TGF-beta1). There is no detectable cross-reactivity with other relevant proteins.

**Relevant Links:**

- [UniProtKB - P01137](#)
- [NCBI - NP\\_000651.3](#)
- [GeneID - 7040](#)
- [KOA0711 Protocol](#)

## Application Details

<b>Tested Applications:</b>	ELISA
<b>Application Note:</b>	Useful in Sandwich ELISA for Quantitative Detection of Antigen. Aliquot 0.1ml per well of the 4000pg/ml, 2000pg/ml, 1000pg/ml, 500pg/ml, 250pg/ml, 125pg/ml, 62.5pg/ml human LAP(TGF-beta1) standard solutions into the precoated 96-well plate. Add 0.1ml of the sample diluent buffer into the control well (Zero well). Add 0.1ml of each properly diluted sample of human cell culture supernates, serum or plasma(heparin, EDTA) to each empty well. It is recommended that each human LAP(TGF-beta1) standard solution and each sample be measured in duplicate.
<b>Assay Dilutions:</b>	All assays should be optimized by the user. Recommended dilutions (if any) may be listed below.

## Formulation

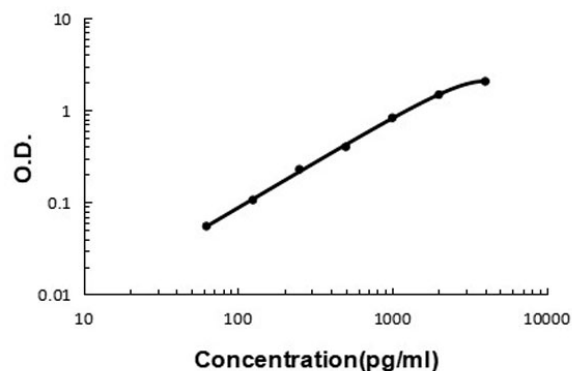
<b>Anticoagulant:</b>	Heparin Sodium
-----------------------	----------------

## Shipping & Handling

<b>Shipping Condition:</b>	Wet Ice
<b>Storage Condition:</b>	Store vials at 4°C prior to opening. Centrifuge product if not completely clear after standing at room temperature. This product is stable for 6 months at 4°C as an undiluted liquid. Dilute only prior to immediate use. For extended storage freeze at -20°C or below for 12 months. Avoid cycles of freezing and thawing.
<b>Expiration:</b>	See kit insert for complete instructions.

## Images

### Human LAP ELISA Kit



### ELISA

Human LAP (TGF-beta1) ELISA Kit standard curve.

## Disclaimer

This product is for research use only and is not intended for therapeutic or diagnostic applications. Please contact a technical service representative for more information. All products of animal origin manufactured by Rockland Immunochemicals are derived from starting materials of North American origin. Collection was performed in United States Department of Agriculture (USDA) inspected facilities and all materials have been inspected and certified to be free of disease and suitable for exportation. All properties listed are typical characteristics and are not specifications. All suggestions and data are offered in good faith but without guarantee as conditions and methods of use of our products are beyond our control. All claims must be made within 30 days following the date of delivery. The prospective user must determine the suitability of our materials before adopting them on a commercial scale. Suggested uses of our products are not recommendations to use our products in violation of any patent or as a license under any patent of Rockland Immunochemicals, Inc. If you require a commercial license to use this material and do not have one, then return this material, unopened to: Rockland Inc., P.O. BOX 5199, Limerick, Pennsylvania, USA.