

## Datasheet for MB-211-0500

**Opal Prestained Protein Standard 3.5-245kDa****Overview**

<b>Description:</b>	Opal Prestained Protein Standard 3.5-245kDa - MB-211-0500
<b>Item No.:</b>	MB-211-0500
<b>Size:</b>	500 µL
<b>Applications:</b>	SDS-PAGE, WB

**Product Details**

<b>Background:</b>	Opal Prestained Protein Standard 3.5-245kDa is a three-color protein standard with 13 pre-stained proteins covering a wide range molecular weights from 3.5 to 245 kDa. Proteins are covalently coupled with a blue chromophore except for two reference bands (one green and one red band at 25 kDa and 75 kDa respectively) made visible when separated on SDS-PAGE (Tris-glycine buffer). Opal Prestained Protein Standard 3.5-245kDa is designed for monitoring protein separation during SDS-polyacrylamide gel electrophoresis, verification of Western blot transfer efficiency on membranes (PVDF, nylon, or nitrocellulose) and for approximating the size of proteins.
<b>Synonyms:</b>	Protein ladder, Protein marker, Protein standard, Protein molecular weight standard, Molecular weight marker, Protein molecular weight ladder, Prestained molecular weight marker, Prestained molecular weight ladder, Prestained protein ladder, Protein marker
<b>Reagent Type:</b>	MW Standards

**Target Details**

<b>Purity/Specificity:</b>	Opal Prestained Protein Standard 3.5-245kDa contains approximately 0.1-0.4 mg/ml of each protein in the buffer (20 mM Tris-phosphate, pH 7.5 at 25°C), 2 % SDS, 1 mM Dithiothreitol, 3.6 M Urea, and 15 % (v/v) Glycerol).
----------------------------	--

**Application Details**

<b>Tested Applications:</b>	SDS-PAGE, WB
-----------------------------	--------------

**Application Note:** Opal Prestained Protein Standard 3.5-245kDa is supplied in gel loading buffer and is ready to use. Do not heat, dilute, add reducing agent before loading. Suggested load volumes: 3  $\mu$ l or 5  $\mu$ l per loading for clear visualization during electrophoresis on 15-well or 10-well mini-gel, respectively - 2-3  $\mu$ l per well for general Western blot transferring. - Apply more for thicker (>1.5 mm) or larger gel.

**Assay Dilutions:** All assays should be optimized by the user. Recommended dilutions (if any) may be listed below.

## Formulation

**Physical State:** Liquid (in 1x Loading Buffer)

**Concentration:** Neat

**Buffer:** See application note.

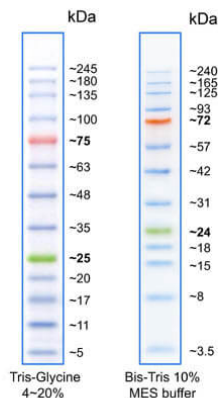
## Shipping & Handling

**Shipping Condition:** Wet Ice

**Storage Condition:** Store vial at 2°-8° C. Can be stored at room temperature for up to two (2) weeks or at -20° C for up to two (2) years.

**Expiration:** Expiration date is three (3) months from date of receipt.

## Images



### SDS-PAGE

Opal Prestained Protein Standard 3.5-245kDa shows these typical migration patterns when loaded at 5  $\mu$ L per well under various gel conditions.

## Disclaimer

This product is for research use only and is not intended for therapeutic or diagnostic applications. Please contact a technical service representative for more information. All products of animal origin manufactured by Rockland Immunochemicals are derived from starting materials of North American origin. Collection was performed in United States Department of Agriculture (USDA) inspected facilities and all materials have been inspected and certified to be free of disease and suitable for exportation. All properties listed are typical characteristics and are not specifications. All suggestions and data are offered in good faith but without guarantee as conditions and methods of use of our products are beyond our control. All claims must be made within 30 days following the date of delivery. The prospective user must determine the suitability of our materials before adopting them on a commercial scale. Suggested uses of our products are not recommendations to use our products in violation of any patent or as a license under any patent of Rockland Immunochemicals, Inc. If you require a commercial license to use this material and do not have one, then return this material, unopened to: Rockland Inc., P.O. BOX 5199, Limerick, Pennsylvania, USA.