

Datasheet for S000-54**Streptavidin ATTO 550 Conjugated****Overview**

Description:	Streptavidin ATTO 550 Conjugated - S000-54
Item No.:	S000-54
Size:	500 µg
Applications:	WB

Product Details

Background:	STREPTAVIDIN ATTO 550 Conjugated is designed for STED microscopy, FRET, immunofluorescence microscopy, fluorescence based plate assays (FLISA) and fluorescent western blotting. This product is also suitable for multiplex analysis, including multicolor imaging, utilizing various commercial platforms.
Synonyms:	SA, S avidin, streptococcus avidin, streptavidin AT550, ATTO550, ATTO-TEC 550, STREPTAVIDIN ATTO 550 Conjugated
Conjugate:	ATTO 550
F/P Ratio:	1.9

Target Details

Purity/Specificity:	STREPTAVIDIN ATTO 550 Conjugated was prepared from chromatographically purified Streptavidin. Assay by immunoelectrophoresis resulted in a single precipitin arc against anti-Streptavidin. No reaction was observed against anti-Avidin.
----------------------------	---

Application Details

Tested Applications:	WB
Application Note:	Streptavidin ATTO 550 has been tested by western blot. The emission spectra for this ATTO conjugate matches the principle output wavelengths of most common fluorescence instrumentation.
Assay Dilutions:	All assays should be optimized by the user. Recommended dilutions (if any) may be listed below.

FLISA:	>1:20,000
IF:	>1:5,000
WB:	>1:10,000

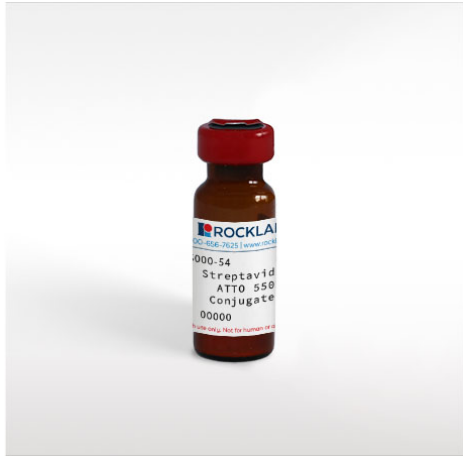
Formulation

Physical State:	Lyophilized
Concentration:	1.1 mg/ml by UV absorbance at 280 nm
Buffer:	0.02 M Potassium Phosphate, 0.15 M Sodium Chloride, pH 7.2
Preservative:	0.01% (w/v) Sodium Azide
Stabilizer:	10 mg/mL Bovine Serum Albumin (BSA) - Immunoglobulin and Protease free
Reconstitution Volume:	500 μ L
Reconstitution Buffer:	Restore with deionized water (or equivalent)

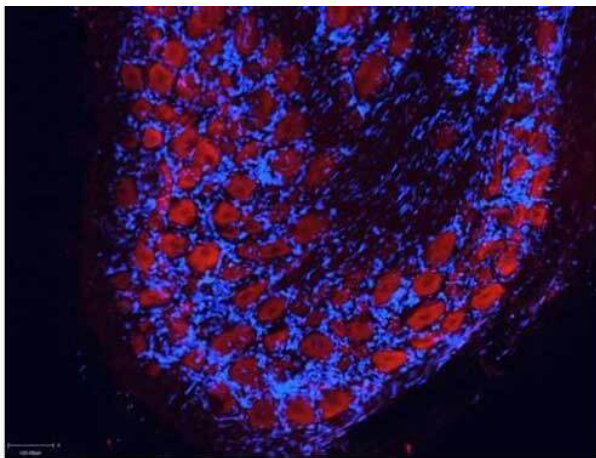
Shipping & Handling

Shipping Condition:	Ambient
Storage Condition:	Store vial at 4° C prior to restoration. For extended storage aliquot contents and freeze at -20° C or below. Avoid cycles of freezing and thawing. Centrifuge product if not completely clear after standing at room temperature. This product is stable for several weeks at 4° C as an undiluted liquid. Dilute only prior to immediate use.
Expiration:	Expiration date is one (1) year from date of receipt.

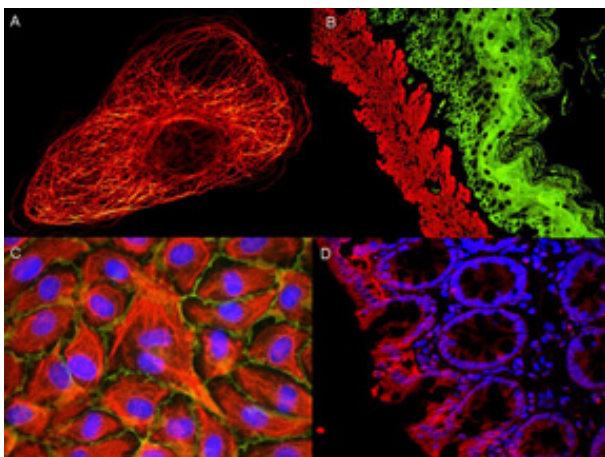
Images


Bottle

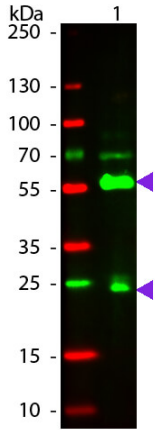
Streptavidin ATTO 550 Conjugated


Immunofluorescence Microscopy

Atto™ dyes can be used for multicolor immunofluorescent detection with low background and high signal. Example shown here is Immunohistochemical staining using ATTO-550 Anti-Aquaporin 2-antibody (red) of paraffin embedded region of rat kidney showing a transversal cut of the inner medulla near to the renal papilla. Nuclei are visualized with Hoechst 33342 (blue). Images provided courtesy of Dr. Jörg Reichwein, ATTO-TEC GmbH


Western Blot

Atto Dye-Immunofluorescence microscopy Atto dyes can be used for multicolor immunofluorescent detection with low background and high signal. Examples shown are: A. Tubulin in PtK2- male Rat Kangaroo Kidney Epithelial Cells was detected using ATTO 532 labeled secondary antibody. B. Muscle alpha-actin was stained with a mouse primary antibody and ATTO 488 anti-mouse IgG (green) while Cytokeratin was stained with polyclonal rabbit anti-cytokeratin and ATTO 647N anti-rabbit IgG (red). C. HUVEC (Human umbilical vein endothelial cells were stained with anti- Vimentin-ATTO 532 (green), anti-E-Cadherin-ATTO 655 (red) and DAPI (blue). D. Rat colon sections were stained with Anti-Aquaporin 3-ATTO 594 antibody. Hoechst 33342 (blue) is used as counterstain.

**Western Blot**

Western Blot of Atto 550 Conjugated Streptavidin. Lane 1: Biotin conjugated Guinea Pig IgG. Lane 2: None. Load: 50 ng per lane. Primary antibody: None. Secondary antibody: Atto 550 Conjugated Streptavidin at 1:1,1000 for 60 min at RT. Block: MB-070 for 30 min at RT. Predicted/Observed size: 28 & 55 kDa, 28 & 55 kDa for Guinea Pig IgG. Other band(s): Guinea Pig IgG splice variants and isoforms.

Disclaimer

This product is for research use only and is not intended for therapeutic or diagnostic applications. Please contact a technical service representative for more information. All products of animal origin manufactured by Rockland Immunochemicals are derived from starting materials of North American origin. Collection was performed in United States Department of Agriculture (USDA) inspected facilities and all materials have been inspected and certified to be free of disease and suitable for exportation. All properties listed are typical characteristics and are not specifications. All suggestions and data are offered in good faith but without guarantee as conditions and methods of use of our products are beyond our control. All claims must be made within 30 days following the date of delivery. The prospective user must determine the suitability of our materials before adopting them on a commercial scale. Suggested uses of our products are not recommendations to use our products in violation of any patent or as a license under any patent of Rockland Immunochemicals, Inc. If you require a commercial license to use this material and do not have one, then return this material, unopened to: Rockland Inc., P.O. BOX 5199, Limerick, Pennsylvania, USA.