

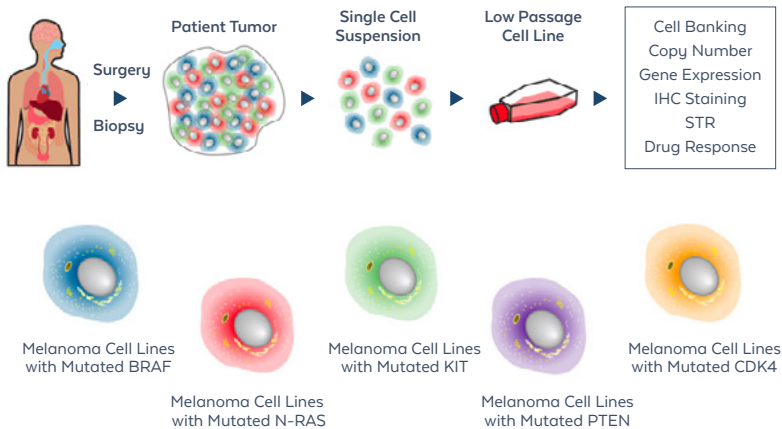


Cancer Research

Melanoma Cell Lines, ATM,
AKT, NCI, MEK/ERK, PARP1,
PTM, GFP & Epitopes, and
Supporting Reagents

Melanoma Cell Lines

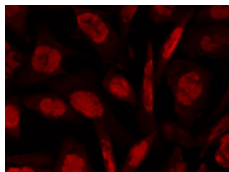
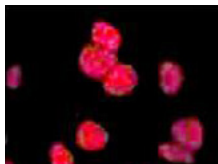
Rockland produces, validates, and distributes a diverse collection of highly-characterized melanoma cell line models. Because they are biologically stable in terms of gene expression pattern, tumor architecture, and mutation status, these models have the ability to predict clinical activity. They can also serve as individualized experimental models, which is useful for drug treatment and outcome. Originally sourced by Dr. Meenhard Herlyn of The Wistar Institute, this collection has been characterized to confirm a match to the originating patient tumor tissue via mRNA, qPCR, and DNA short tandem repeat (STR) analysis.



ATM Antibodies & Peptides

Product	Host	Application	Item No.
Anti-ATM Protein Kinase pS1981 Monoclonal	Mouse	ELISA, WB, IHC, IF	200-301-400
Anti-ATM Protein Kinase S1981	Rabbit	ELISA, WB	600-401-398
Anti-ATM Protein Kinase pS1981 Monoclonal	Mouse	ELISA, WB, IHC, FC	200-301-500
Anti-ATM Protein Kinase pS1981 Monoclonal Peroxidase Conjugated	Mouse	ELISA, WB, IHC	200-303-400
Anti-ATM Protein Kinase pS1981 Monoclonal Biotin Conjugated	Mouse	ELISA, WB, IHC	200-306-400
Anti-ATM Protein Kinase pS1981	Sheep	ELISA, WB	600-601-400
ATM S1981 Peptide	-		000-000-398
ATM pS1981 Peptide	-		000-000-400

Anti-ATM Protein Kinase
pS1981 Monoclonal
Peroxidase Conjugated
200-303-400



Anti-ATM Protein Kinase
pS1981 Monoclonal
Biotin Conjugated
200-306-400

AKT Antibodies

Antibody	Host	Application	Item No.
Anti-AKT	Mouse	ELISA, WB, IHC, FC	200-301-B26
	Rabbit	ELISA, WB, IHC, IF, FC	200-401-N98
	Sheep	ELISA, WB, IHC, IF, FC	600-601-401
Anti-AKT pS473	Mouse	ELISA, WB, IHC, IF, FC	200-301-B19
Anti-AKT pS473	Rabbit	ELISA, WB, IHC, FC	600-401-268
Anti-AKT pT308	Mouse	ELISA, WB, IHC, FC	200-301-B25
Anti-AKT pT308	Rabbit	ELISA, WB, FC	600-401-269
Anti-AKT1	Mouse	ELISA, WB, IHC, FC	200-301-I51
Anti-AKT2	Mouse	ELISA, WB	200-301-BR8
	Rabbit	ELISA, WB, FC	600-401-425
Anti-AKT2	Rat	ELISA, WB, IHC, FC	200-501-E71
Anti-AKT3	Mouse	ELISA, WB, IHC, FC	200-301-E75
Anti-Calcineurin alpha	Mouse	ELISA, WB, IHC	200-301-P23
Anti-Cyclin A	Mouse	ELISA, WB, IHC	200-301-P30
Anti-Elk-1 pS383	Rabbit	ELISA, WB	600-401-D34
Anti-GAB1	Rabbit	ELISA, WB	200-401-G66
Anti-IP3 Receptor	Mouse	WB, IHC, IF	200-301-F77
Anti-PDK1	Rabbit	ELISA, WB, IHC	600-401-411
Anti-TAO2 pS181	Rabbit	WB	600-401-E41

NCI Validated Antibodies

Antibody	Host	Application	Item No.
Anti-ABCB6	Rabbit	ELISA, WB	600-401-945
Anti-AHA1	Rabbit	ELISA, WB, IHC	600-401-974
Anti-Bach2	Rabbit	ELISA, WB	600-401-H35
Anti-BrdU	Mouse	ELISA, WB, IHC, IF, FC	200-301-H50
Anti-c-MET pY1349 pY1356	Rabbit	ELISA, WB	600-401-989
Anti-Cripto-1 (TDGF1)	Rabbit	ELISA, WB, IHC	600-401-997
Anti-FKBP8	Rabbit	ELISA, WB, IHC	200-401-A58
Anti-Glypican-1	Rabbit	ELISA, WB, IHC	200-401-B44
Anti-IdU	Mouse	ELISA, WB, IHC, IF, FC	200-301-H51
Anti-IL-7 Receptor α -chain pY449	Rabbit	ELISA, WB, IHC	600-401-A49
Anti-Lac I	Rabbit	ELISA, WB	600-401-B04
Anti-Mesothelin	Mouse	ELISA, WB, IHC	200-301-A87
Anti-MLF1	Rabbit	ELISA, WB, IHC	600-401-923
Anti-Myosin 1G	Rabbit	ELISA, WB	600-401-959
Anti-Pdcd4	Rabbit	ELISA, WB, IHC	600-401-965
Anti-RNF25	Rabbit	ELISA, WB	600-401-969
Anti-SMAD3 pS423 pS425	Rabbit	ELISA, WB, IHC, FC	600-401-919
Anti-SMAD3 pT179	Rabbit	ELISA, WB, IP	600-401-C48
Anti-THRA	Rabbit	ELISA, WB, IHC, IF	600-401-A38

MEK Antibodies, Proteins and Peptide Controls

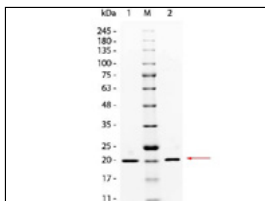
Product	Host	Application	Item No.
Anti-ERK/MAPK	Rabbit	ELISA, WB	612-401-D38
Anti-MEK1	Rabbit	ELISA, WB, IHC	600-401-GQ0
	Mouse	ELISA, WB	200-301-GQ0
Anti-MEK1 pS222	Mouse	ELISA, WB	200-301-GP4
Anti-MEK1 pT292	Rabbit	WB	600-401-D72
Anti-MEK1 pT386	Rabbit	WB	600-401-D73
Anti-MEK1/2 pS218/pS222	Rabbit	WB	600-401-C84
Anti-MEK2 N-Term	Rabbit	ELISA, WB, IHC	600-401-GN8
Anti-MEK2 C-Term	Rabbit	ELISA, WB, IHC	600-401-GQ2
Anti-MEK2 N-Term	Mouse	ELISA, WB	200-301-GN8
Anti-MEK2 C-Term	Mouse	ELISA, WB	200-301-GQ2
Anti-MEK2 pS226	Mouse	ELISA, WB	200-301-GR4
MEK1 C-Term Blocking Peptide	-	WB	000-001-GQ0
MEK1 Human Recombinant Protein	-	WB	009-001-GQ3
MEK1 N-Term Blocking Peptide	-	WB	000-001-GN7
MEK1 pS218-pS222 Human Recombinant Protein	-	WB	009-001-GP5
MEK2 C-Term Blocking Peptide	-	WB	000-001-GQ2
MEK2 Human Recombinant Protein	-	WB	009-001-GQ4
MEK2 N-Term Blocking Peptide	-	WB	000-001-GN8

ERK Antibodies, Proteins and Peptide Controls

Product	Host	Application	Catalog #
Anti-ERK/MAPK pT202/pY204	Rabbit	WB, IHC	600-401-C76
Anti-ERK1 N-Term	Rabbit	ELISA, WB	600-401-GP0
Anti-ERK1/2	Rabbit	WB, FC, IHC	100-401-F25
Anti-ERK2	Rabbit	ELISA, WB	100-401-218
Anti-ERK2 C-Term	Rabbit	ELISA, WB	600-401-GP1
Anti-ERK2 Internal	Rabbit	ELISA, WB	600-401-GQ1
Anti-ERK2 Internal	Mouse	ELISA, WB	200-301-GQ1
ERK1 (K71A) Protein-HIS Epitope	-	WB	009-001-R91
ERK1 C-Term Blocking Peptide	-	WB	000-001-GP9
ERK1 Double Mutant Human Recombinant Protein	-	WB	009-001-GR1
ERK1 Human Recombinant Protein	-	WB	009-001-GQ8
ERK1 N-Term Blocking Peptide	-	WB	000-001-GP0
ERK1 pT202-pY204 Human Recombinant Protein	-	WB	009-001-GP8
ERK2 C-Term Blocking Peptide	-	WB	000-001-GP1
ERK2 Double Mutant Human Recombinant Protein	-	WB	009-001-GR2
ERK2 Human Recombinant Protein	-	WB	009-001-GQ9
ERK2 pT185-pY187 Human Recombinant Protein	-	WB	009-001-GR0

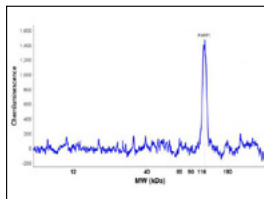
PARP1 Antibodies and Proteins

Product	Host	Application	Catalog #
Anti-PARP	Mouse	WB, FC	200-301-I03
Anti-PARP1 (internal)	Rabbit	WB	200-401-X51
Anti-PARP1 (N-term ZF1)	Rabbit	WB	200-401-GM8
PARP1 (internal) Control Protein	-		009-001-X51
PARP1 (N-term ZF1) Control Protein	-		009-001-GM8
PARP1 (internal) Set	-		KCC-X51
PARP1 (N-term ZF1) Set	-		KCC-GM8
PARP1 (internal) Combo Pack	-	WB	K-X51
PARP1 (N-term ZF1) Combo Pack	-		K-GM8



Anti-PARP1 (N-term ZF1)
(Rabbit) ▶
200-401-GM8

◀ PARP1 (internal)
Control Protein
009-001-X51



PTM- Specific Antibodies

Product	Host	Application	Catalog #
Anti-ATG13 pS318	Rabbit	ELISA, WB, FC	600-401-C49
Anti-Aurora B pT232	Rabbit	ELISA, WB, IF	600-401-677
Anti-CREB pS133	Rabbit	ELISA, WB, IHC	600-401-270
Anti-DNA PKcs pT 2609	Rabbit	ELISA, WB	600-401-494
Anti-GluR1 pS84	Rabbit	ELISA, WB, IHC, IF	612-401-C83
Anti-Histone H2AvD pS137	Rabbit	ELISA, WB, IHC	600-401-914
Anti-Histone H3 [Trimethyl Lys56]	Rabbit	WB, IHC, IF, IP, ChIP	600-401-194
Anti-Histone H4 [ac Lys16]	Rabbit	WB, IHC, IF, IP, ChIP	600-401-J00
Anti-MARK2 pT595	Rabbit	ELISA, WB, IF	600-401-895
Anti-MeCP2 pS421	Rabbit	ELISA, WB	600-401-X14
Anti-mTOR pS2448	Rabbit	ELISA, WB, IHC	600-401-422
Anti-Myosin pS19/pS20	Rabbit	ELISA, WB, IHC	600-401-416
Anti-NF2 (Merlin) pS518	Rabbit	ELISA, WB, IHC	600-401-414
Anti-NFKB p65 (Rel A) pS536	Rabbit	ELISA, WB, IHC	600-401-265
Anti-p38 MAPK pT180/pY182	Rabbit	WB, IHC	600-401-C90
Anti-PPAR gamma pS273	Rabbit	ELISA, WB	600-401-J94
Anti-REDD1 pT23/25	Rabbit	ELISA, WB	600-401-X24
Anti-SMC1 pS957	Mouse	ELISA, WB, IF	200-301-397
Anti-STAT5 pY694	Mouse	ELISA, WB, IHC, IF	200-301-A45

Cancer Research Antibodies

Product	Host	Application	Catalog #
Anti-ABCB1	Rabbit	ELISA, WB, IHC	<u>600-401-967</u>
Anti-ABCB5	Rabbit	ELISA, WB, IHC	<u>600-401-A77</u>
Anti-AKT	Rabbit	ELISA, WB, IHC, IF, FC	<u>100-401-401</u>
Anti-AKT pT308	Mouse	ELISA, WB, IHC, FC	<u>200-301-269</u>
Anti-Bim	Mouse	ELISA, WB, IF	<u>200-301-Z72</u>
Anti-BrdU	Rabbit	ELISA, WB, IHC, IF, FC	<u>600-401-C29</u>
Anti-CD20	Rabbit	ELISA, WB, IHC, FC	<u>200-C01-B40</u>
Anti-Hsc70 (Hsp73)	Mouse	ELISA, WB, IHC	<u>200-301-A28</u>
Anti-HSP27	Mouse	ELISA, WB	<u>200-301-243</u>
Anti-IDO1	Mouse	ELISA, WB, IHC, IF	<u>200-301-E57</u>
Anti-IQSEC1	Rabbit	ELISA, WB	<u>600-401-BY9</u>
Anti-MAGP-2	Rabbit	ELISA, WB	<u>600-401-937</u>
Anti-MECT1	Rabbit	ELISA, WB	<u>600-401-936</u>
Anti-Mesothelin	Mouse	ELISA, WB, IHC	<u>200-301-A88</u>
Anti-MTBP (Ascites)	Mouse	ELISA, WB	<u>500-301-875</u>
Anti-NAG-1 (H variant)	Mouse	ELISA, WB	<u>200-301-B08</u>
Anti-Plasminogen Activator Inhibitor 2	Rabbit	ELISA, WB, IHC	<u>600-401-B22</u>
Anti-TET1	Rabbit	ELISA, WB, IHC, IF	<u>600-401-FC8</u>
Anti-TRPC6	Mouse	ELISA, WB, IHC	<u>200-301-B59</u>

GFP & Epitope Tag Antibodies

Product	Host	Application	Catalog #
Anti-6X HIS EPI TOPE TAG	Mouse	ELISA, WB	<u>200-301-382</u>
	Rabbit	ELISA, WB, IHC	<u>600-401-382</u>
Anti-BETA GALACTOSIDASE	Rabbit	ELISA, WB, IHC	<u>100-4136</u>
Anti-BIOTIN	Rabbit	ELISA, WB, IHC	<u>100-4198</u>
Anti-B-PHYCOERYTHRIN	Rabbit	ELISA, WB, IHC	<u>200-401-099</u>
Anti-GFP	Chicken	ELISA, WB, IHC, IF	<u>600-901-215</u>
	Goat	ELISA, WB, IHC, IF	<u>600-101-215</u>
	Mouse	ELISA, WB, IHC, IF, FC	<u>600-301-215</u>
	Rabbit	ELISA, WB, IHC, IF, FC	<u>600-401-215</u>
Anti-GST	Goat	ELISA, WB, IHC	<u>600-101-200</u>
Anti-KLH	Rabbit	ELISA, WB, IHC	<u>600-401-466</u>
Anti-LUCIFERASE	Goat	ELISA, WB, IHC, IF	<u>200-101-C44</u>
Anti-mCherry Pre-Adsorbed	Rabbit	ELISA, WB, IHC, IF	<u>600-401-P16</u>
Anti-RFP	Chicken	ELISA, WB	<u>600-901-379</u>
	Mouse	ELISA, WB, IF, FC	<u>200-301-379</u>
Anti-RHODAMINE	Mouse	ELISA, WB, IHC	<u>200-301-246</u>
Anti-STREPTAVIDIN	Rabbit	ELISA, WB, IHC	<u>100-4195</u>
Anti-V5 EPI TOPE TAG	Rabbit	ELISA, WB, IHC	<u>600-401-378</u>
Anti-VSV-G EPI TOPE TAG	Rabbit	ELISA, WB, IHC, IF	<u>600-401-386</u>

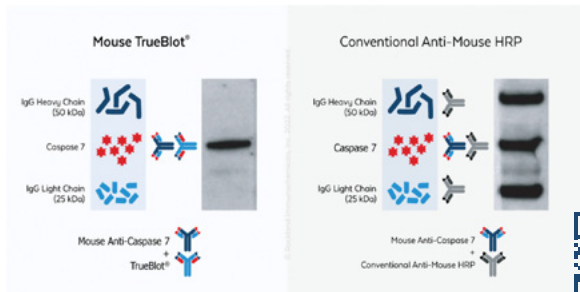
Supporting Reagents

Product	Size	Application	Catalog #
Blocking Buffer for Fluorescent WB	500 mL	WB	MB-070
BLOTTO Immunoanalytical Grade (Non-Fat Dry Milk)	500 g	ELISA, WB, IF	B501-0500
BOVINE SERUM ALBUMIN 30% Solution	500 mL	ELISA, FLISA, WB, IHC, IF	BSA-30
BOVINE SERUM ALBUMIN- Fraction V (Immunoglobulin and Protease Free)	50 g	ELISA, FLISA, WB, IHC, IF, FC	BSA-50
Chemiluminescent FemtoMax™ Super Sensitive HRP Substrate for Microwell and/or Membrane	110 mL	ELISA, WB	FEMTOMAX-110
Chemiluminescent Western Blot Kit: DYKDDDDK (FLAG®)	1 Kit	WB	KCA383
ELISA Microwell Coating Stabilizer (Azide and Mercury Free)	1000 mL	ELISA	MB-063-1000
Molecular Biology Grade UltraPure Water	1 L		MB-010-1000
Normal Mouse Serum	10 mL	ELISA, WB	B308
Opal Prestained Protein Standard 10-180kDa	μL		MB-209-0500
10X PBS pH 7.2	1 L	ELISA, WB	MB-008
10X SDS-PAGE Running Gel Buffer	1 L		MB-017
10X TTBS pH 7.5	1 L	ELISA, WB	MB-013
SEPHAROSE™ PROTEIN A	5 mL		PA50-00-0005

Product	Size	Application	Catalog #
STREPTAVIDIN	5 mg	ELISA, WB, IP, GS, ChIP, Other	S000-01
TMB ELISA PEROXIDASE SUBSTRATE	100 mL	ELISA	TMBE-100
Revitablot™ WB Stripping Buffer	500 mL	WB	MB-085-0500
UltraPure Sterile Water	1 L		MB-009-1000

TrueBlot® Products – Over 400 References!

Immunoprecipitation and Western blotting often suffer from non-specific binding, high background, and heavy/light chain interference. TrueBlot® combats these common experimental issues by providing increased specificity, low background, and enhanced accuracy to provide publication-quality IP Western blots without interference from contaminating IgG.








Learn more at rockland.com/trueblot



Distribution

Country	Distributor
 Australia	Jomar Life Research
 Austria	Biomol GmbH
 Belgium	tebu-bio
 Brazil	Sellex, Inc.
 Canada	Cedarlane
 Chile	Gene X-Press
 China	Dakewe Biotech Multiscience (Lianke) Biotech Shanghai Universal Biotech Co.
 Denmark	BioNordika Denmark A/S
 Finland	Nuppulinnan laboratoriapalvelu Oy
 France	tebu-bio SAS
 Germany	Biomol GmbH Biotrend Chemikalien GmbH
 Hong Kong	Dakewe Biotech Hong Kong Lab-a-porter Ltd
 India	Biogenix Medsystems Pvt. Ltd Biotech Desk Pvt. Ltd. Labmate (Asia) Pvt. Ltd.
 Israel	Enco Scientific Services, Ltd.
 Italy	Clinisciences tebu-bio s.r.l.

Country	Distributor
 Japan	Cosmo Bio Funakoshi
 Malaysia	Essen-Haus Sdn. Bhd.
 Morocco	HexaBiogen
 Netherlands	tebu-bio BV
 New Zealand	Jomar Life Research
 Norway	BioNordika Norway AS
 Poland	Biomol GmbH
 Portugal	Quimigen LDA tebu-bio
 Singapore	SciMed (Asia) Pte. Ltd.
 Spain	Quimigen tebu-bio
 South Africa	Biocom
 South Korea	Bio-Medical Science
 Sweden	BioNordika Sweden AB
 Switzerland	BioConcept
 Taiwan	Unimed Healthcare
 Tunisia	HexaBiogen
 UK	2B Scientific Ltd Cambridge Bioscience Lorne Laboratories tebu-bio



+1 484.791.3823
P.O. Box 5199
Limerick, PA 19468, USA
sales@rockland.com
rockland.com

